

	Fiche machine n°	<h1>Etuyeuse</h1>	FRM-007
	6142		Indice A
	Indice A		Page 1 / 35

Etuyeuse

Fabricant : Romaco Promatic

Modèle : P150

Cadence max : 120 étuis/minute

Pas de distribution de notice

Pas d'embossage

Groupe d'introduction présent

Plage de format :

- A x B x C min : 20 x 15 x 60 mm
- A x B x C max : 100 x 85 x 150 mm

Formats disponible (sous réserve complets) : 58 x 60 x 59 / 58 x 23.5 x 60 / 58 x 33 x 59

Automate : Siemens S7-300

Pièces de rechange et double de formats disponibles

Langues IHM possibles : Français, Italien, Allemand, Espagnol, Anglais

Doc Technique présente en Espagnol / Italien

Puissance installée : 3 kW

Dimensions hors-tout (l x p x h) : 2900 x 1500 x 1500 mm

Poids : 2500 kg

Incoterm : EXW

Cartoner

Manufacturer: Romaco Promatic

Model: P150

Max speed: 120 cartons/minute

Without leaflet feeder

Without embossing

Introduction unit available

Format range:

- *A x B x C min: 20 x 15 x 60 mm*
- *A x B x C max: 100 x 85 x 150 mm*

Formats available (subject to check): 58 x 60 x 59 / 58 x 23.5 x 60 / 58 x 33 x 59

PLC : Siemens S7-300

Spare parts and duplicate of some formats available

Possible HMI languages: French, Italian, German, Spanish, English

Technical documentation: available (in Spanish and Italian)

Installed power: 3 kW

Overall dimensions (l x d x h): 2900 x 1500 x 1500 mm

Weight: 2500 kg

Incoterm: EXW



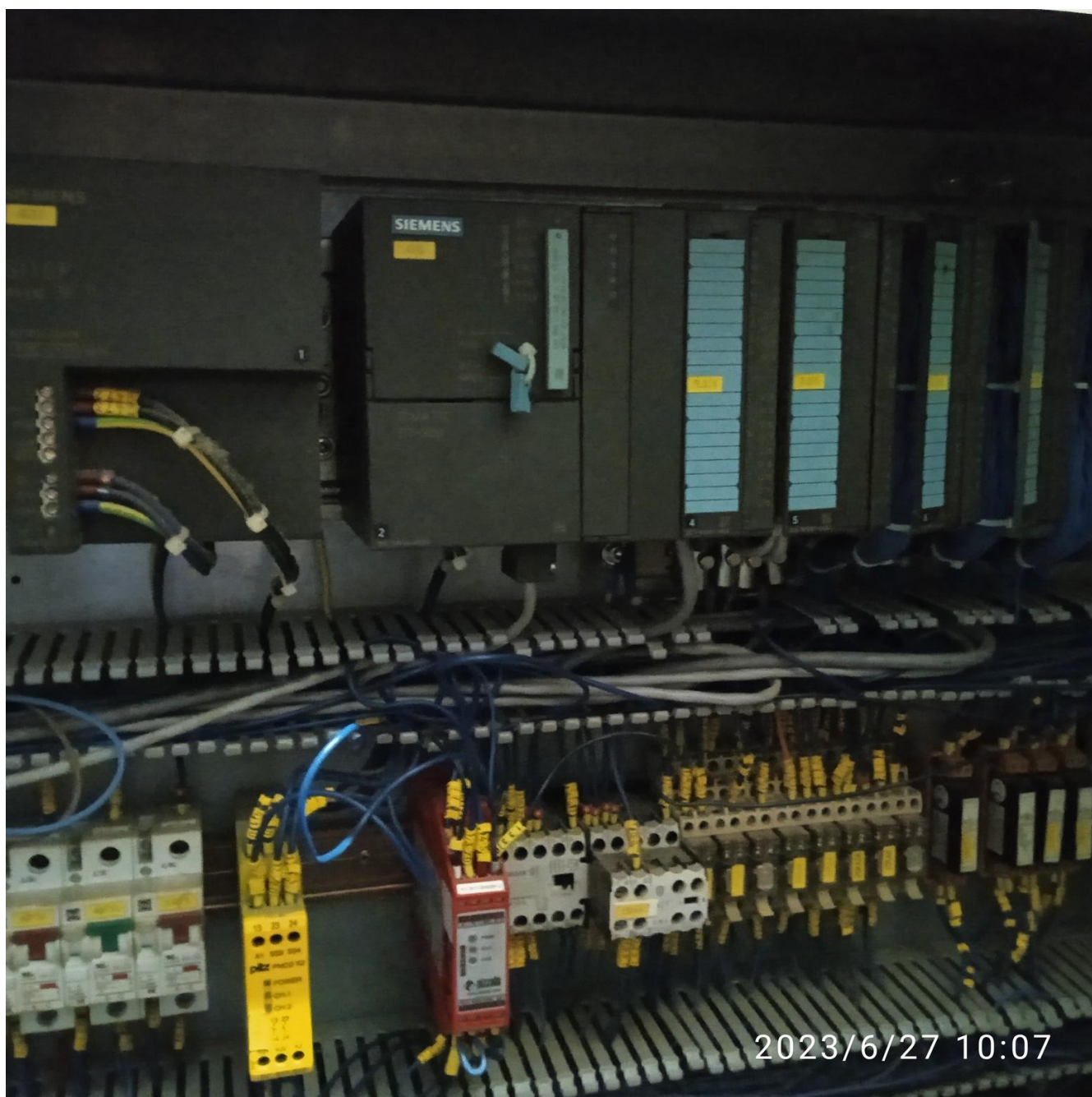


















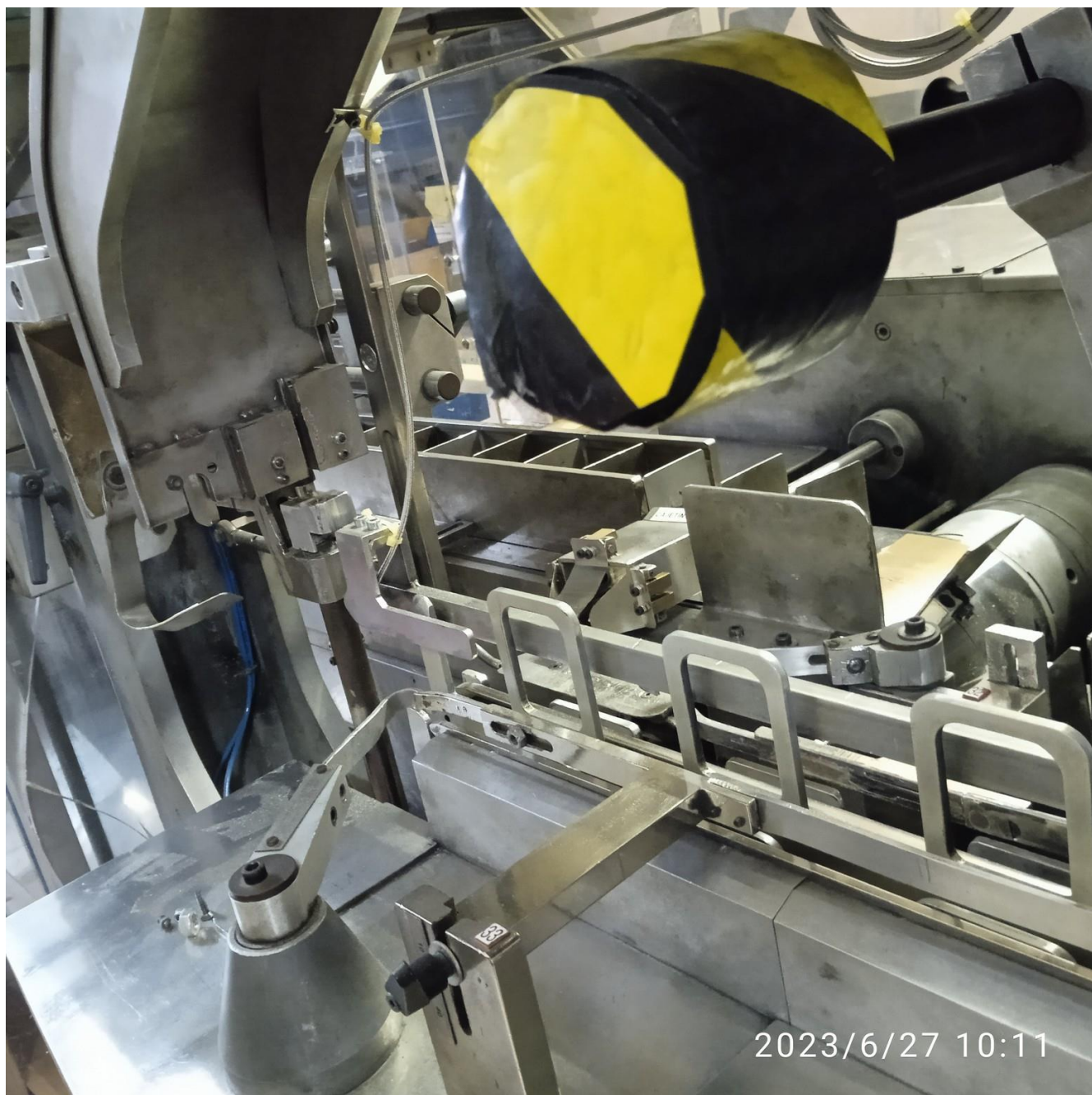


















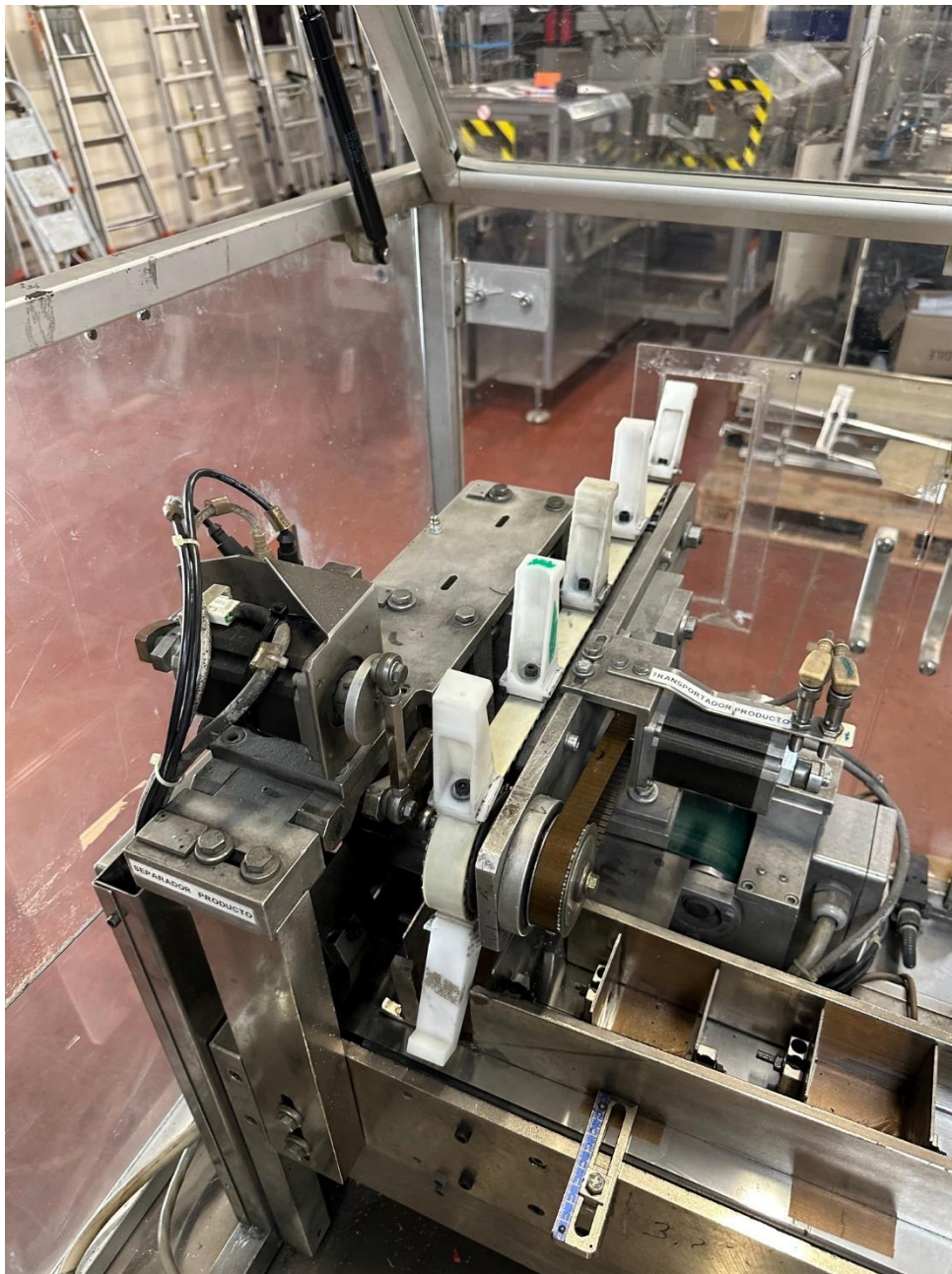




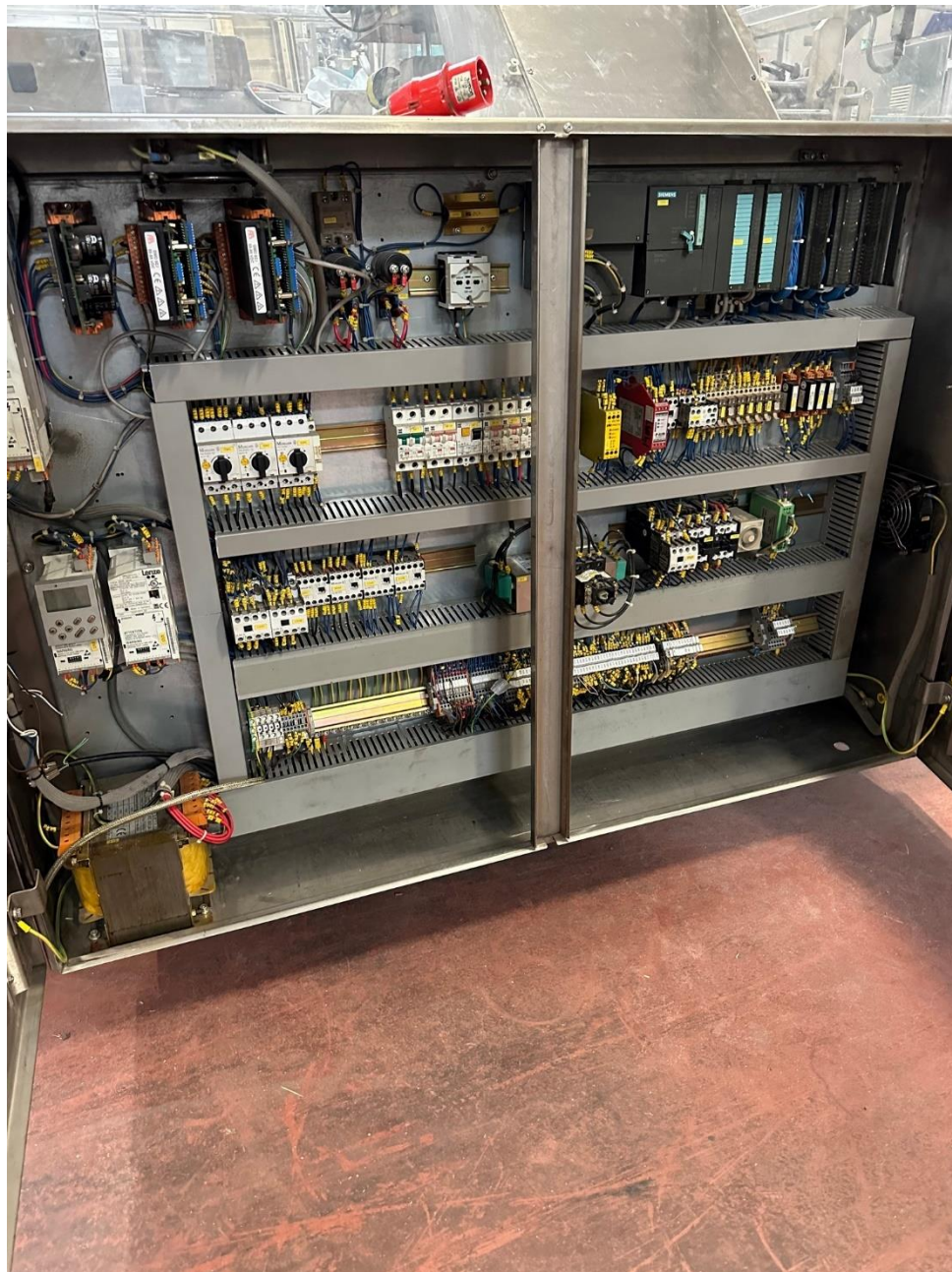


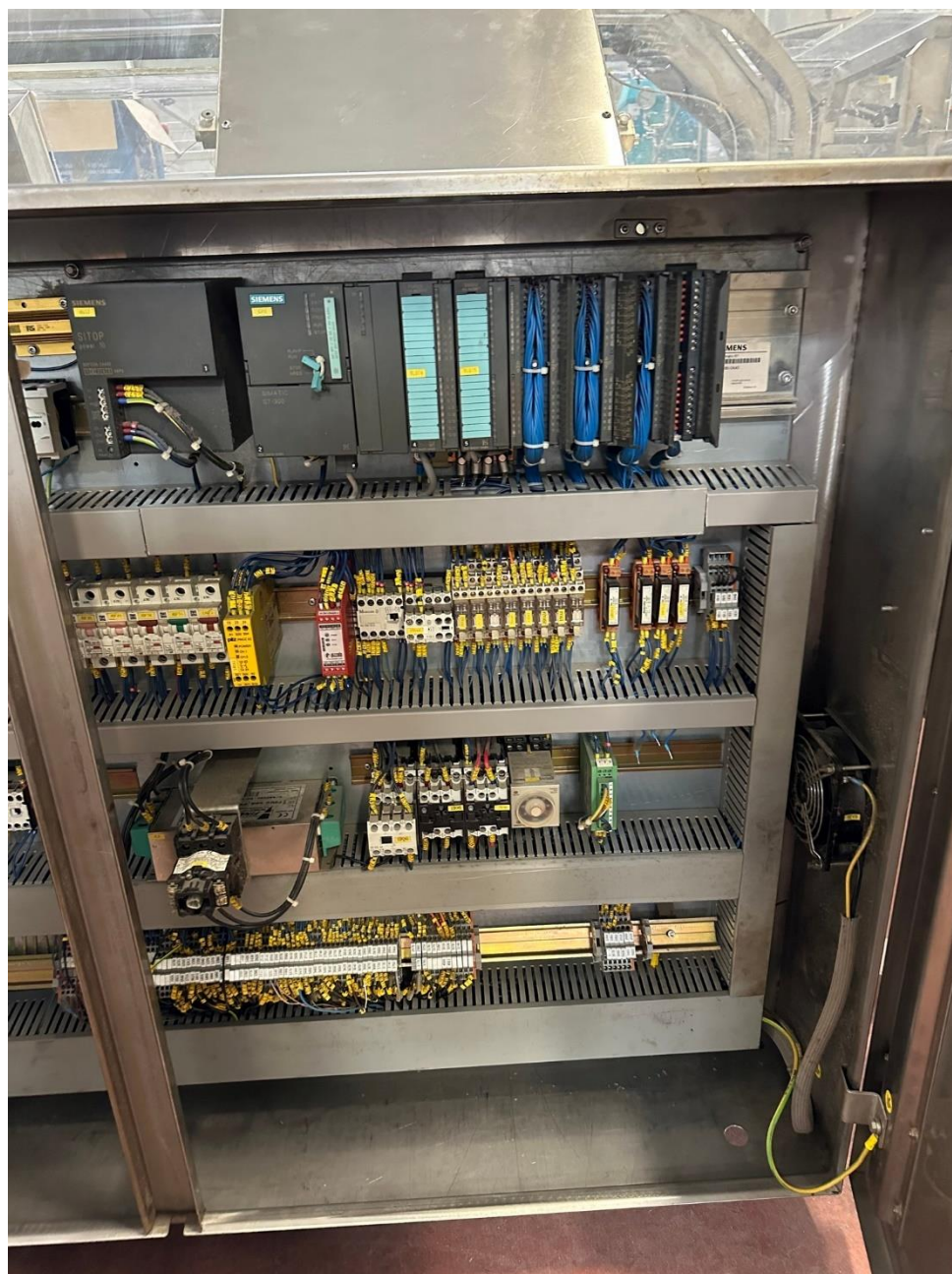






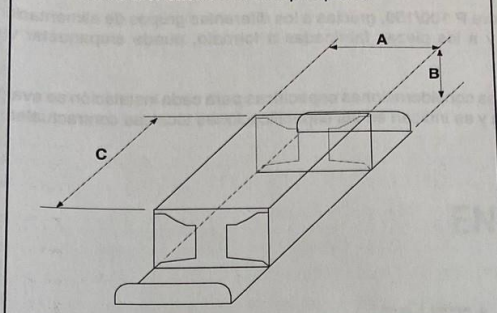






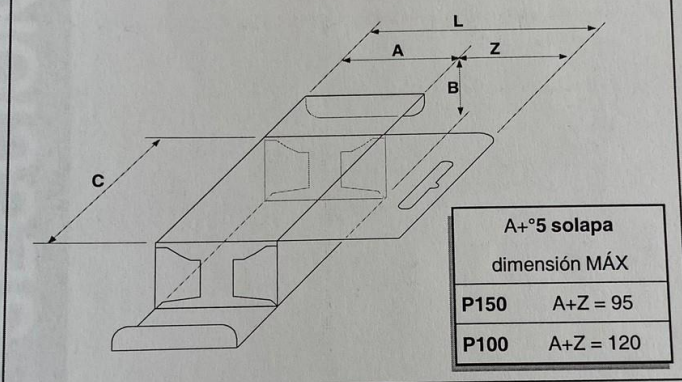


2 — cierre a encastre con solapas pares



3 — cierre a encastre con solapas alternas + 5° solapa

4 — cierre a encastre con solapas pares + 5° solapa



5 — cierre solapas con cola en caliente

