	Fiche machine n°	<h1>Remplisseuse-boucheuse</h1>	FRM-007
	6116		Indice A
	Indice A		Page 1 / 34

Remplisseuse-boucheuse

Fabricant : Rota

Modèle : FLR 50/S-P/85

Dimensions hors-tout (l x p x h) : approx. 1500 x 1400 x 1900 mm

1 station de remplissage

Format présent : flacon 3 ml diamètre 18 mm bouchon avec pipette (détails dans fichier joint)

Documentation technique : schéma électrique

Table tournante Rota zu 85, année 2013

Dimensions hors-tout table (l x p x h) : 1300 x 950 x 1200 mm

Diamètre table : 830 mm

Bol vibrant : Maschinen-und Apparatebau Automation, type VSZ 650 U

Dimensions hors-tout bol (l x p x h) : 700 x 700 x 1100 mm

Diamètre bol : 630 mm

Incoterm : EXW

Filler-capper

Manufacturer: Rota

Model: FLR 50/S-P/85

Overall dimensions (l x d x h): approx. 1500 x 1400 x 1900 mm

1 filling station

Installed format: 3 ml vial, diameter 18 mm, cap with pipette (details in the attached file)

Technical documentation: electrical diagram

Turning table: Rota zu 85, year 2013

Table's overall dimensions (l x d x h): 1300 x 950 x 1200 mm

Table's diameter: 830 mm

Vibrating bowl: Maschinen-und Apparatebau Automation, type VSZ 650 U

Bowl's overall dimensions (l x d x h): 700 x 700 x 1100 mm

Bowl's diameter: 630 mm

Incoterm: EXW





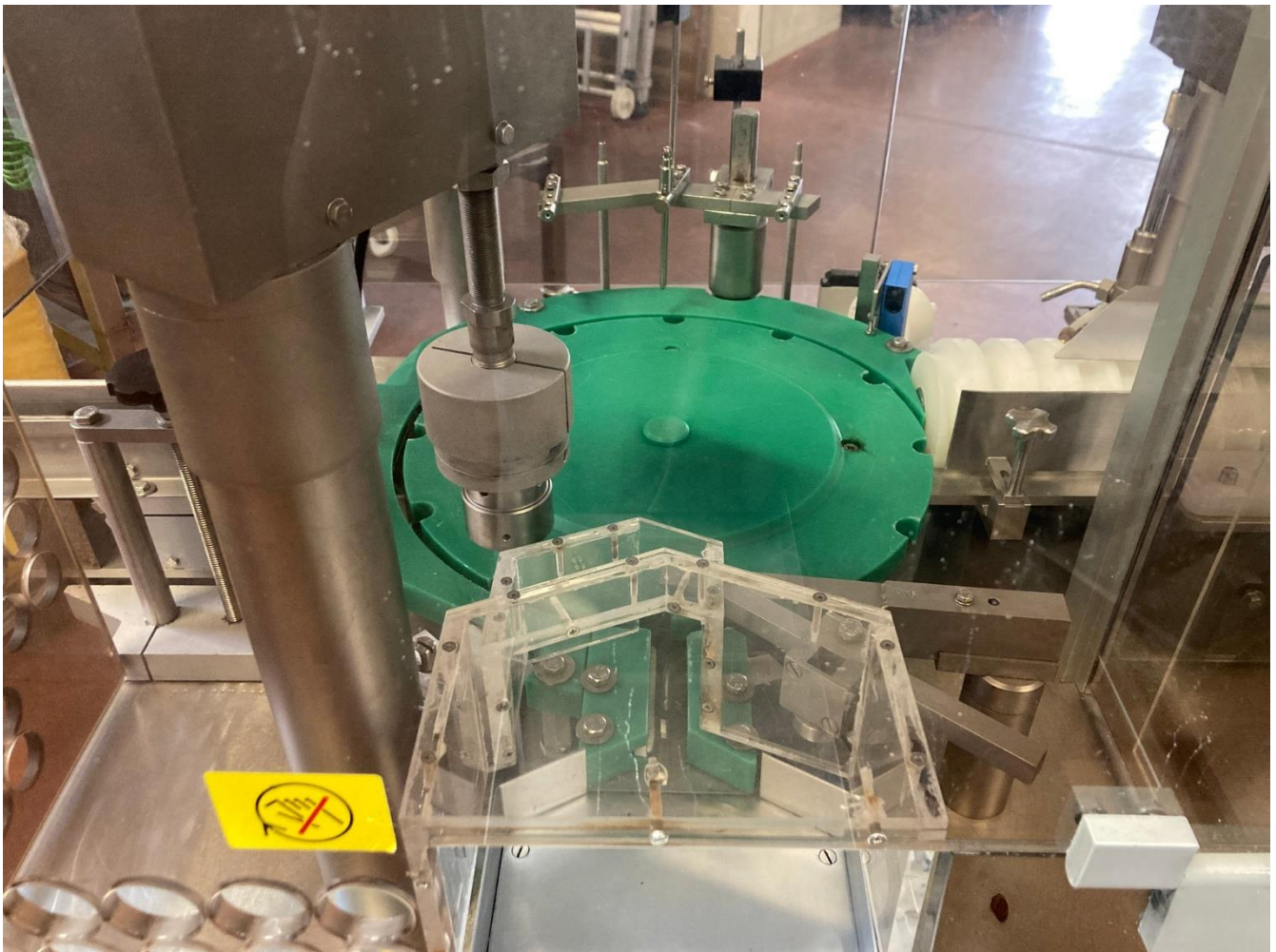




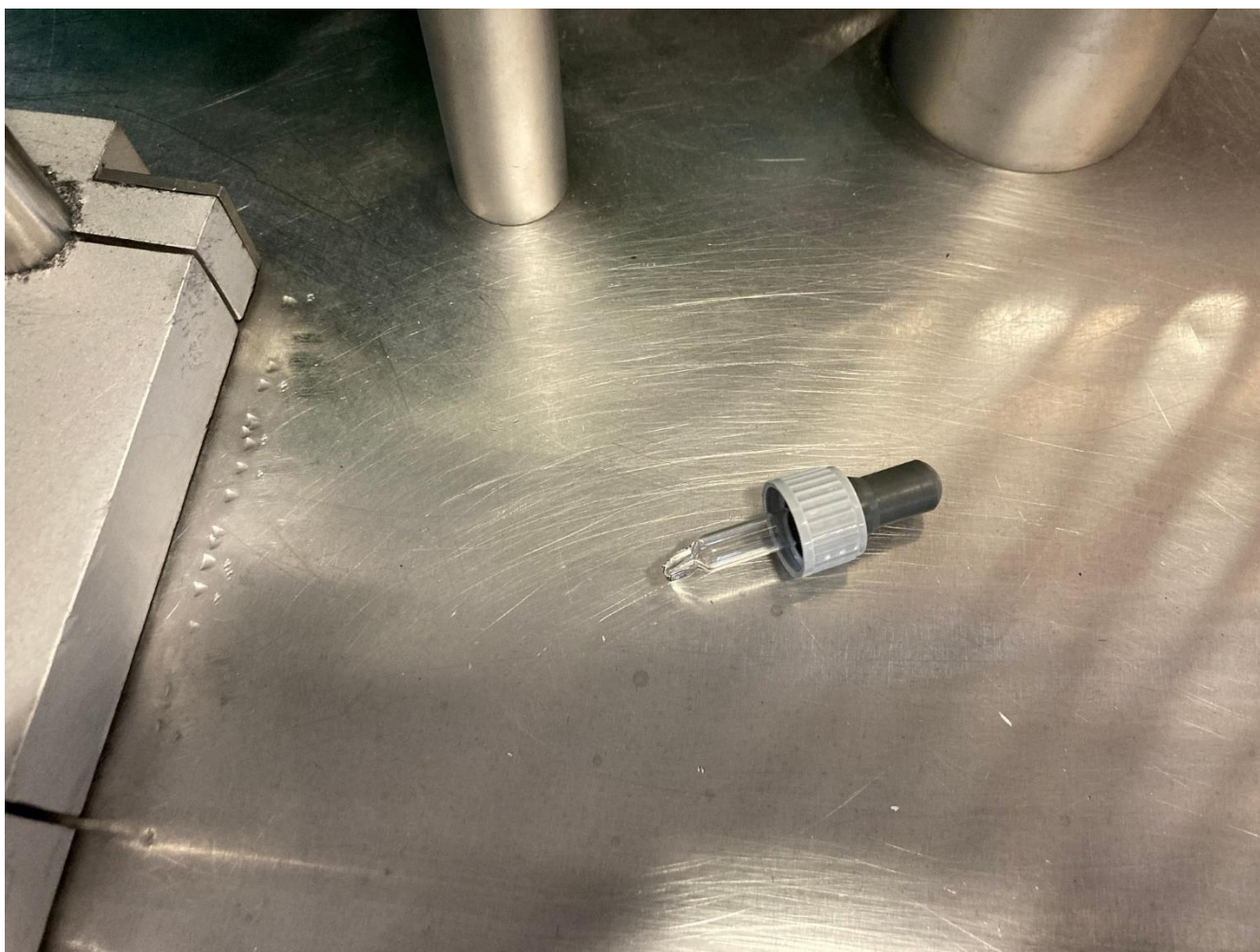




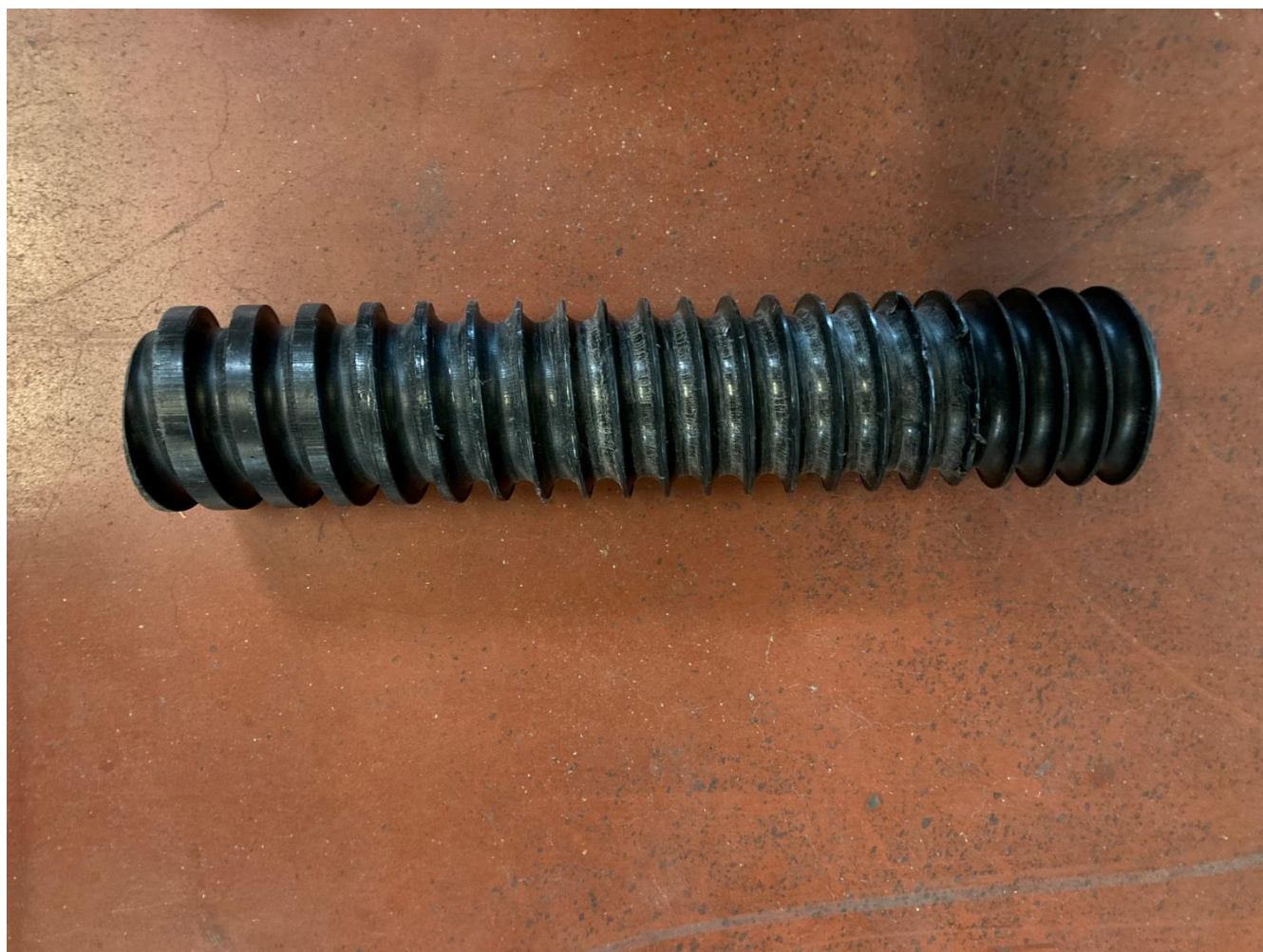




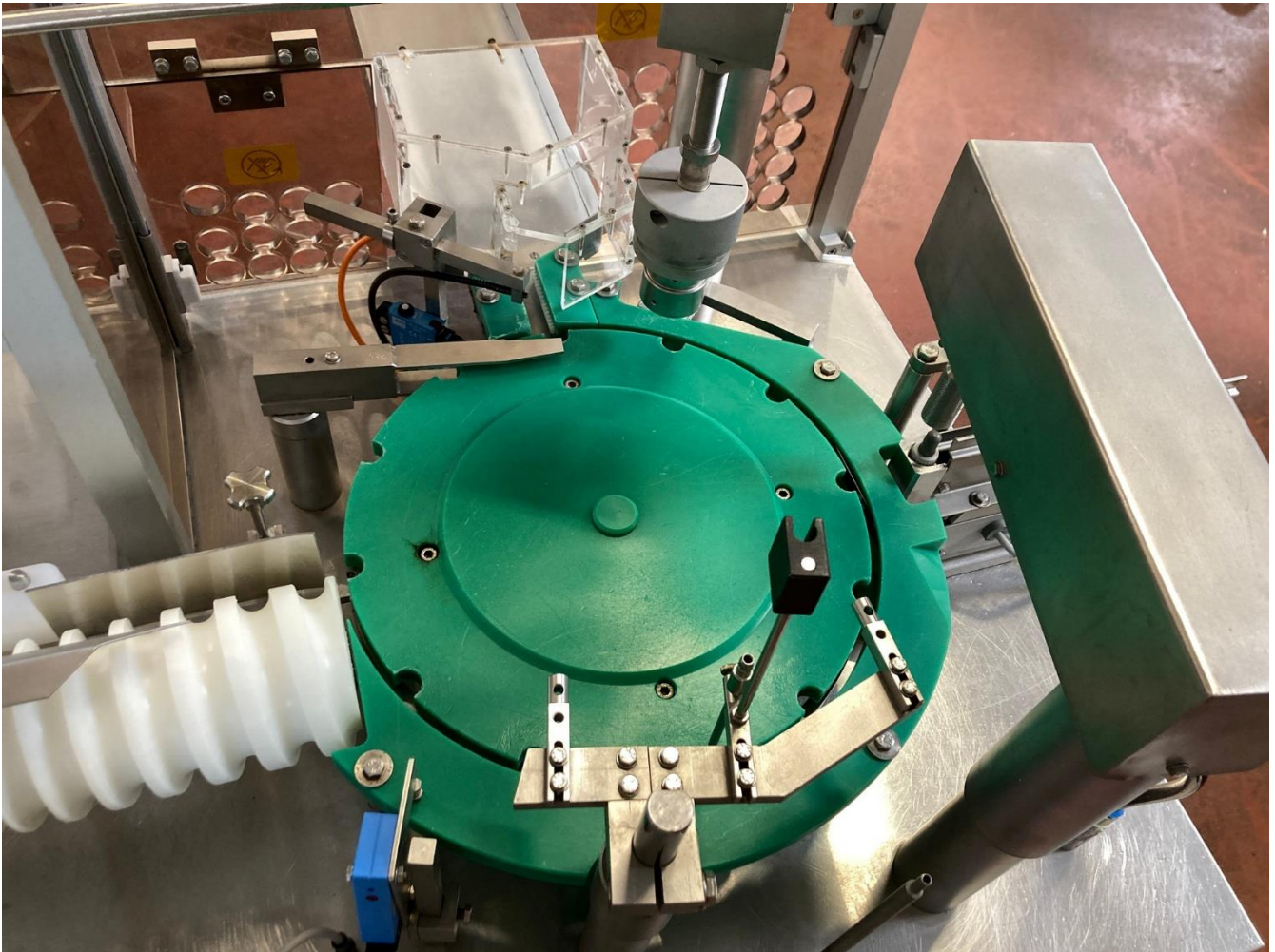


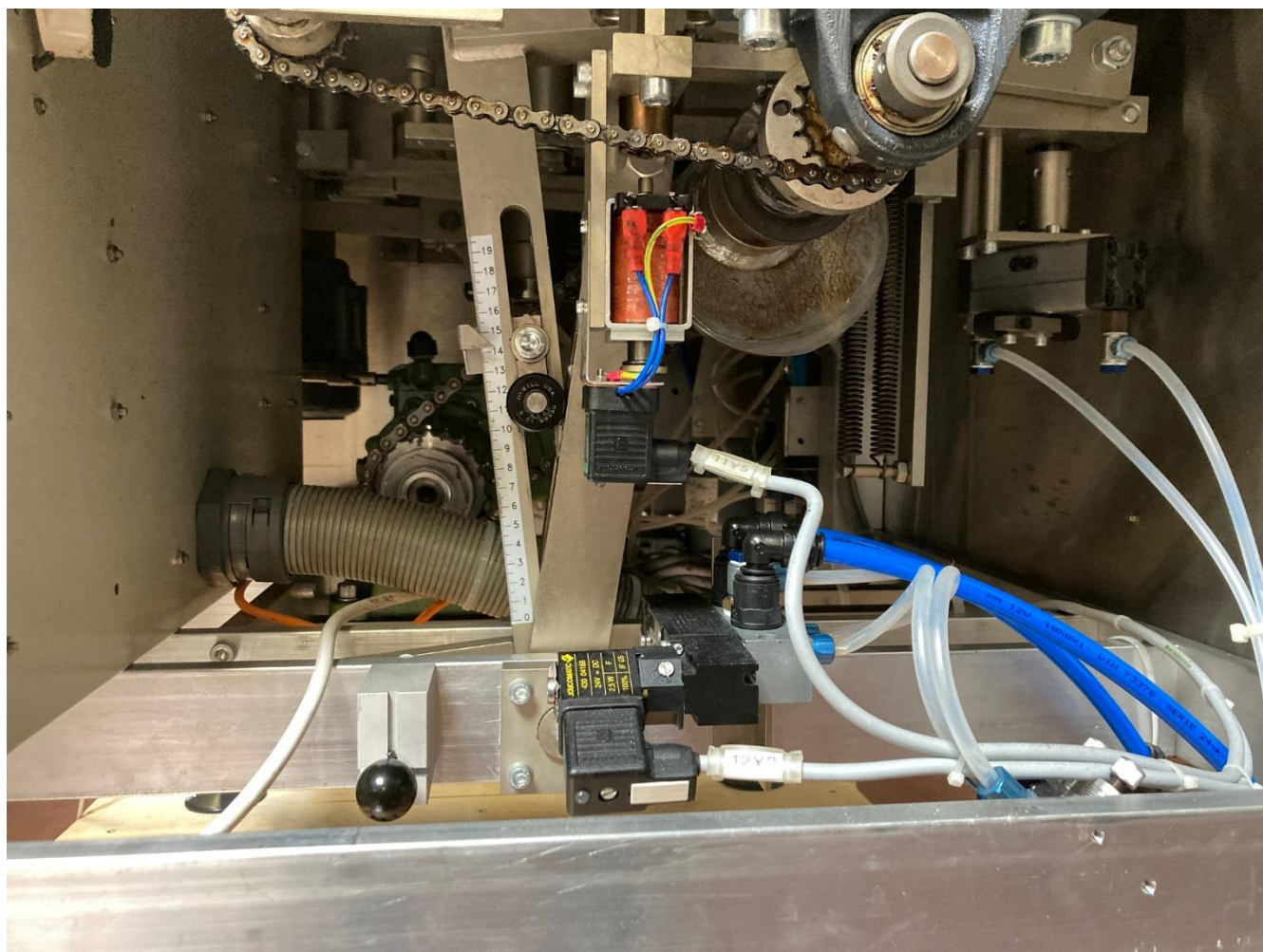


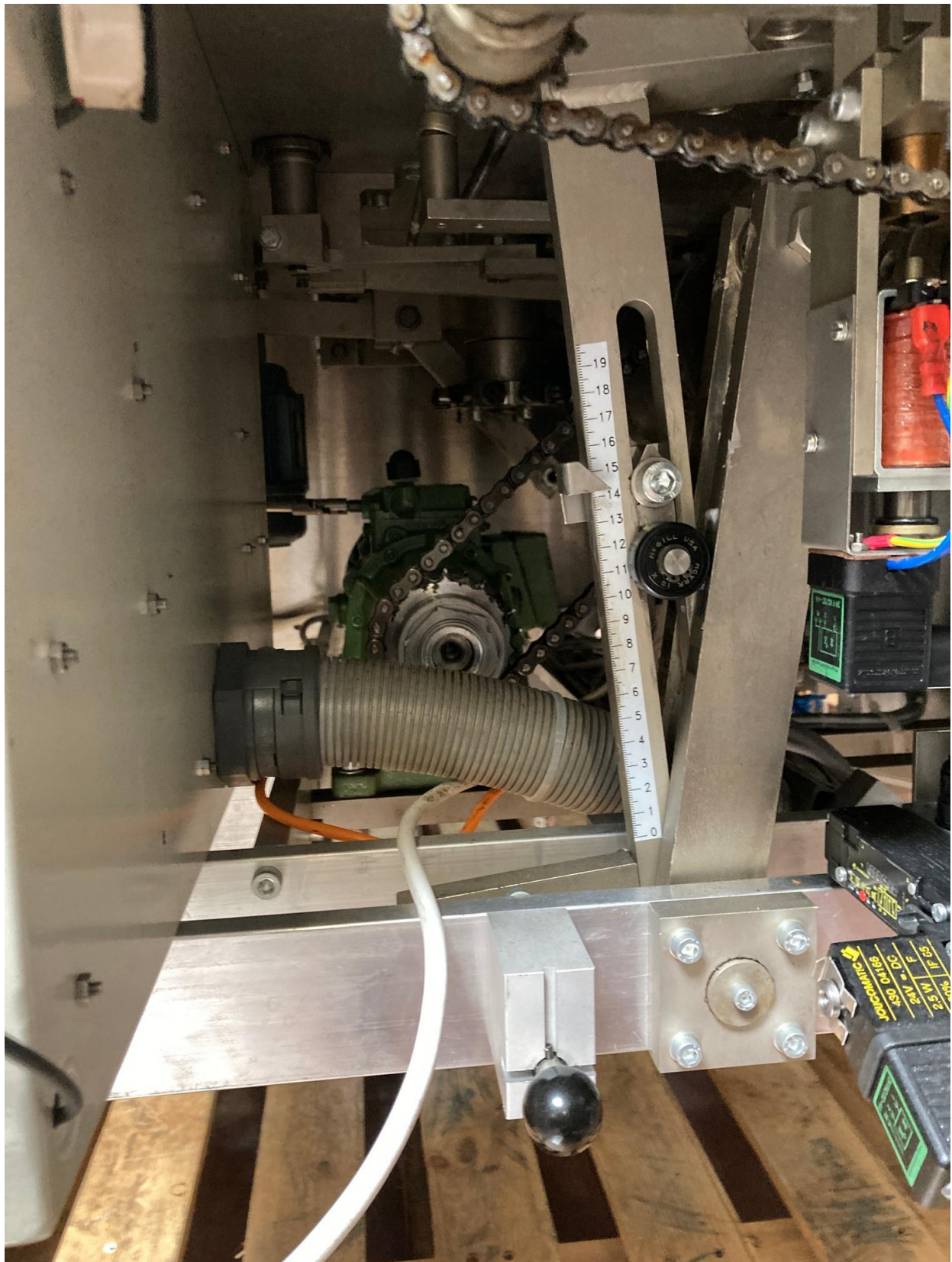


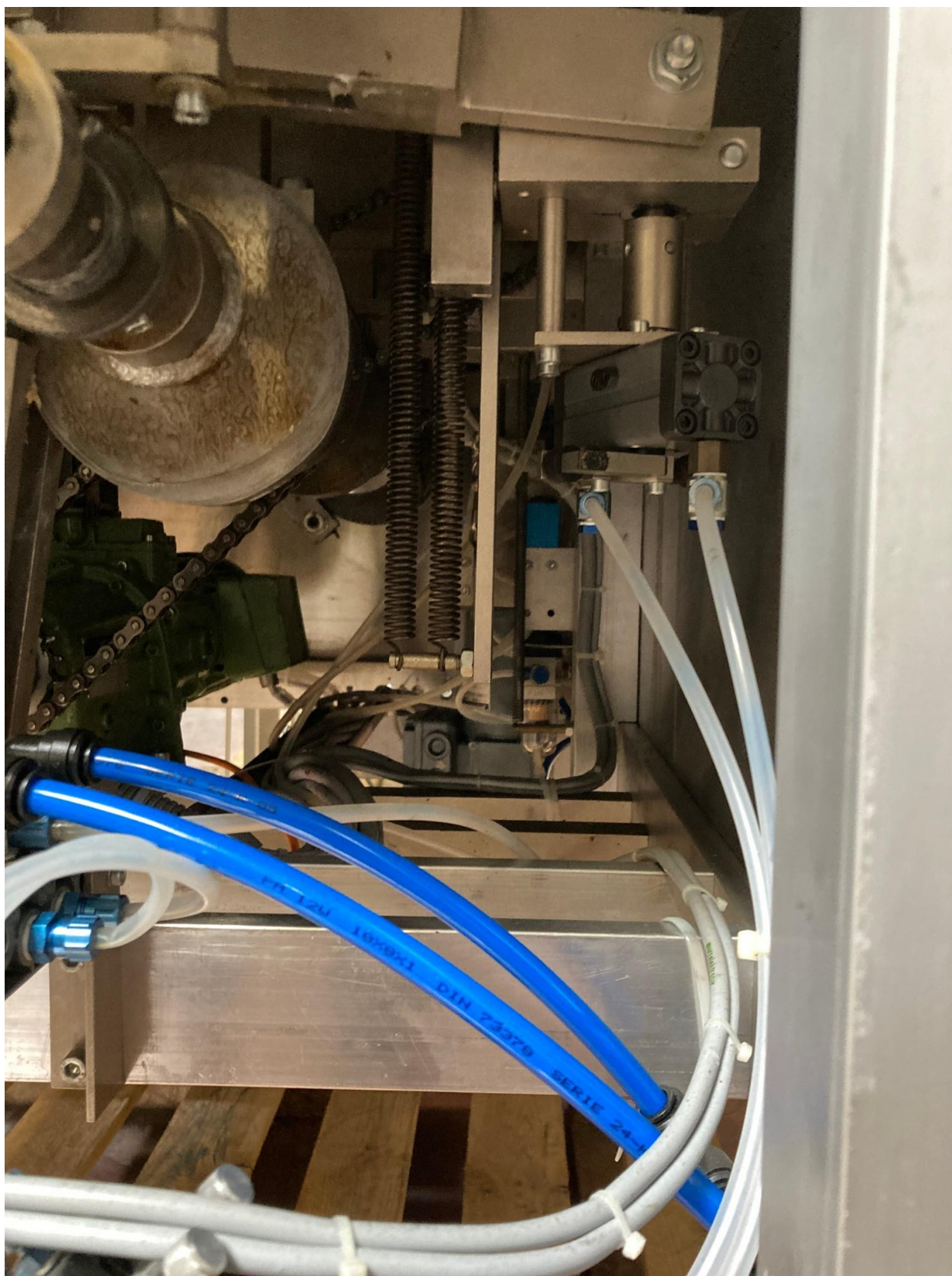


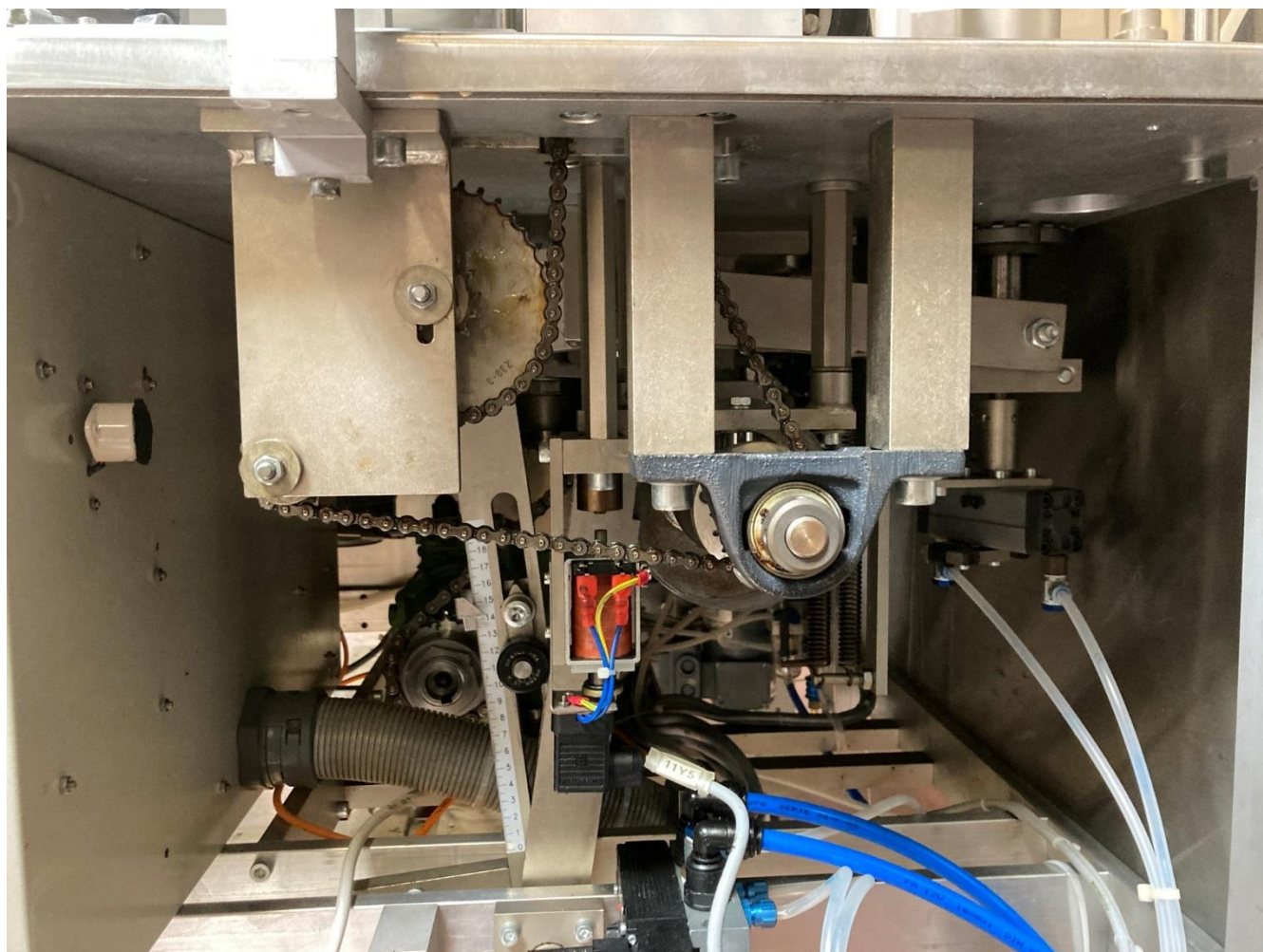




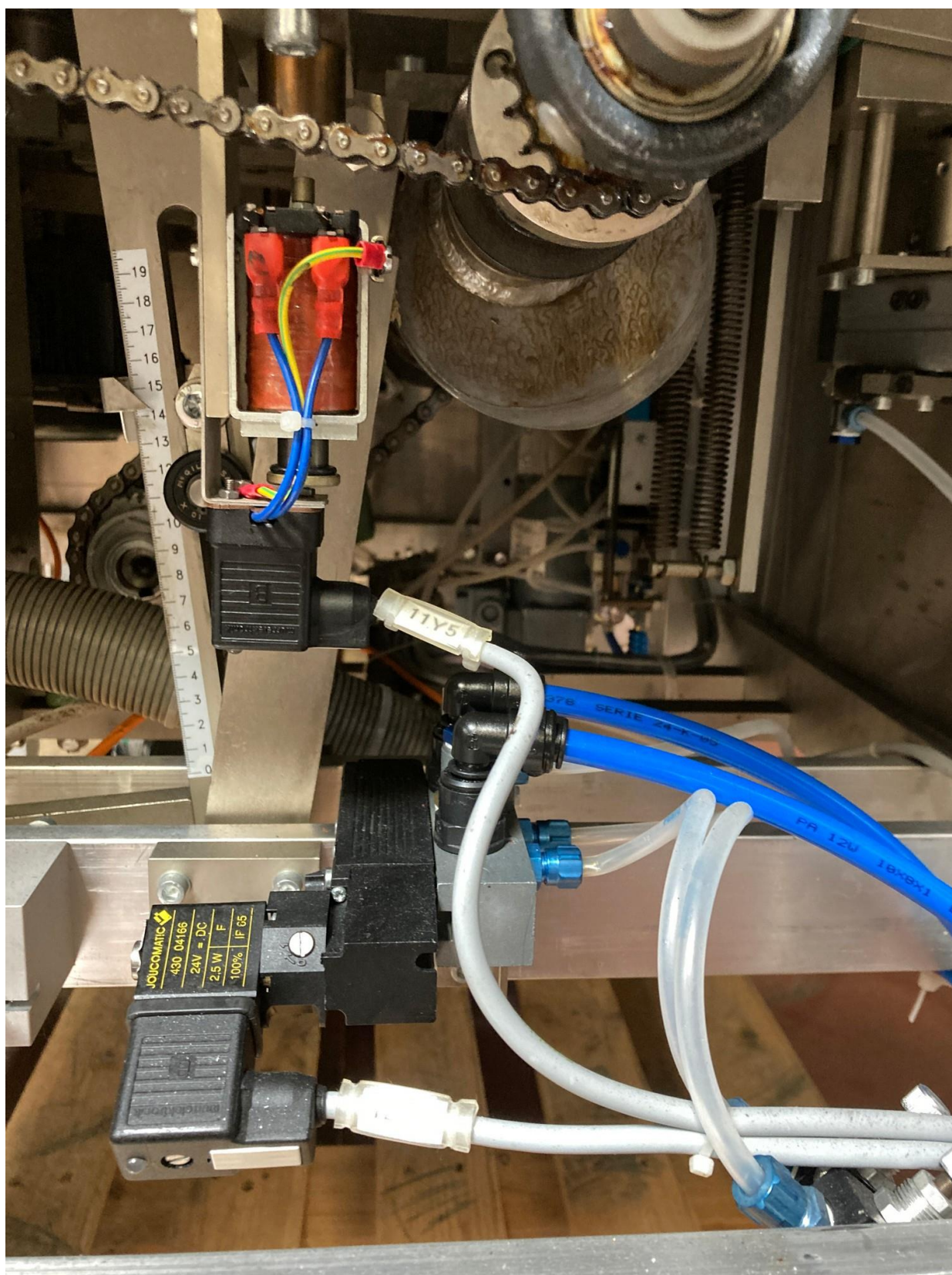


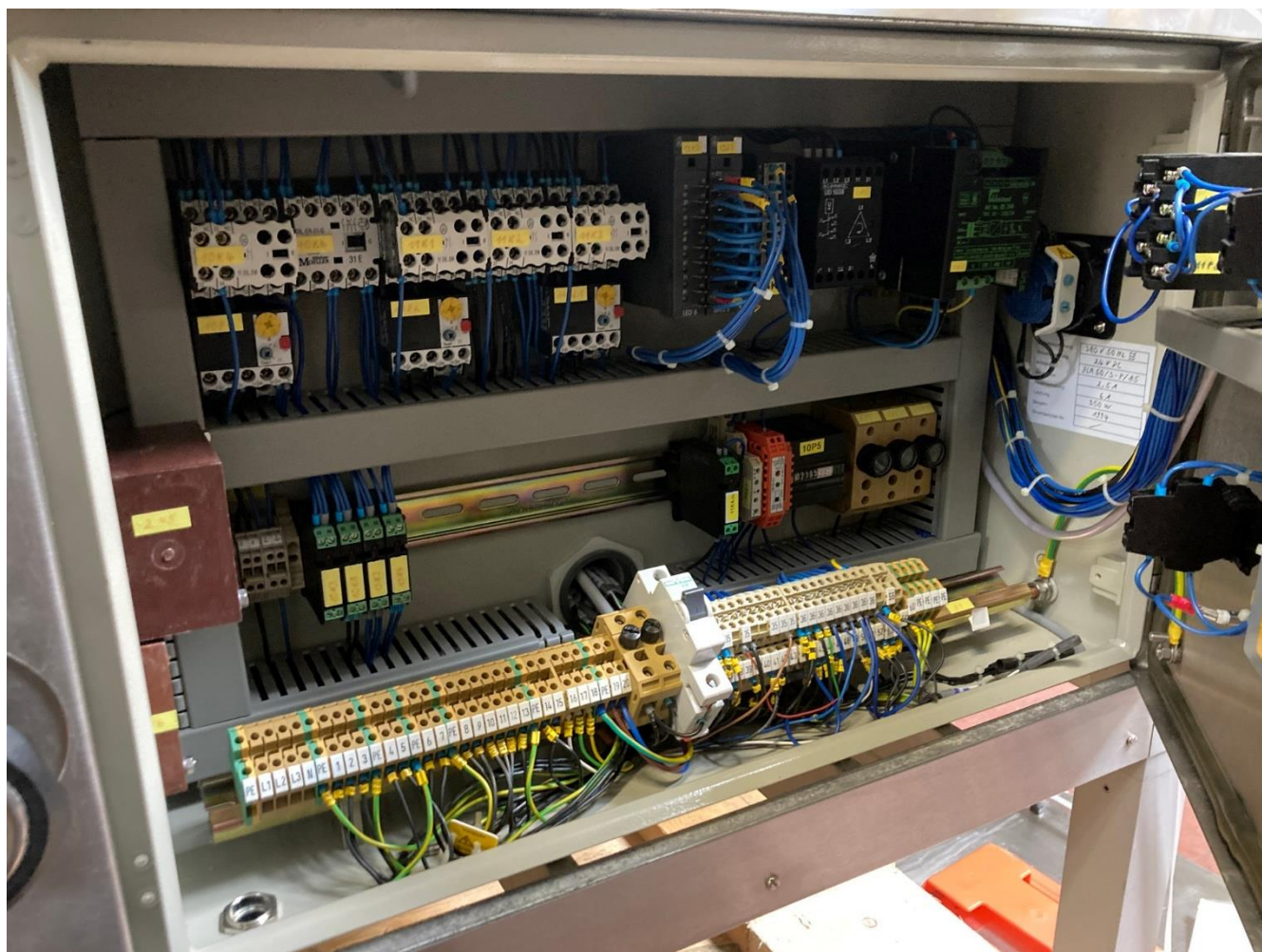


















Ingenneo
used equipment

Fiche machine n°

6116

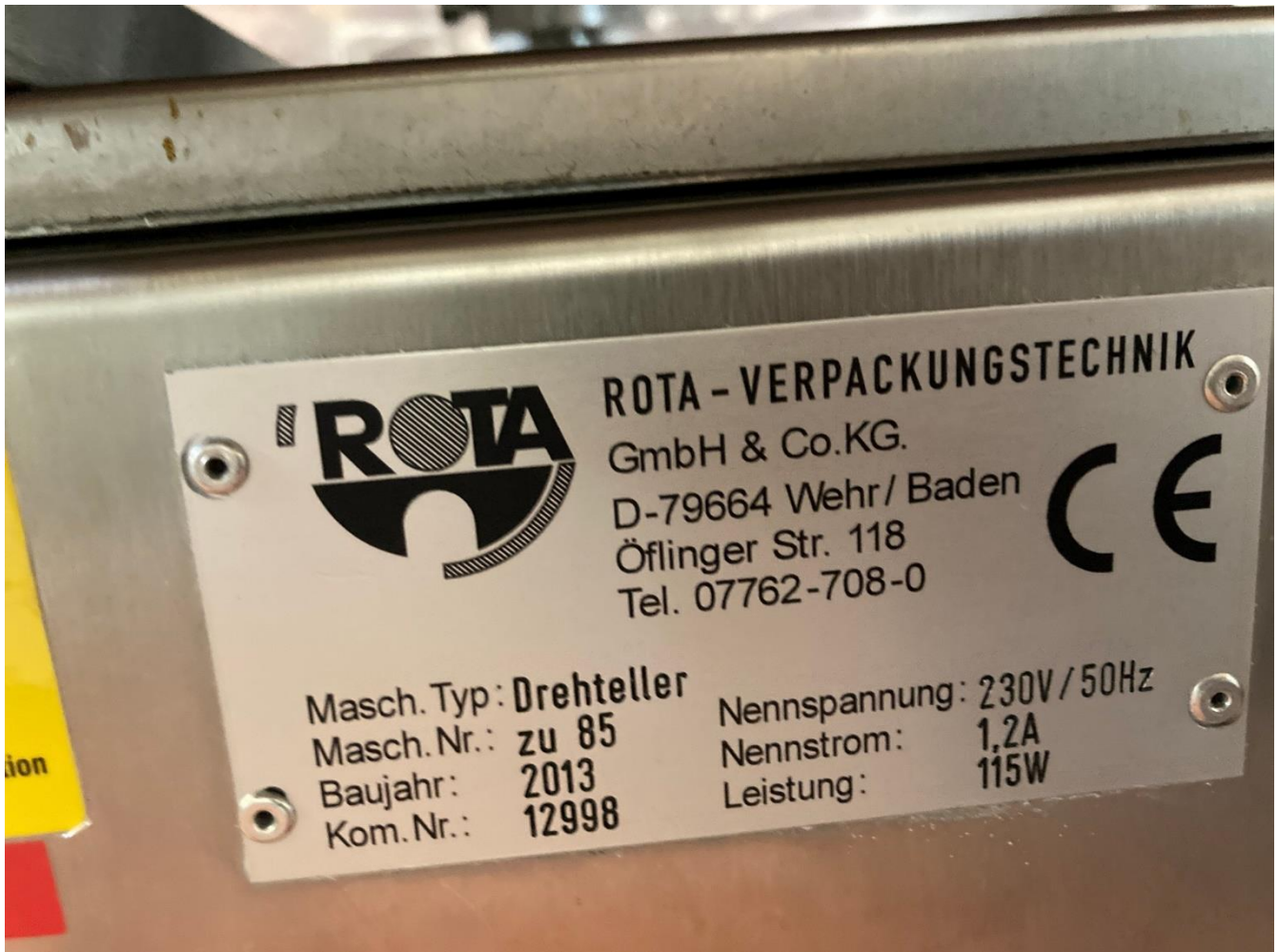
Indice A

Remplisseuse-boucheuse

FRM-007

Indice A

Page 25 /
34





















Ingenneo
used equipment

Fiche machine n°

6116

Indice A

Remplisseuse-boucheuse

FRM-007

Indice A

Page 34 /
34

