

Trieuse pondérale

Fabricant : Garvens

Modèle : XS2

Année : 2009

Numéro de série : 34000721

Capacité mini : 5 g

Capacité max : 600 g

Précision $e = d$: 0,1 g

Cadence : 90 CPM

Vitesse max convoyeur : 30 m/min

Documentation technique : disponible, détails sur demande

Dimensions hors-tout (l x p x h) : 1100 x 850 x 1700 mm

Poids : environ 150 kg

Nous consulter pour le transport

Checkweigher

Manufacturer: Garvens

Model: XS2

Year: 2009

Serial number: 34000721

Min weighing: 5 g

Max weighing: 600 g

Accuracy $e = d$: 0,1 g

Speed: 90 CPM

Max conveyor speed: 30 m/min

Technical documentation: available, details on request

Overall dimensions (l x d x h): 1100 x 850 x 1700 mm

Weight: approx. 150 kg

Consult us for shipment



Trieuse pondérale



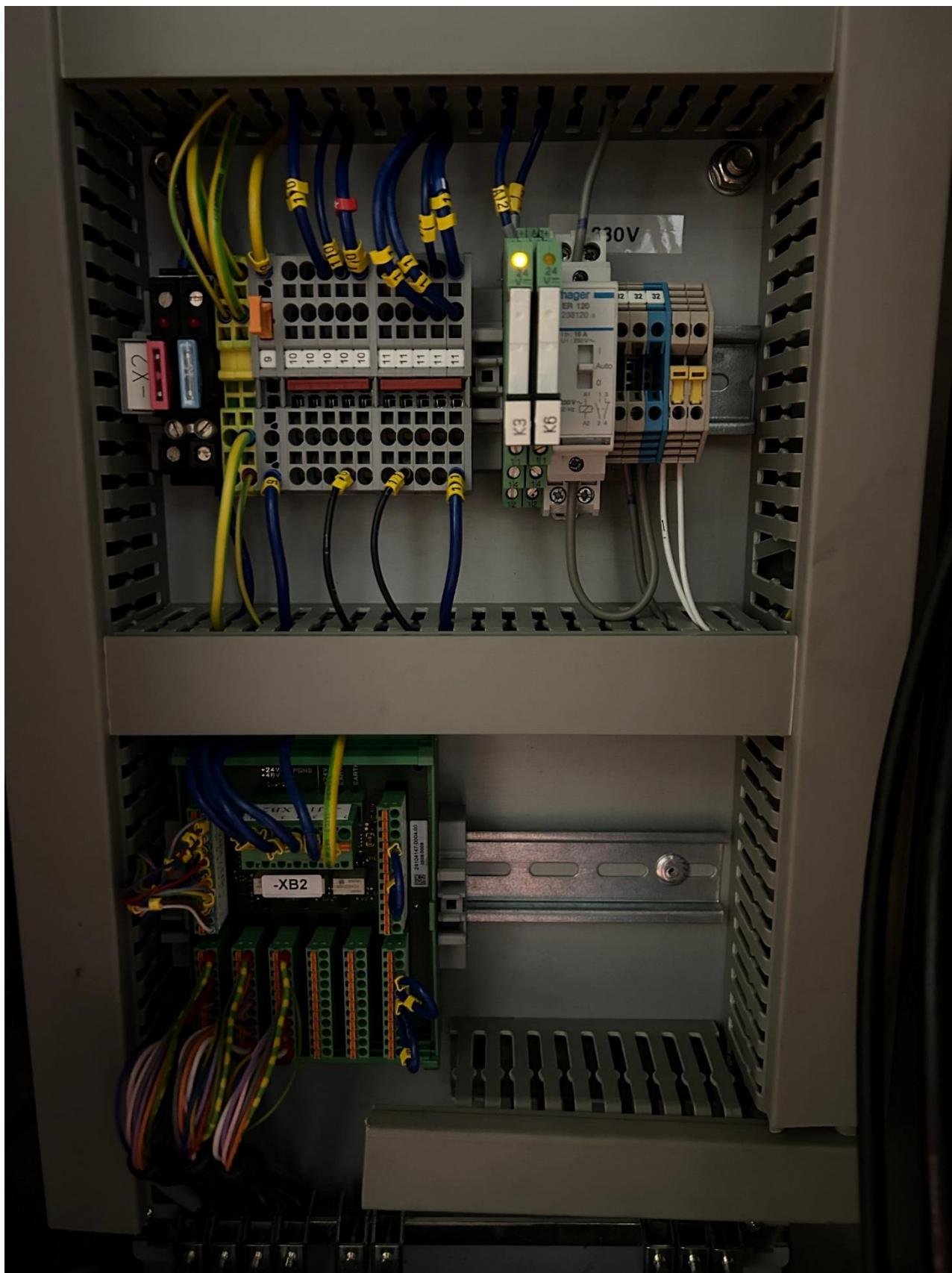
Trieuse pondérale

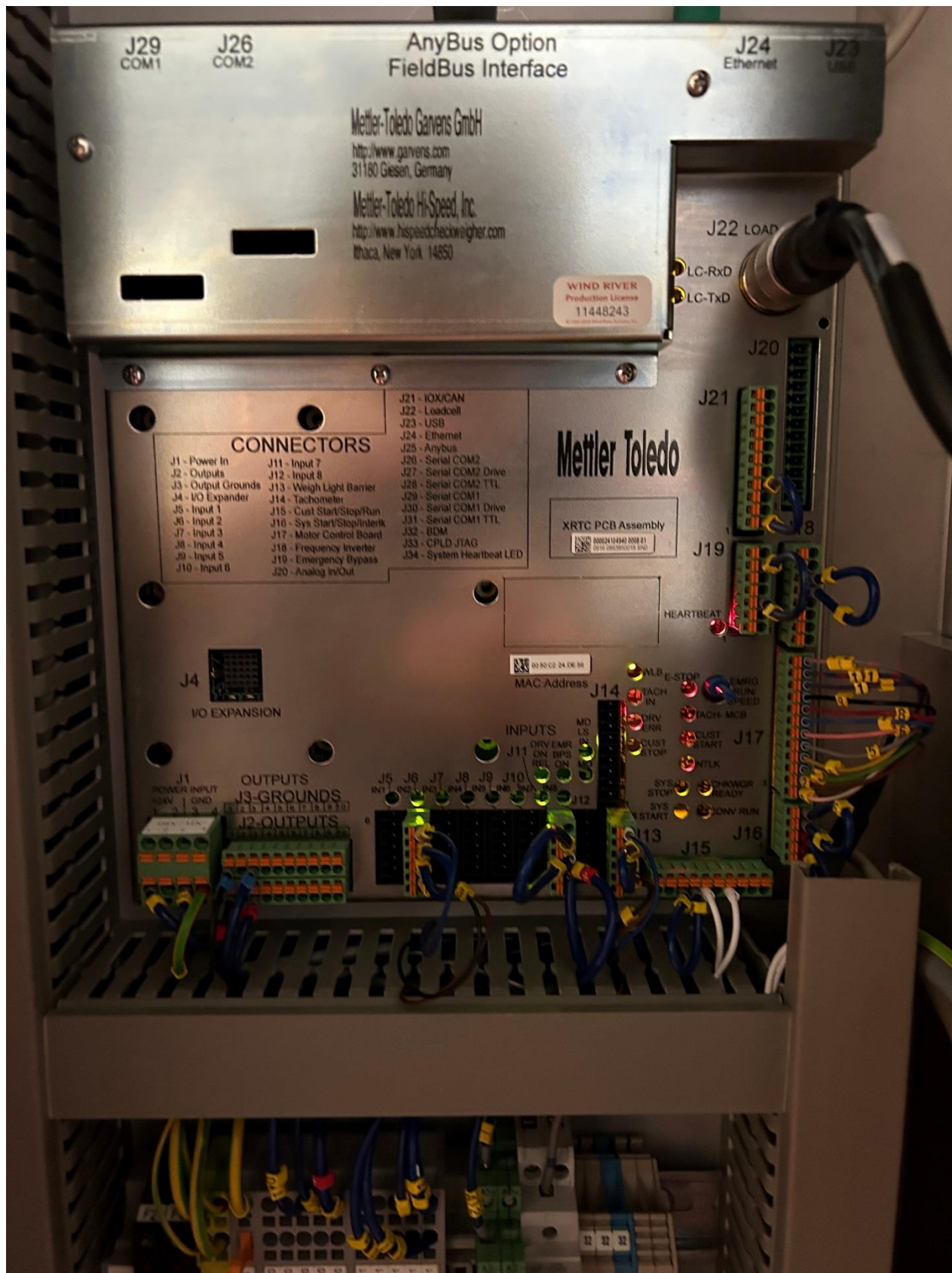


Trieuse pondérale



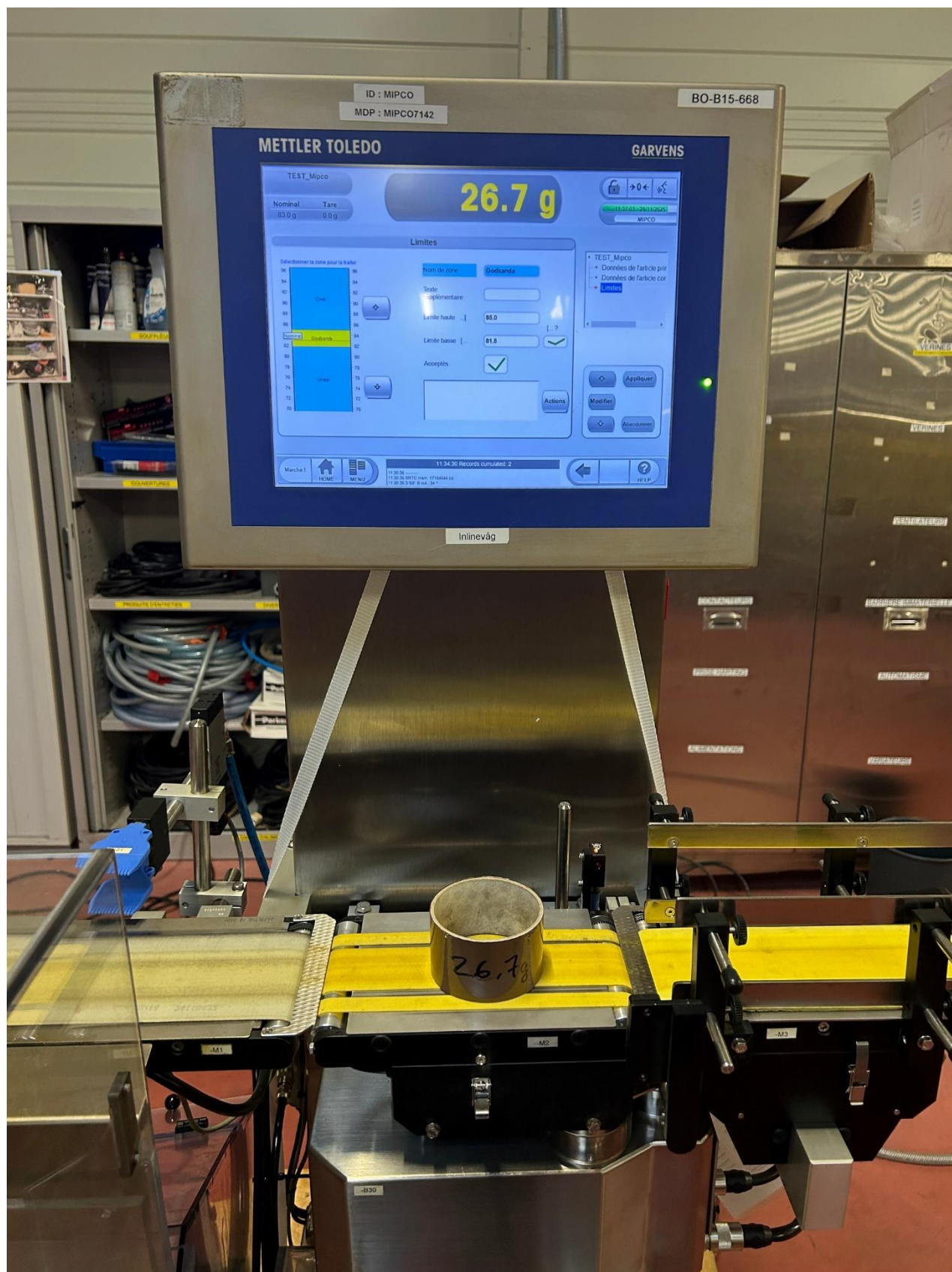
Trieuse pondérale

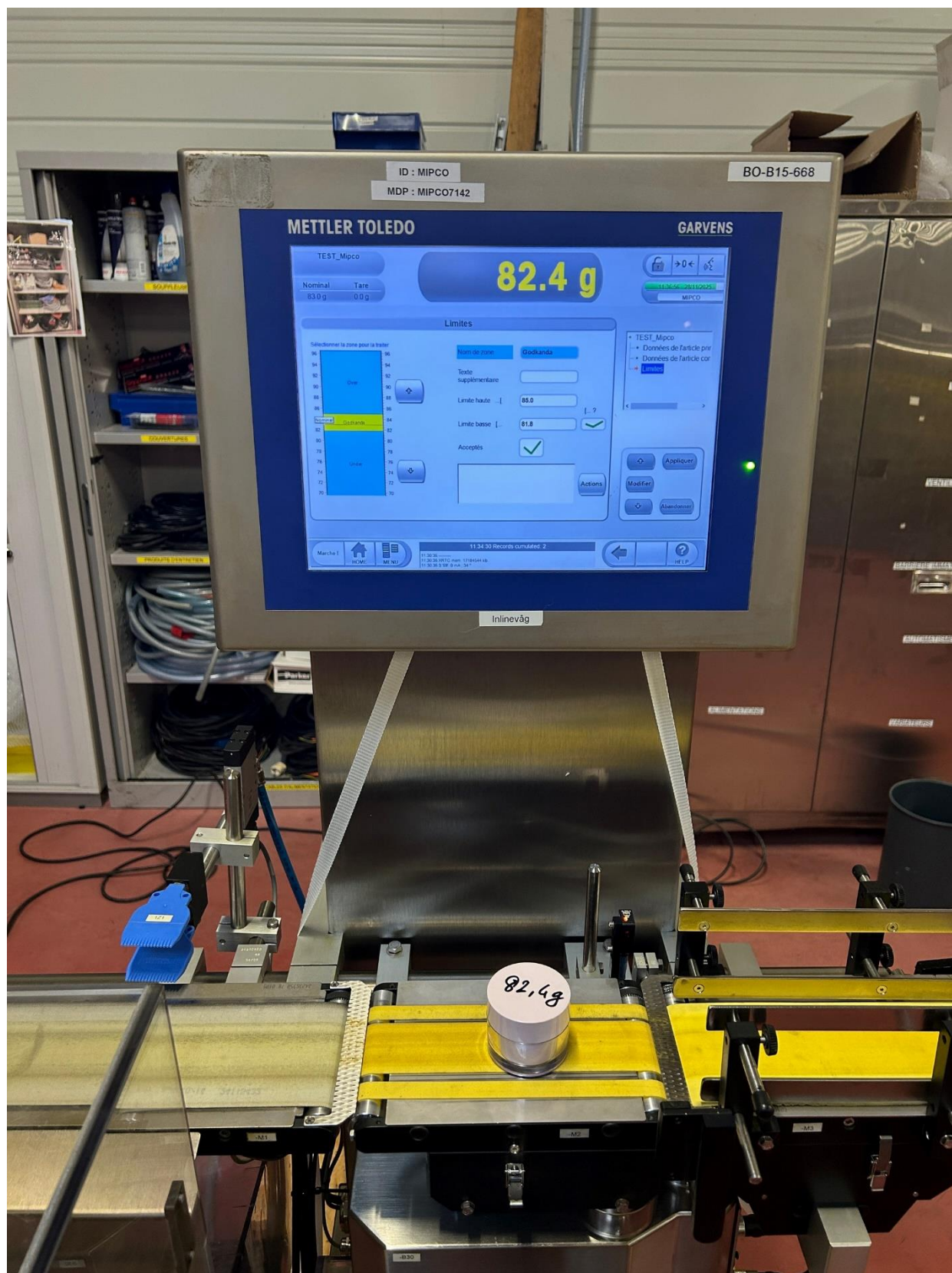












BO-B15-668

1AN2D GR.16



24/7 Help Desk Contact

If you have a service contract for this device, call our hotline for support:

+46 020-25 58 80 (Mon-Fri 7.30am - 4pm)

+46 0200439999 (After business hours)

Model: XS2/C35

METTLER TOLEDO Service

Serial number: 34000721

Mettler-Toledo Garvens GmbH

Kampstrasse 7, 31180 Giesen

Germany

Automatic Weigher

Type **XS 2**

Serial No. **34000721**

Max.: **600** g

Year of manufacture **2009**

Min.: **5** g

Pneumatic pressure: Min. **500** kPa

e = **0,1** g

100 - 240 V~ / 50 - 60 Hz

d = **0,1** g

Temperature range : **0° C to 40° C**

T = + g

T = - **540** g

Max. conveyor speed

30 m/min

Throughput **90** Pcs./min



