

	Fiche machine n°	<h1>Cellophaneuse</h1>	FRM-007
	<b>6580</b>		Indice A
	Indice A		Page 1 / 24

## Cellophaneuse

Fabricant : Bergami

Modèle : CM 40

Année : 2001

Numéro de série : 248

Plage de formats :

- A = min. 60 mm – max. 300 mm
- B = min. 50 mm – max. 150 mm
- C = min. 25 mm – max. 90 mm

Cadence : de 40 à 60 cellophanages/minute

Automate : Omron CQM1H

Alimentation : 380 V / 50 Hz

Puissance installée : 2,5 kW

Poids approx.: 750 kg

Documentation technique : éléments, détails sur demande

Conforme normes CE

Incoterm : FCA

## *Cellophane wrapper*

*Manufacturer: Bergami*

*Model: CM 40*

*Year: 2001*

*Serial number: 248*

*Format range:*

- *A = min. 60 mm – max. 300 mm*
- *B = min. 50 mm – max. 150 mm*
- *C = min. 25 mm – max. 90 mm*

*Speed: 40 to 60 wraps/minute*

*PLC: Omron CQM1H*

*Power supply: 380 V / 50 Hz*

*Installed power: 2,5 kW*

*Approx. weight: 750 kg*

*Technical documentation: elements, details on request*

*EC standards' compliant*

*Incoterm: FCA*

# Cellophaneuse



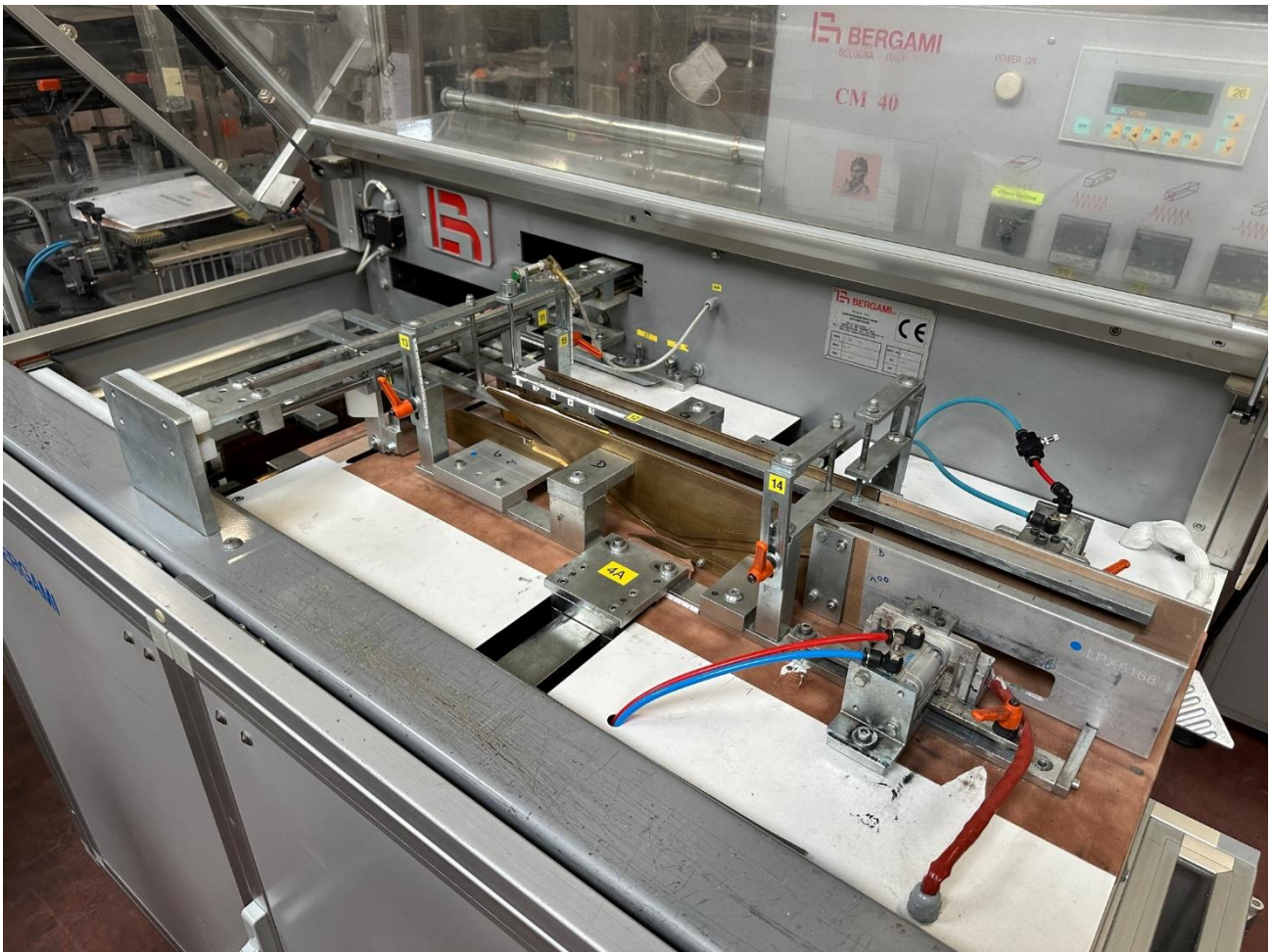




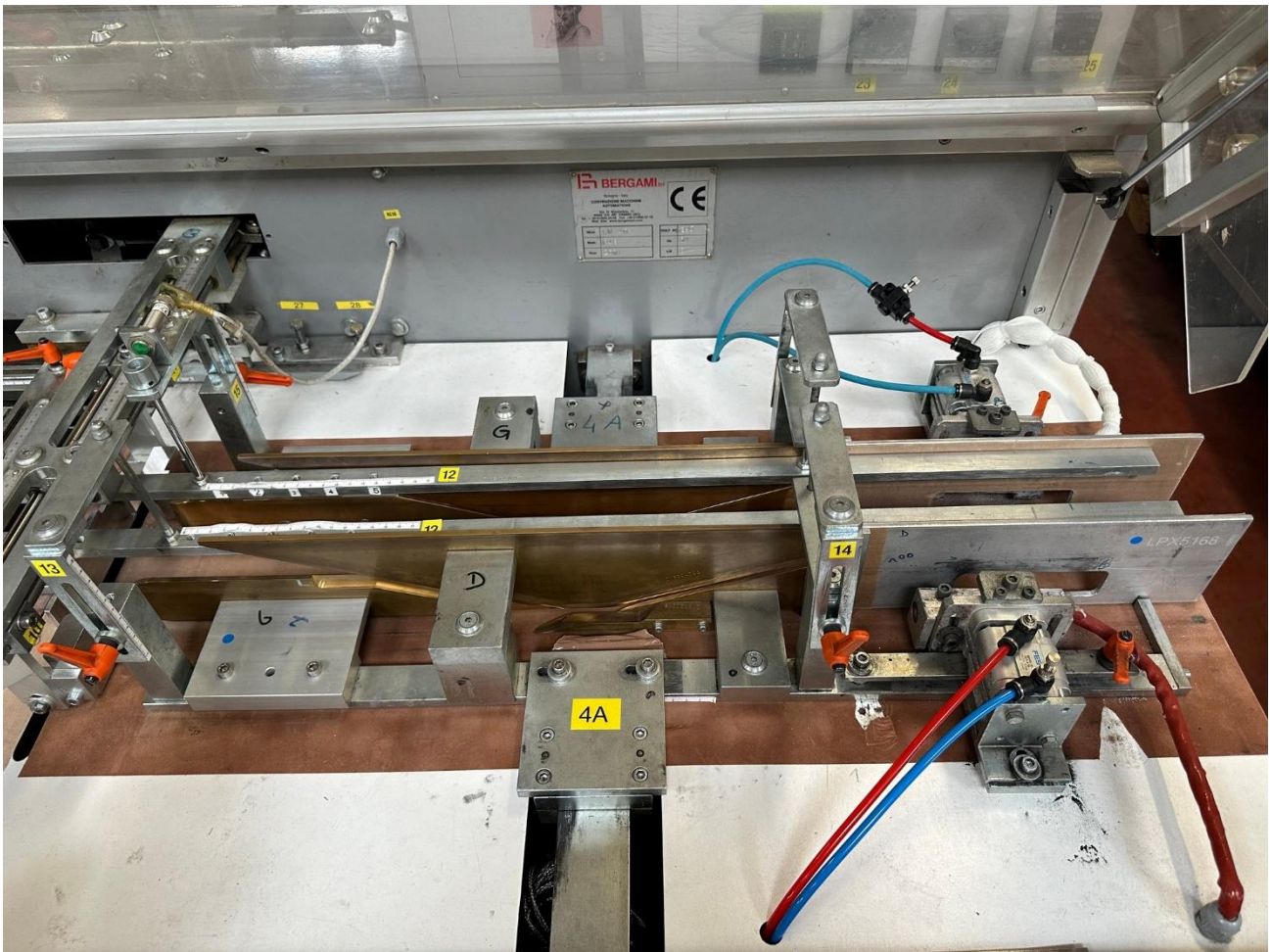
# Cellophaneuse

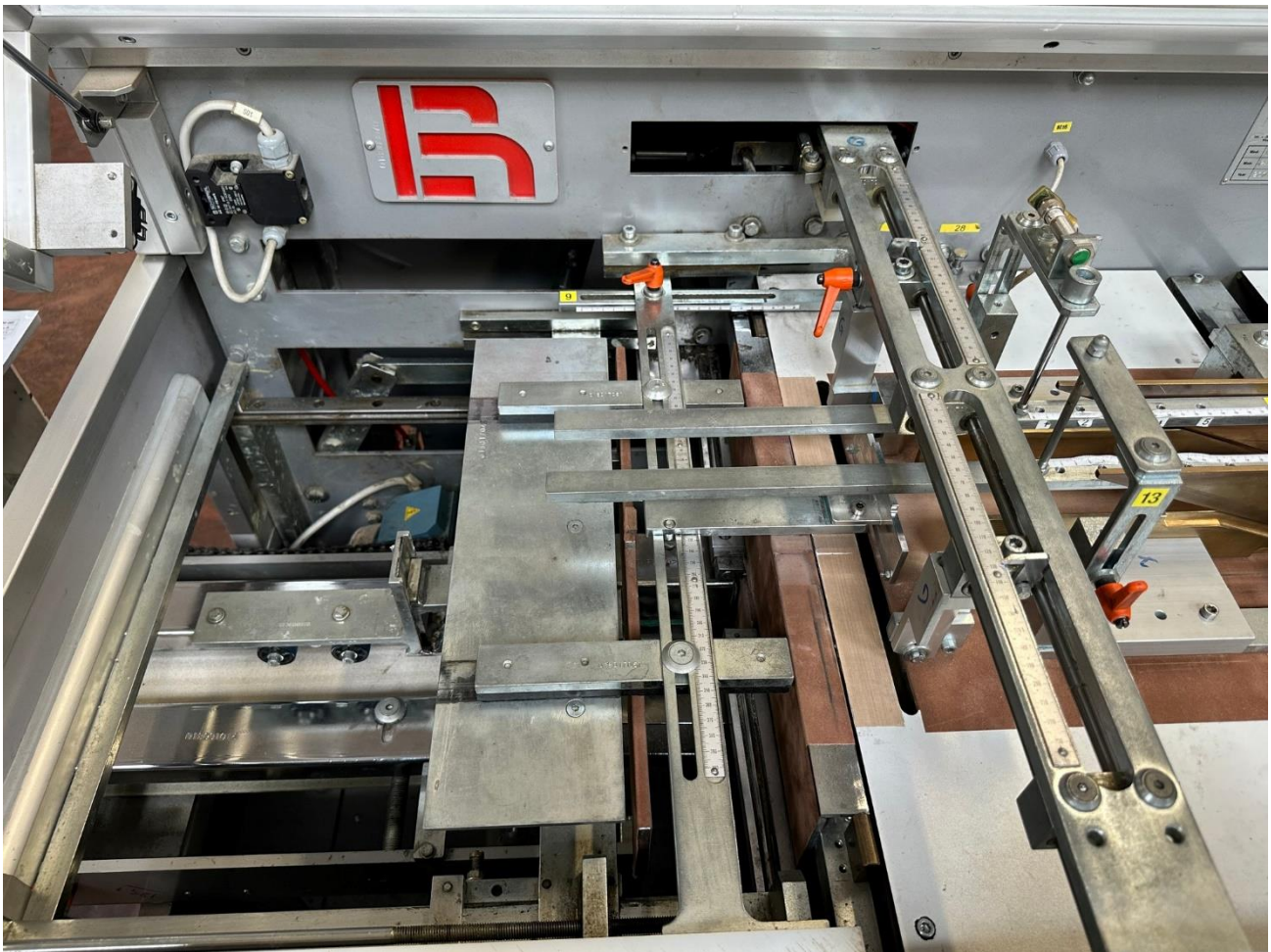


# Cellophaneuse

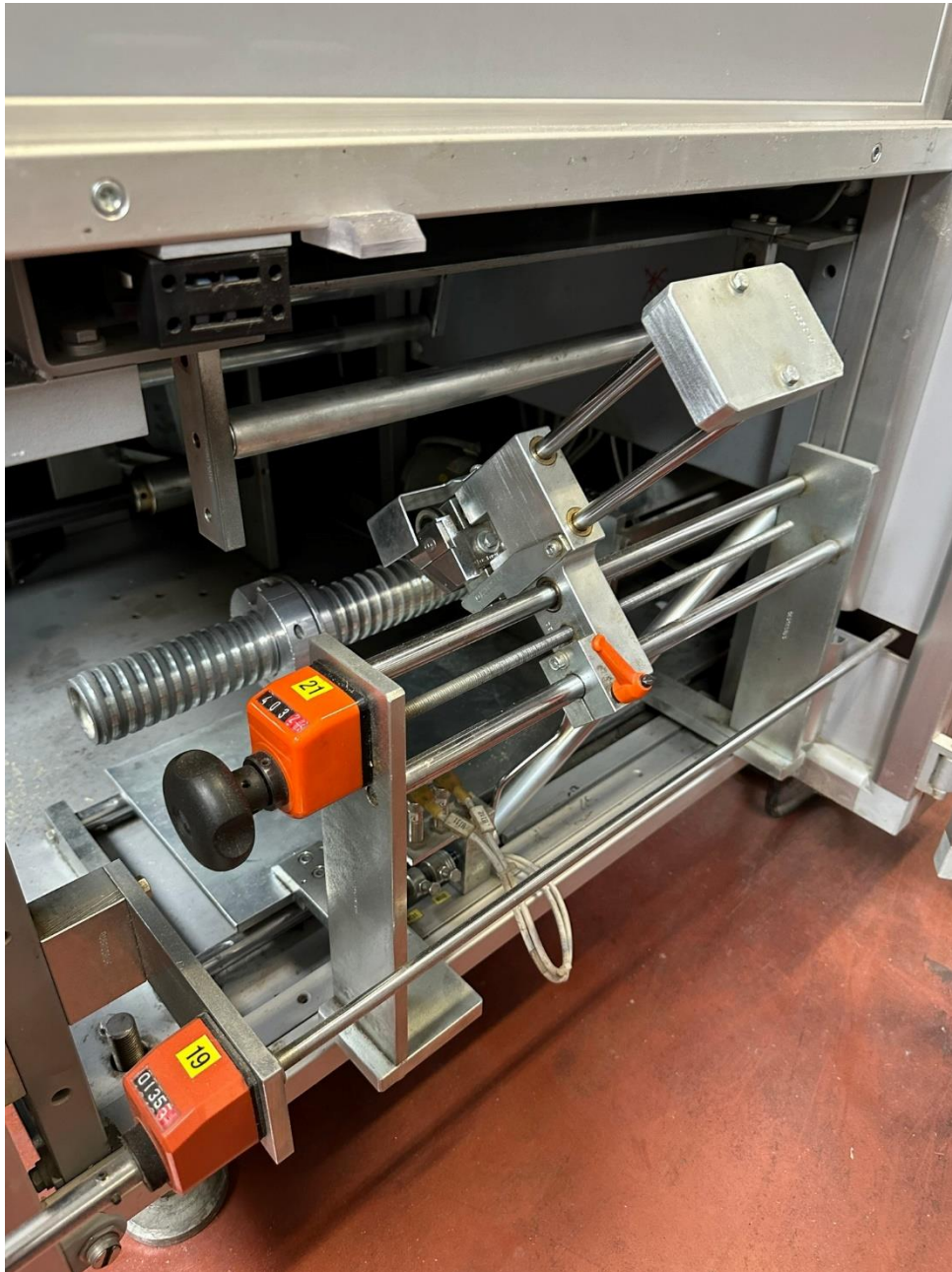




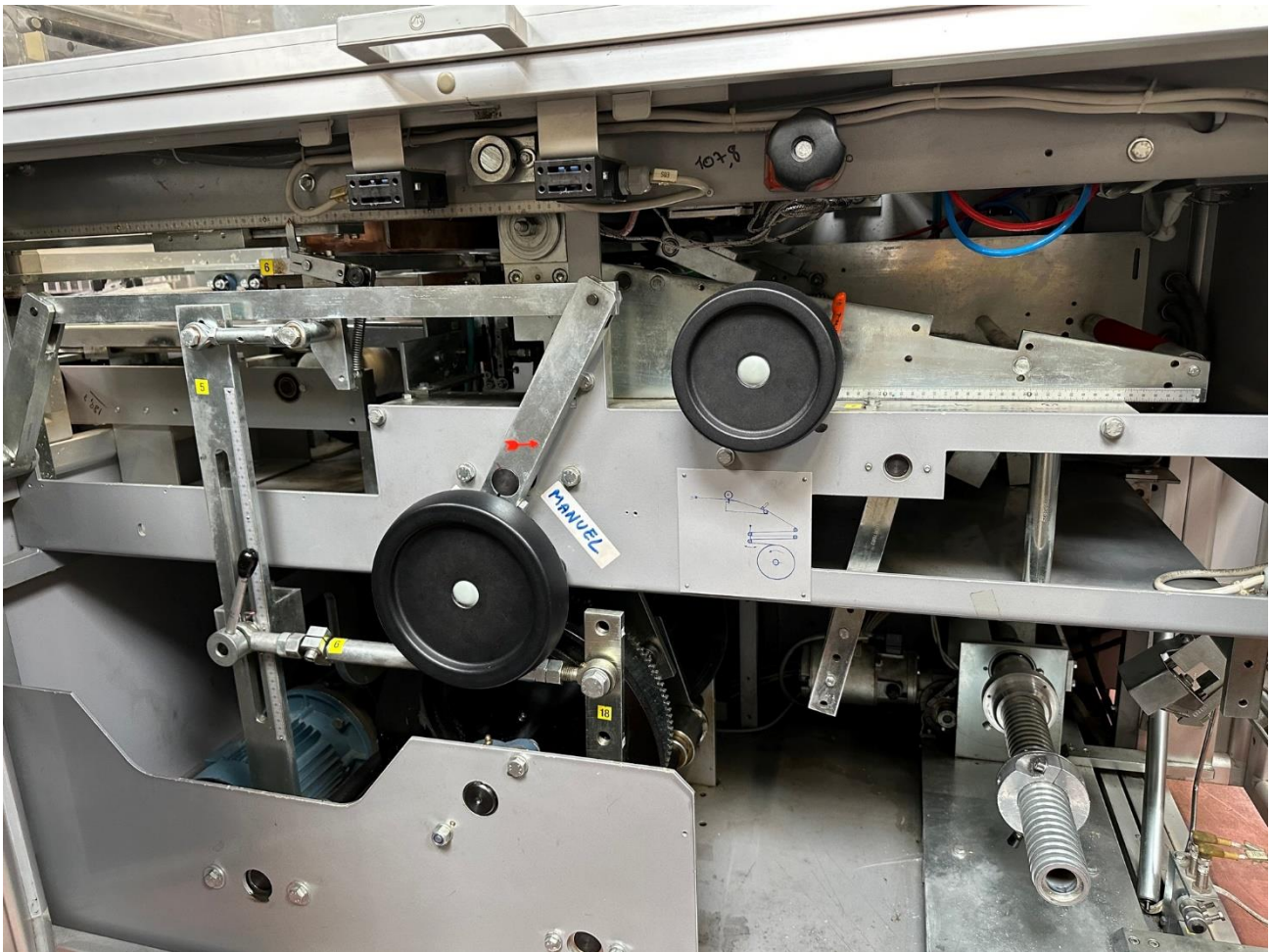


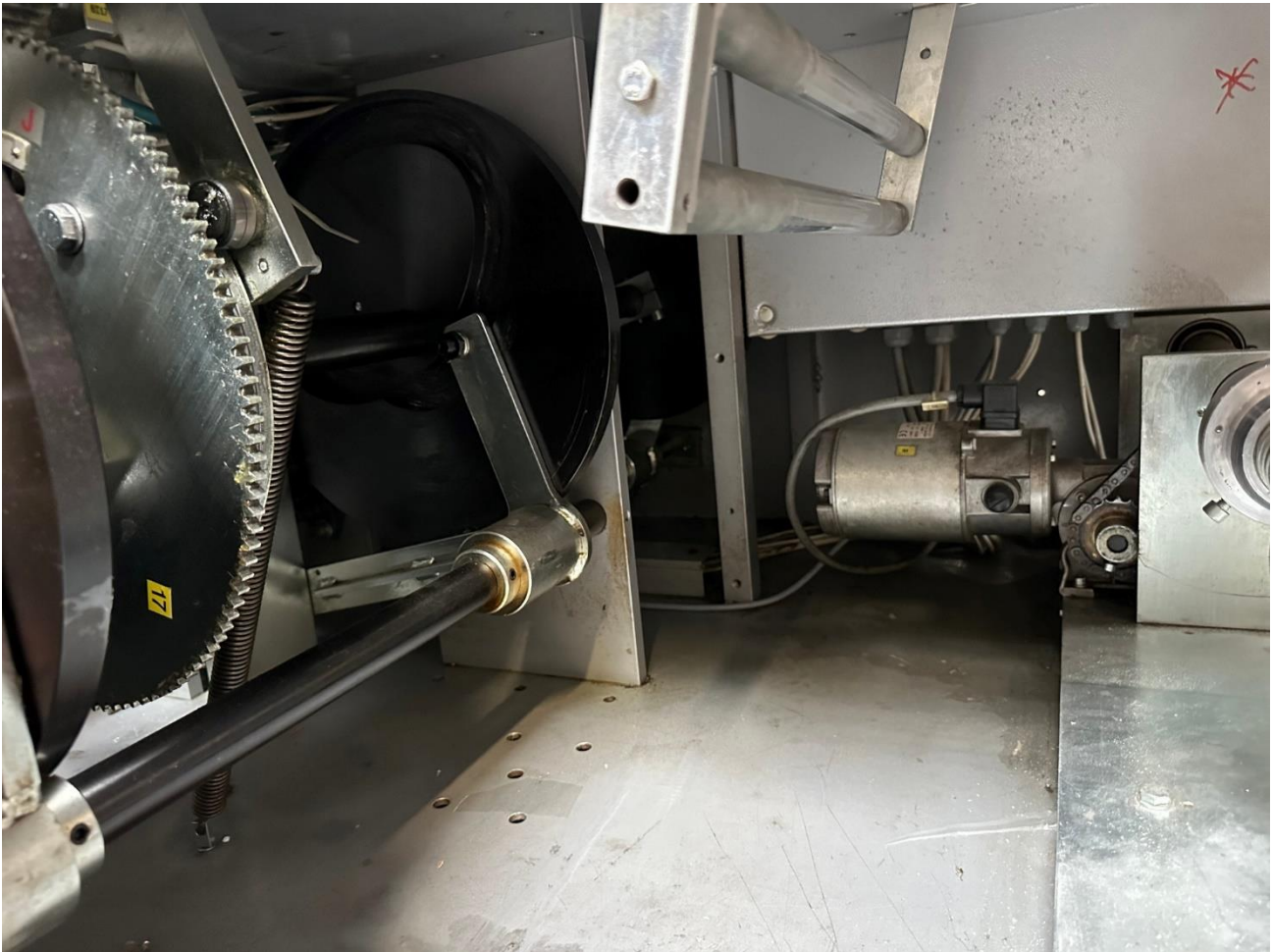




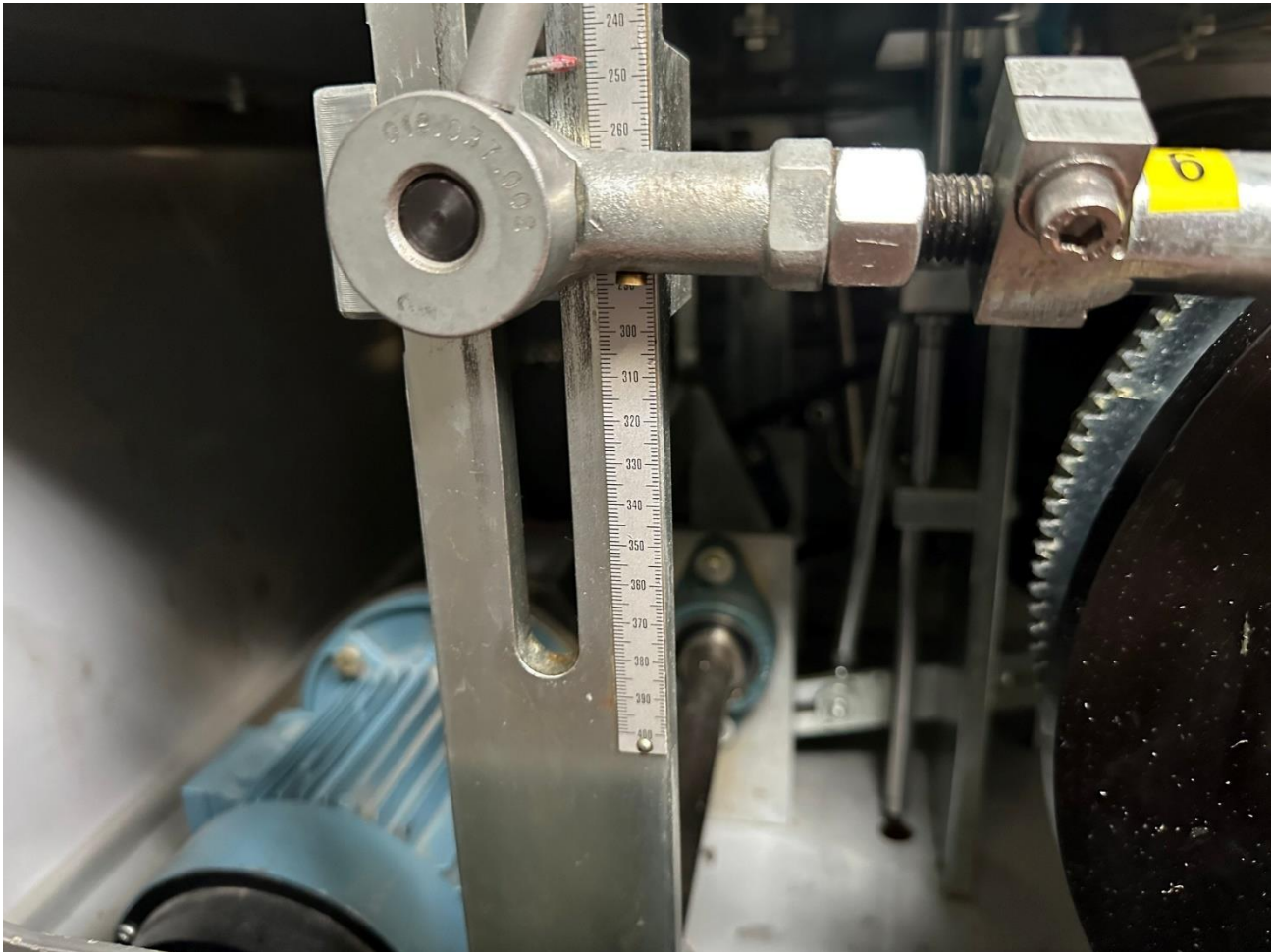
















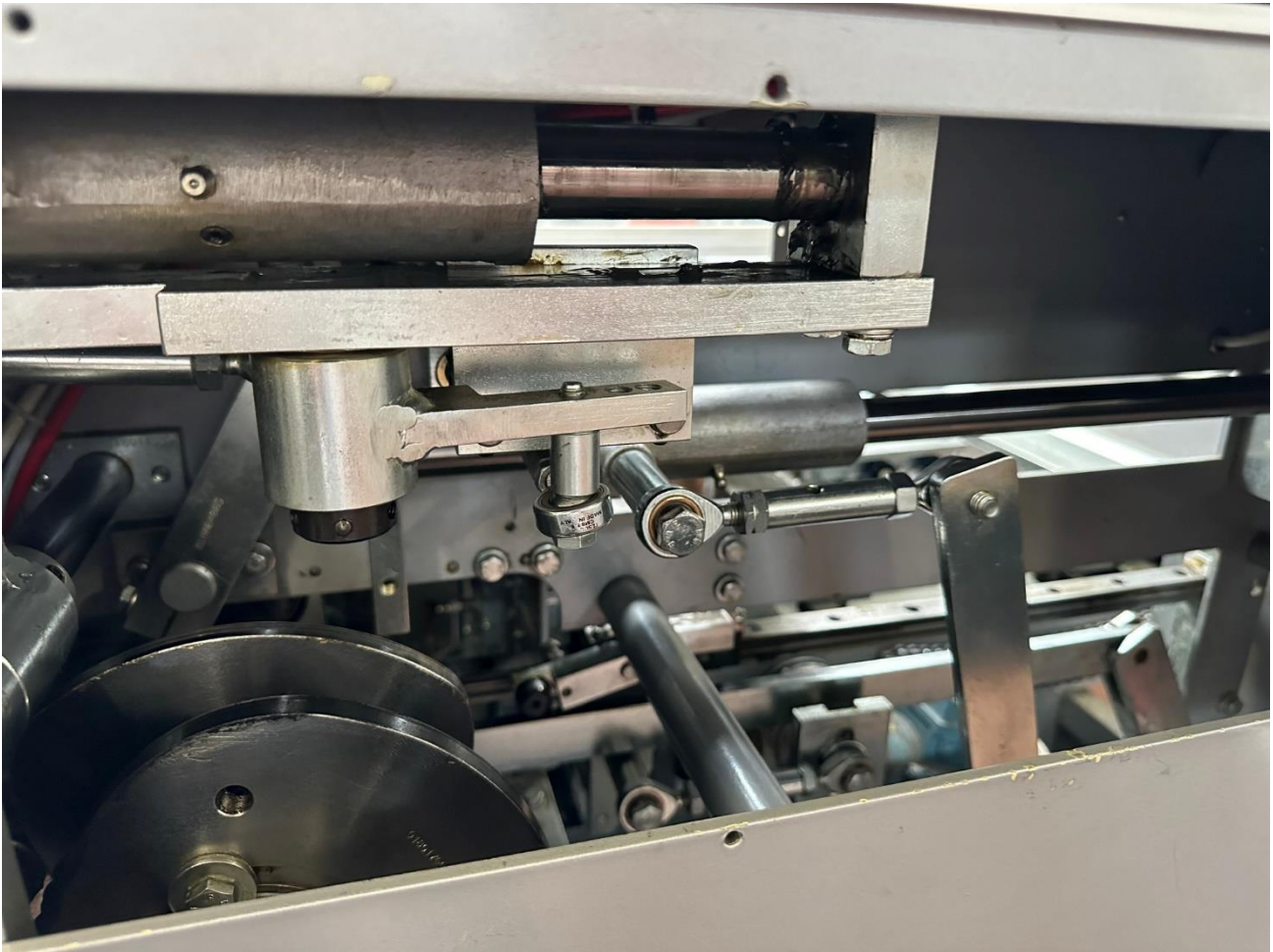
# Cellophaneuse







# Cellophaneuse



# Cellophaneuse

