

	Fiche machine n°	<h1>Encaisseuse</h1>	FRM-007
	6343		Indice A
	Indice A		Page 1 / 27

Encaisseuse

Fabricant : IMA BFB

Modèle : CP28BA

Année : 2006

Numéro de série : 5285

Automate : Siemens Simatic S7-300

Pupitre de contrôle UniOP

Cadence : 8 caisses/minute

Format caisses :

- Min – 220 x 120 x 120 mm
- Max – 600 x 400 x 350 mm

Groupe collage Nordson

Dimensions hors-tout (l x p x h) : 4500 x 1840 x 2055 mm

Poids : 1500 kg

Conforme normes CE

Incoterm : EXW

Case packer

Manufacturer: IMA BFB

Model: CP28BA

Year: 2006

Serial number: 5285

PLC: Siemens Simatic S7-300

Control panel: UniOP

Speed: 8 cases/minute

Cases' format:

- *Min – 220 x 120 x 120 mm*
- *Max – 600 x 400 x 350 mm*

Nordson glueing unit

Overall dimensions (l x d x h): 4500 x 1840 x 2055 mm

Weight: 1500 kg

EC standards' compliant

Incoterm: EXW









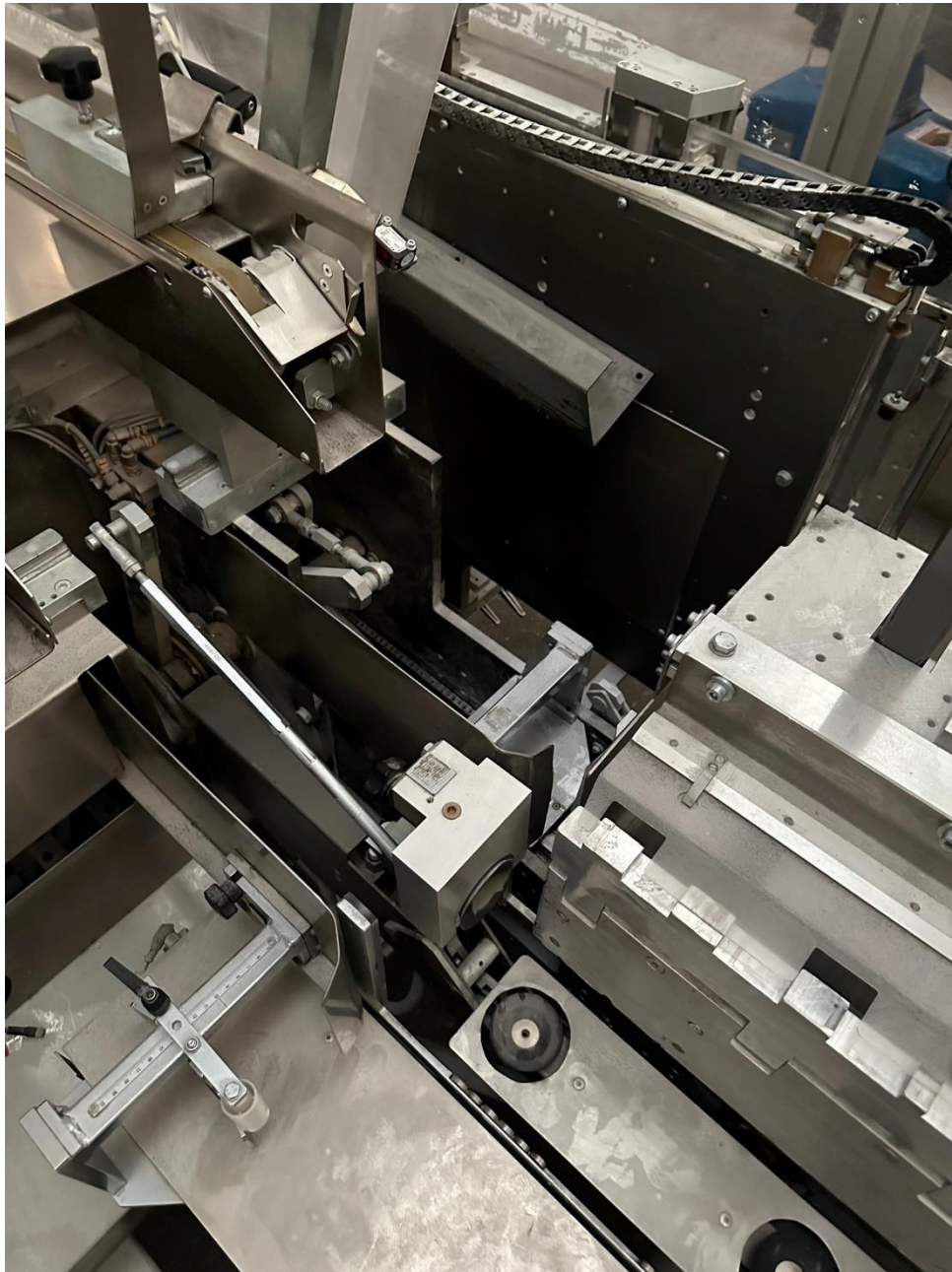




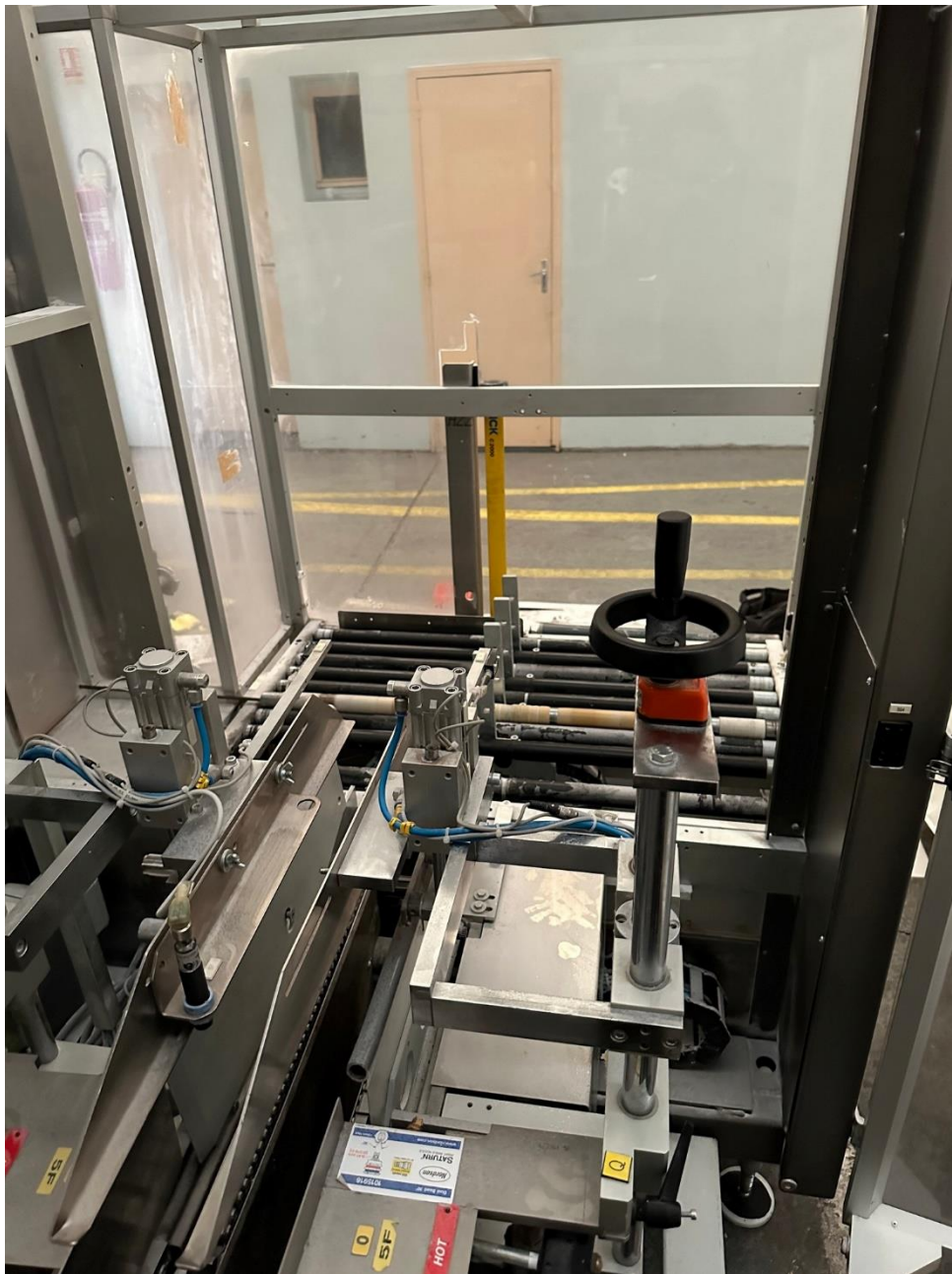




















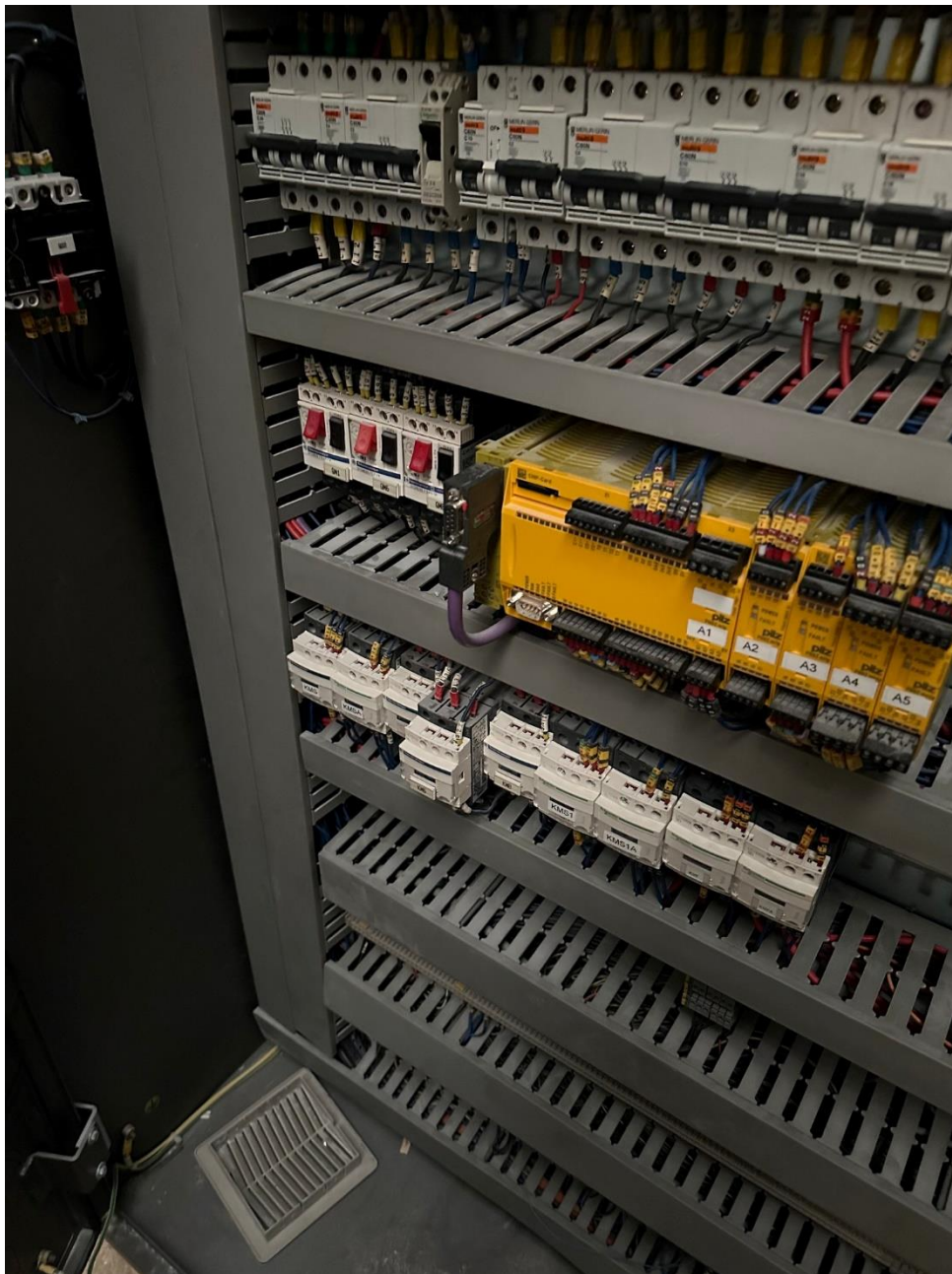


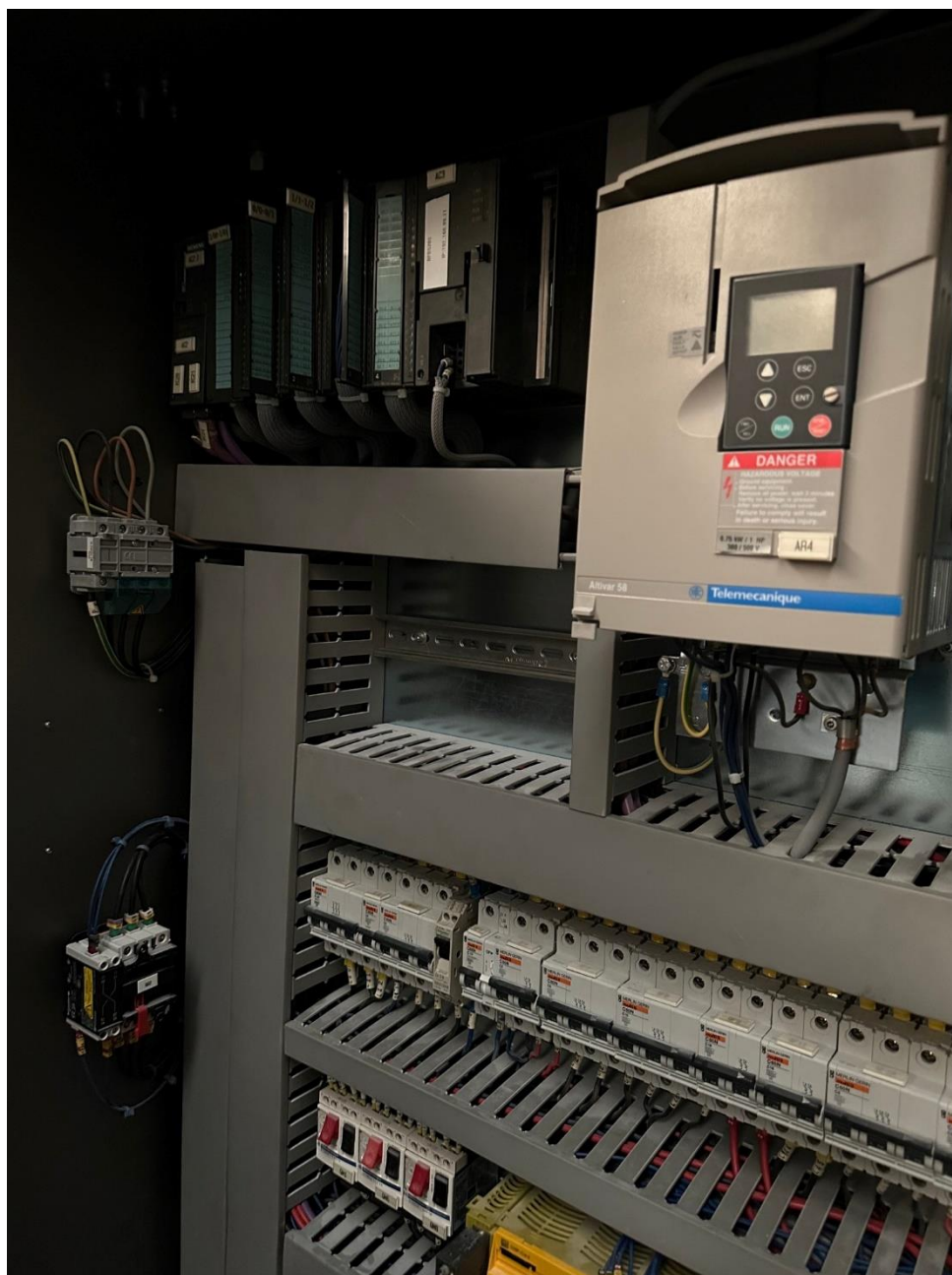


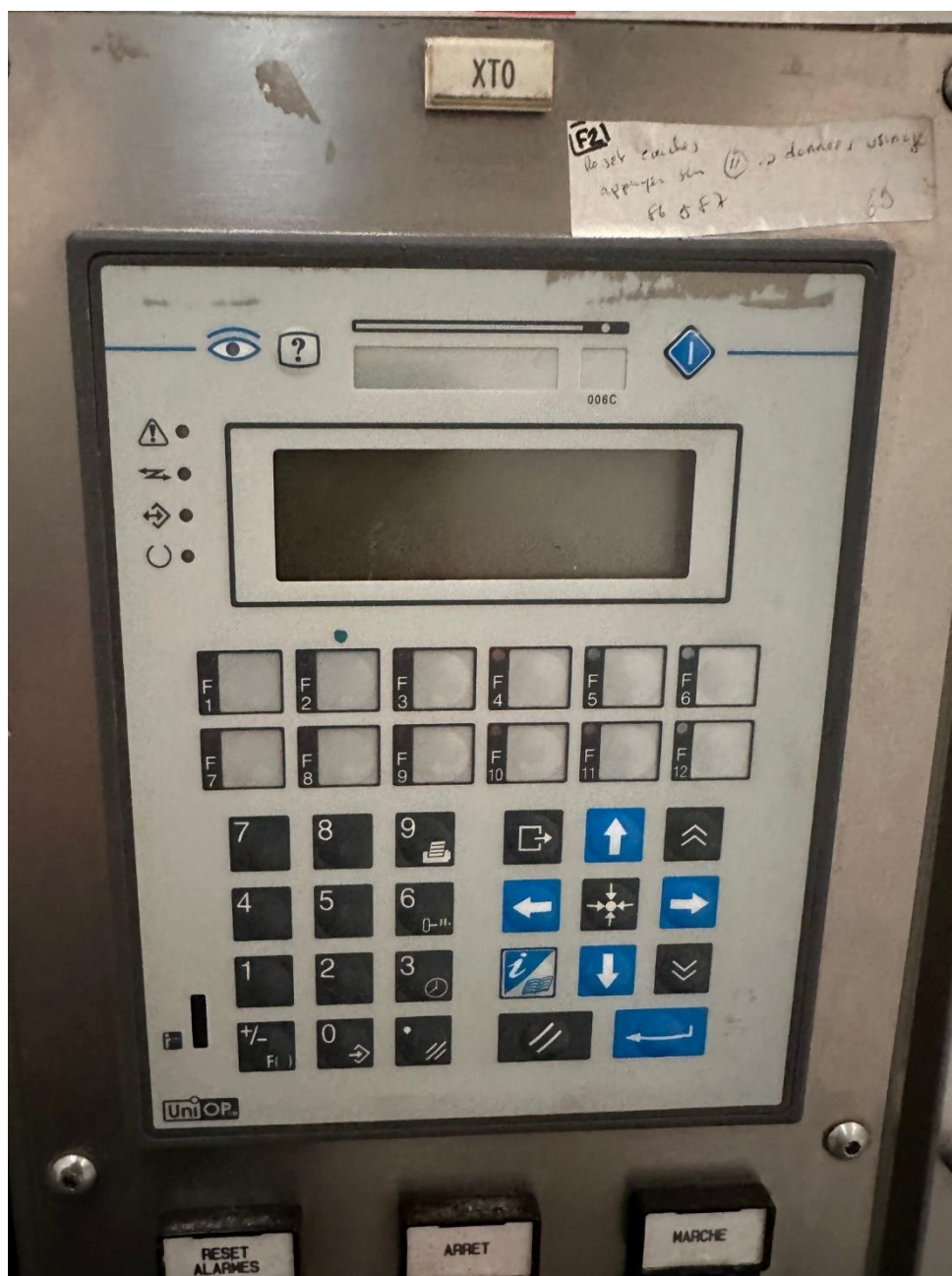
















Ingenneo
used equipment

Fiche machine n°

6343

Indice A

Encaisseuse

FRM-007

Indice A

Page 27 /
27

