

	Fiche machine n°	<h1>Encaisseuse</h1>	FRM-007
	6172		Indice A
	Indice A		Page 1 / 28

Encaisseuse

Fabricant : Marchesini Packservice

Modèle : PS 500

Année : 2004

Numéro de série : 13012

Cadence max : 6 caisses/minute (vitesse mécanique 250 étuis/minute)

5 formats

Plage de format caisses :

- Min : 150 x 120 x 90 mm
- Max : 600 x 450 x 450 mm

Plage de format étuis :

- Min : 25 x 10 x 65 mm
- Max : 600 x 120 x 300 mm

Automate : Siemens Simatic S7-300

Dimensions hors-tout (l x p x h) : approx. 3600 x 2350 x 1970 mm

Poids : 1500 kg

Alimentation : 400 V Pe + N / 50 Hz / 5 kW

Documentation technique : disponible, détails sur demande

Incoterm : EXW

Case packer

Manufacturer: Marchesini Packservice

Model: PS 500

Year: 2004

Serial number: 13012

Max speed: 6 cases/minute (mechanical speed 250 cartons/minute)

5 formats

Cases' format range:

- *Min : 150 x 120 x 90 mm*
- *Max : 600 x 450 x 450 mm*

Cartons' format range:

- *Min : 25 x 10 x 65 mm*
- *Max : 600 x 120 x 300 mm*

PLC: Siemens Simatic S7-300

Overall dimensions (l x d x h): approx. 3600 x 2350 x 1970 mm

Weight: 1500 kg

Power supply: 400 V Pe + N / 50 Hz / 5 kW

Technical documentation: available, details on request

Incoterm: EXW













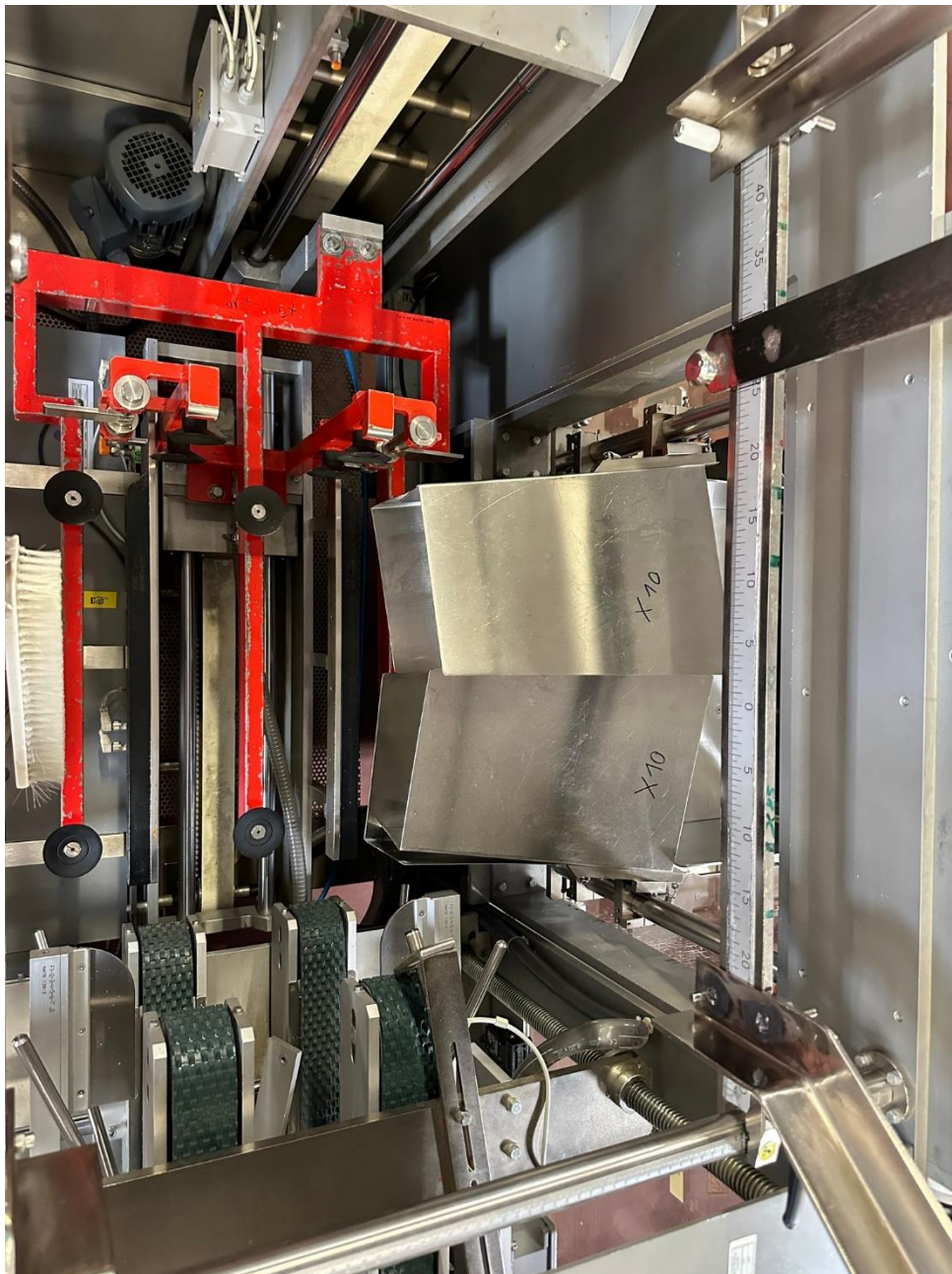






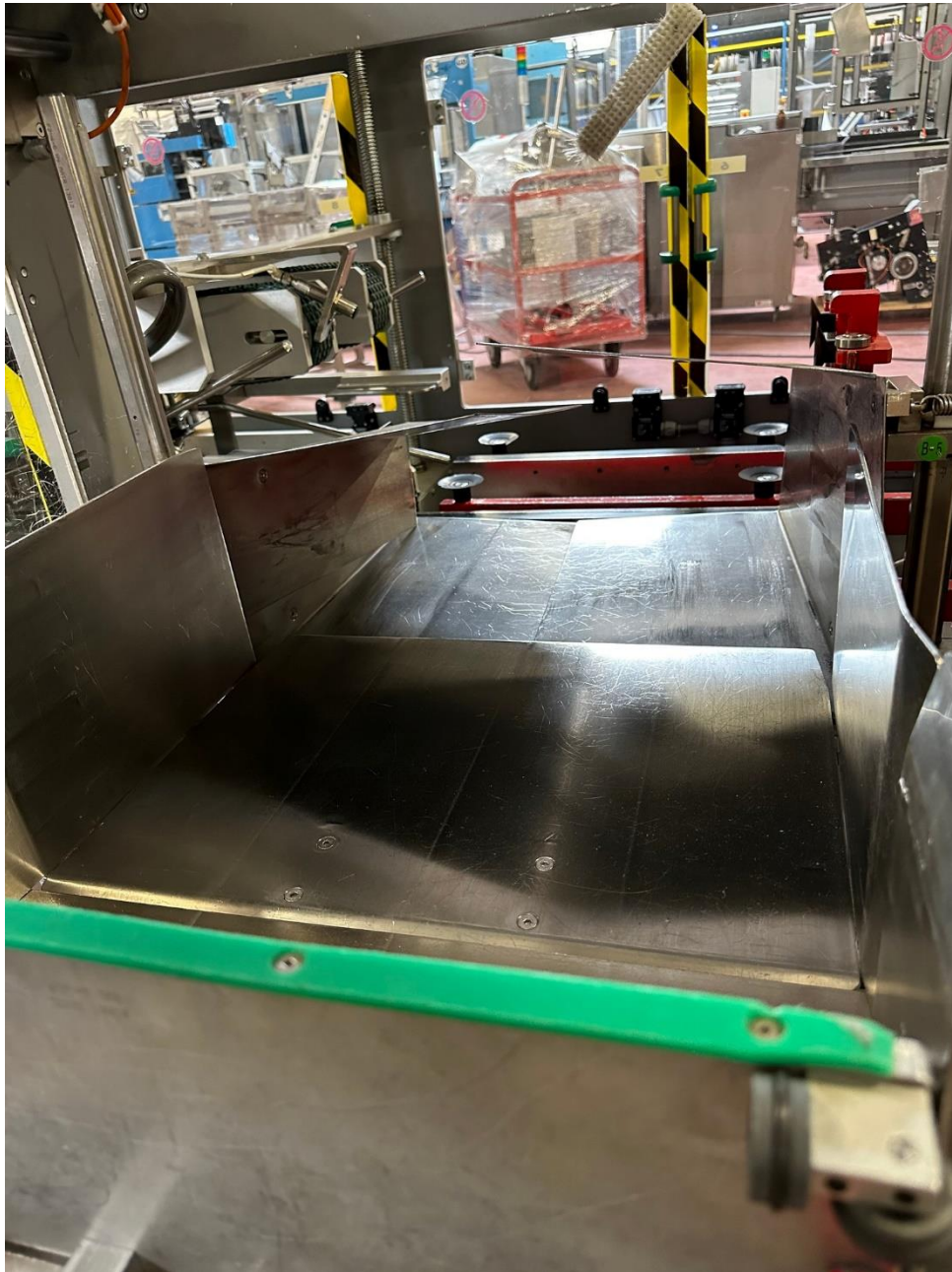


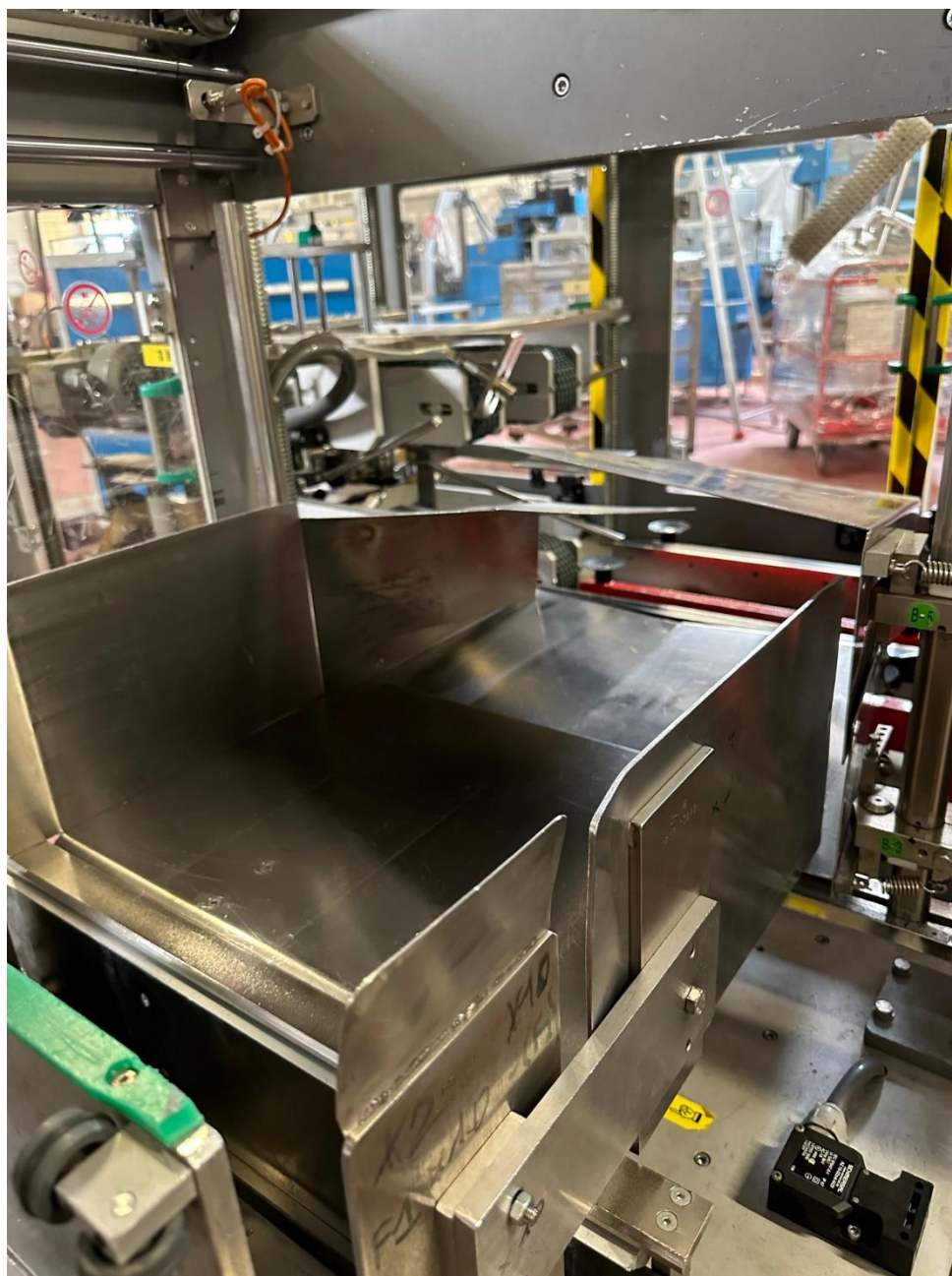


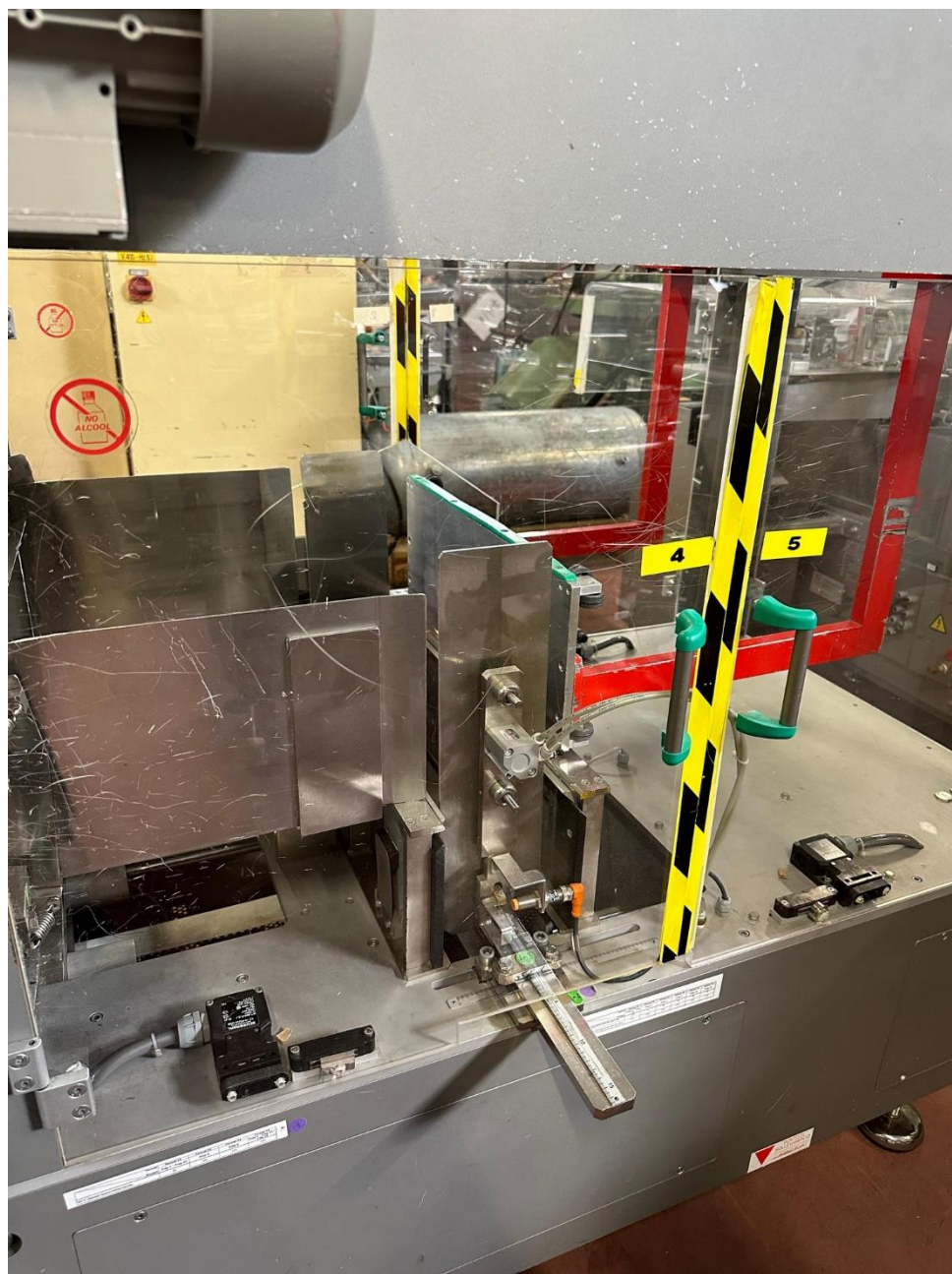


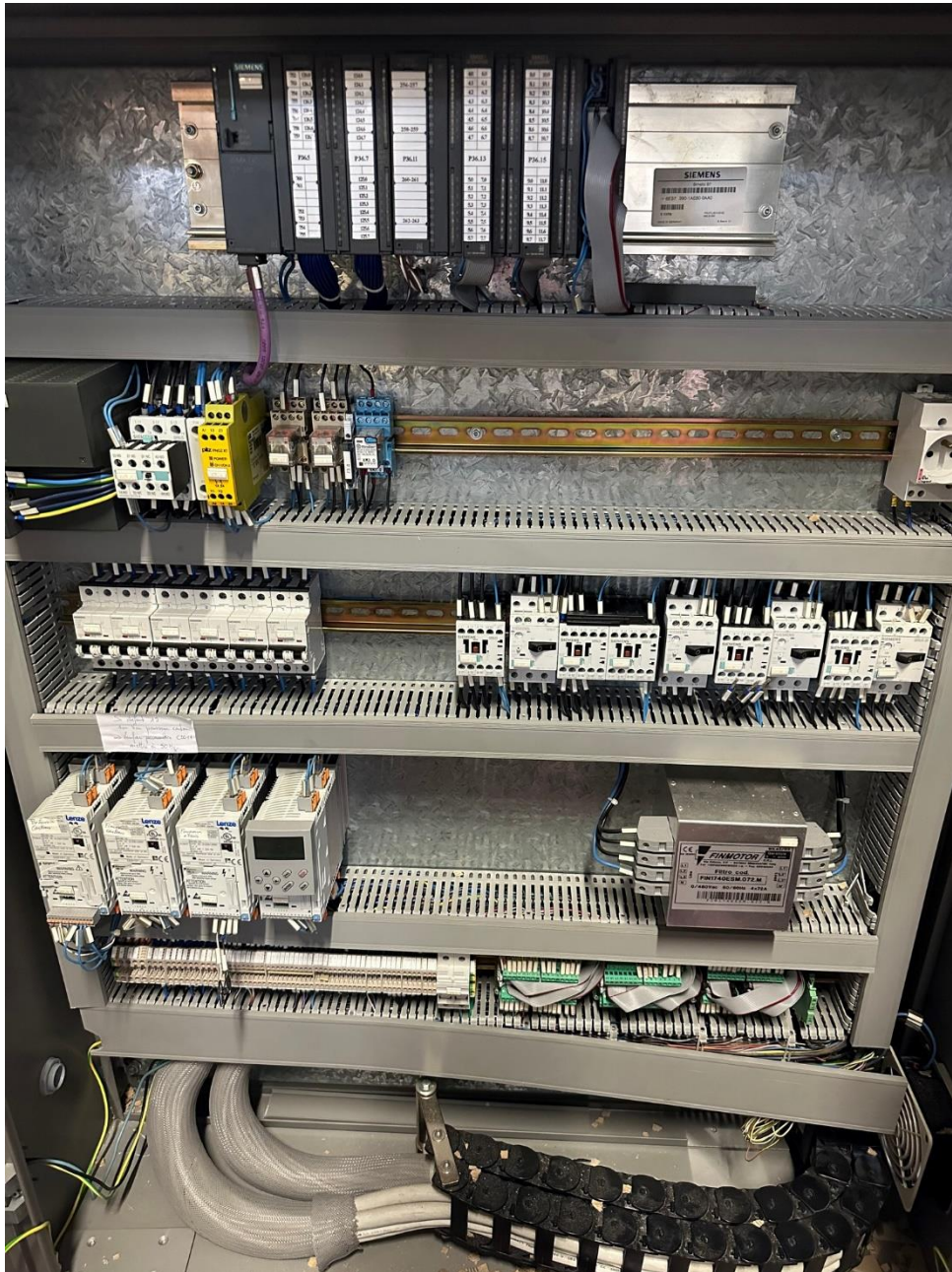


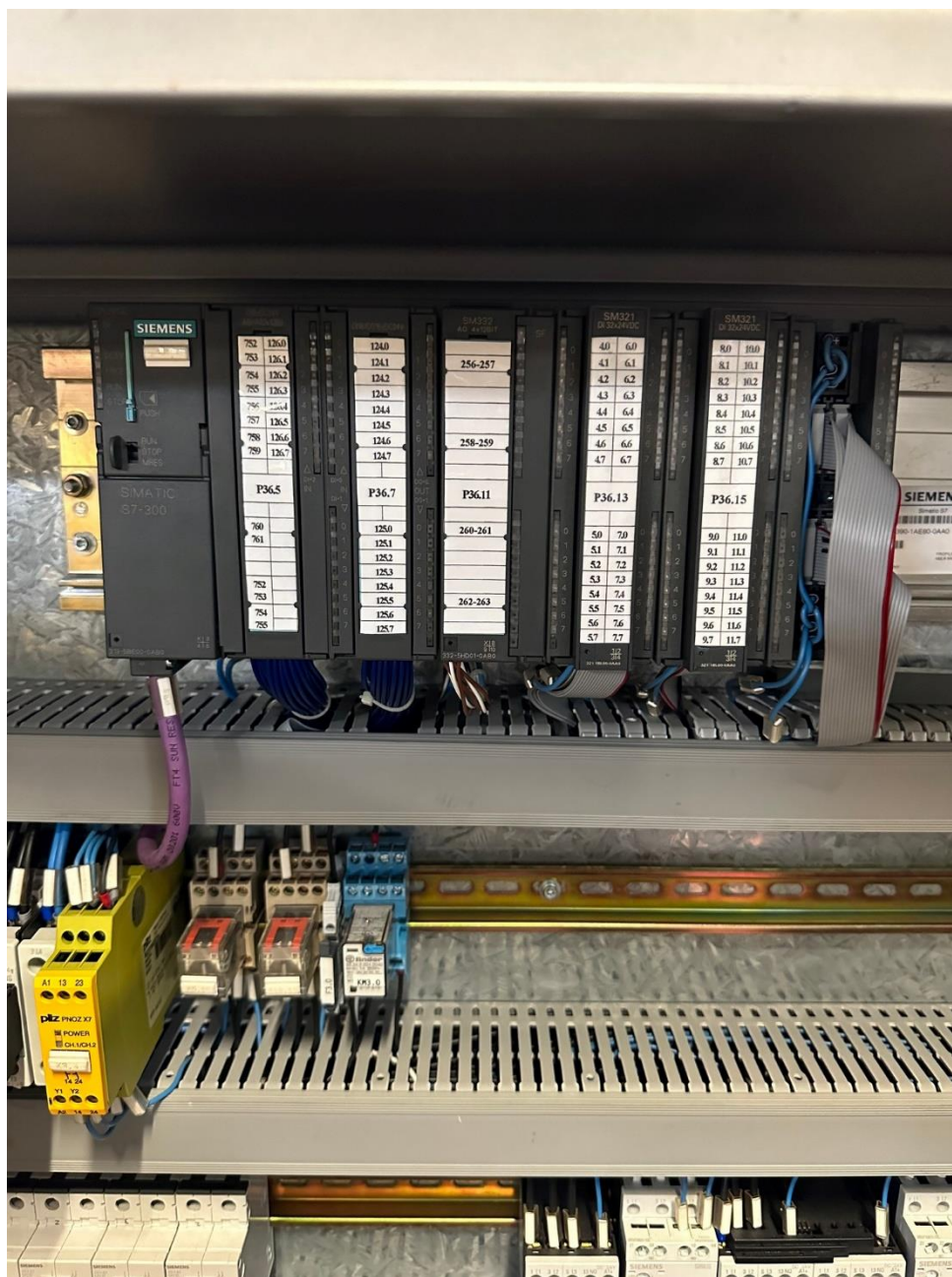


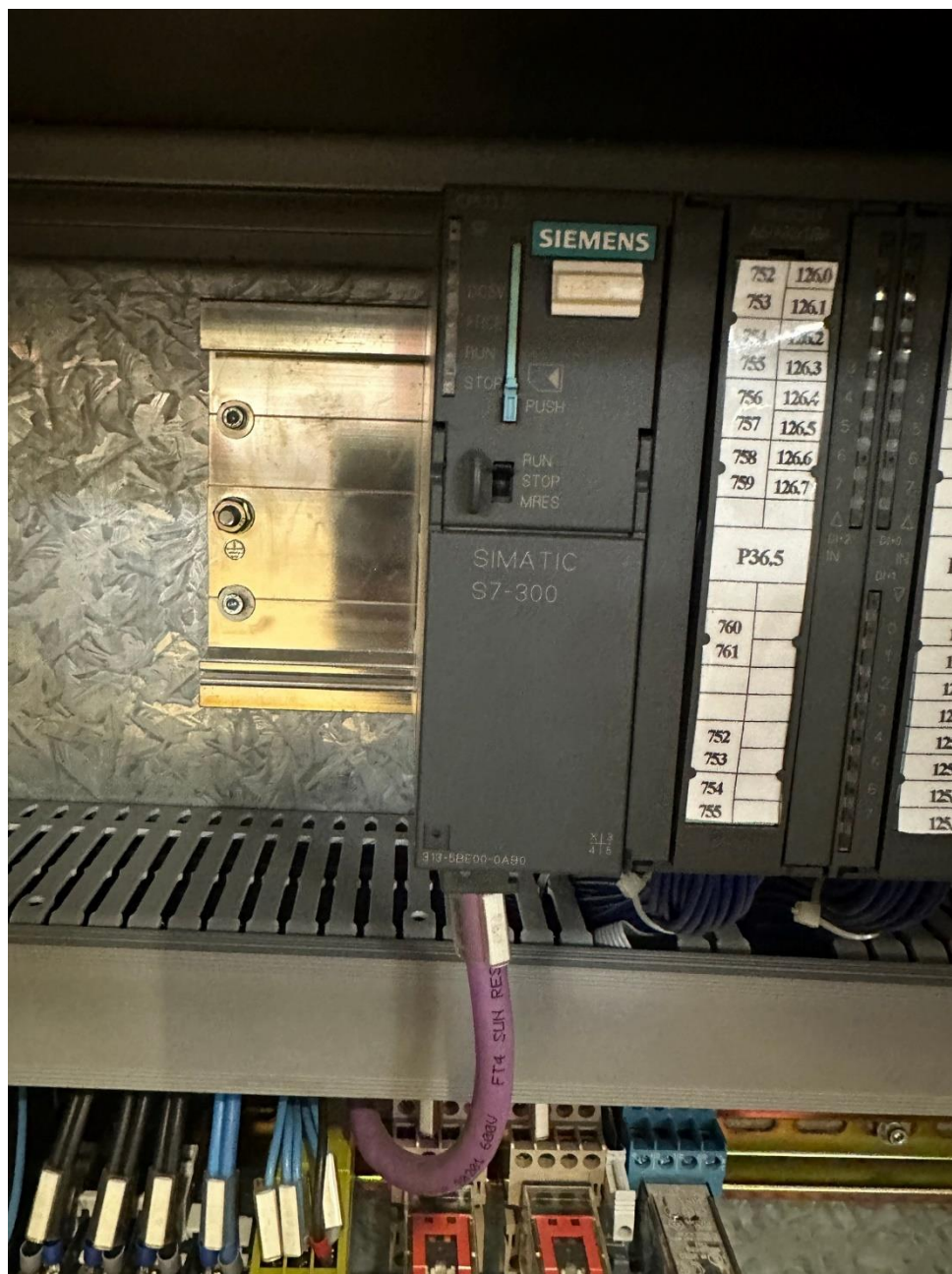


























Ingenneo
used equipment

Fiche machine n°

6172

Indice A

Encaisseuse

FRM-007

Indice A

Page 28 /
28

