

	Fiche machine n°	<h1>Trieuse pondérale</h1>	FRM-007
	5938		Indice A
	Indice A		Page 1 / 11

Trieuse pondérale

Fabricant : Tecno Europa

Modèle : SENC AC 40

Année : 2001

Numéro de série : 4919

Alimentation : 230 V / 50 Hz / 0,6 kVA

Conforme normes CE

Tapis d'entrée (L x l) : 730 x 150 mm

Tapis de pesée (L x l) : 500 x 80 mm

Tapis de sortie (L x l) : 730 x 150 mm

Dimensions hors-tout (l x p x h) : 1300 x 850 x 2000 mm

Poids : 100 kg

Documentation technique : disponible, détails sur demande

Incoterm : EXW

Checkweigher

Manufacturer: Tecno Europa

Model: SENC AC 40

Year: 2001

Serial number: 4919

Power supply: 230 V / 50 HZ / 0,6 kVA

EC standards' compliant

Infeed conveyor (l x w): 730 x 150 mm

Weighing conveyor (l x w): 500 x 80 mm

Outfeed conveyor (l x w): 730 x 150 mm

Overall dimensions (l x d x h): 1300 x 850 x 2000 mm

Weight: 100 kg

Technical documentation: available, details on request

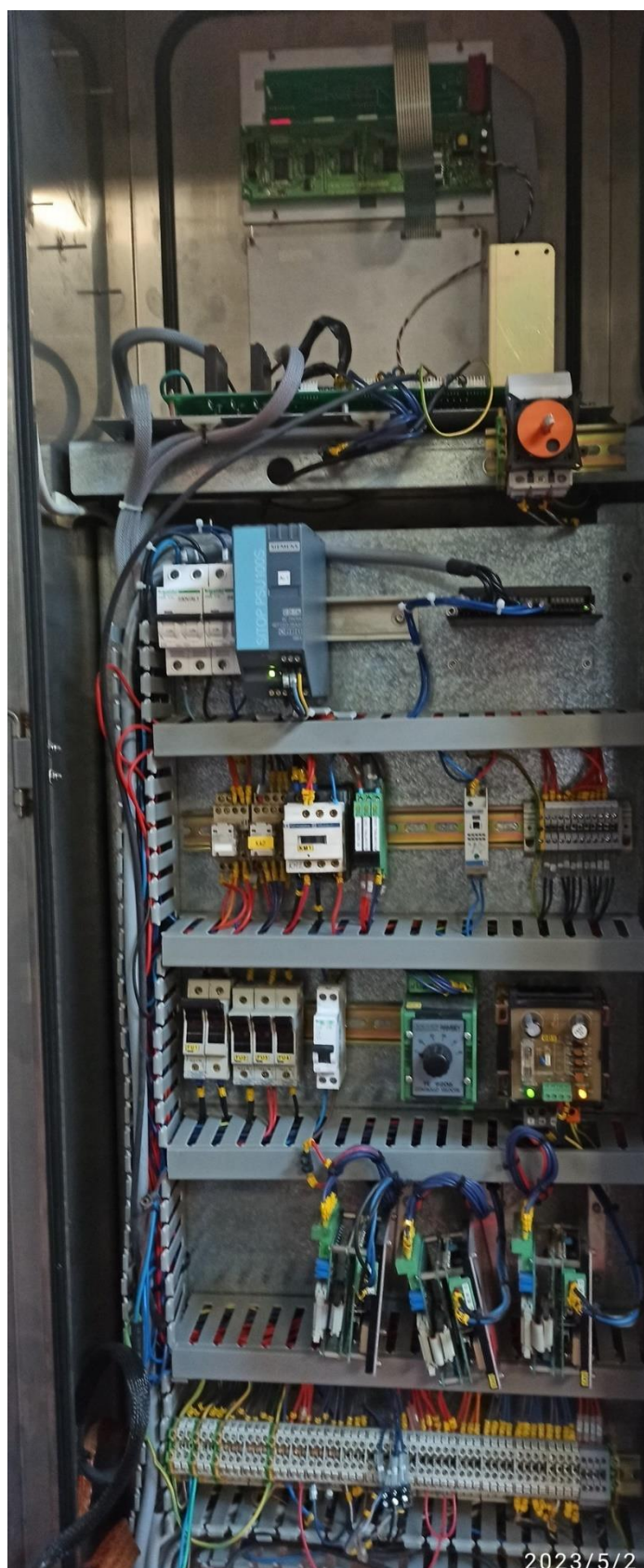
Incoterm: EXW



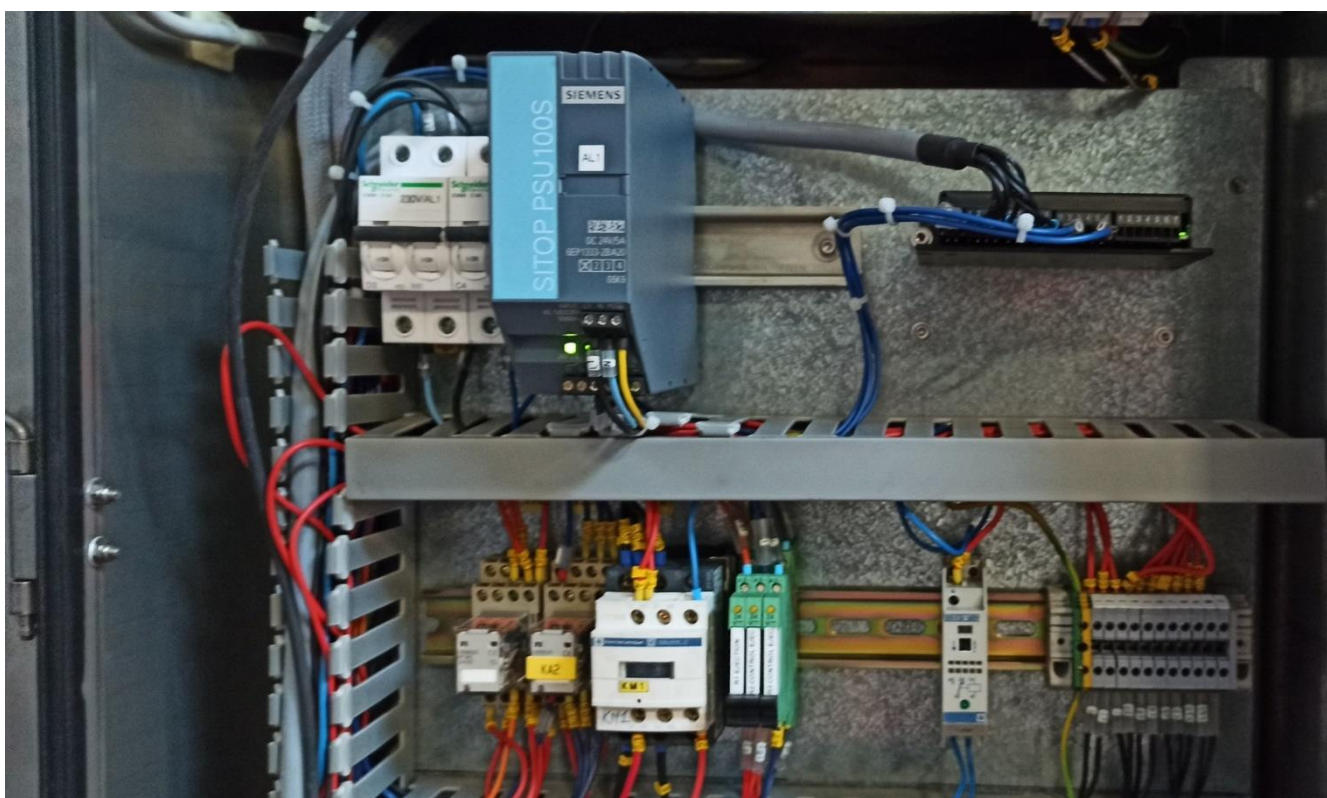
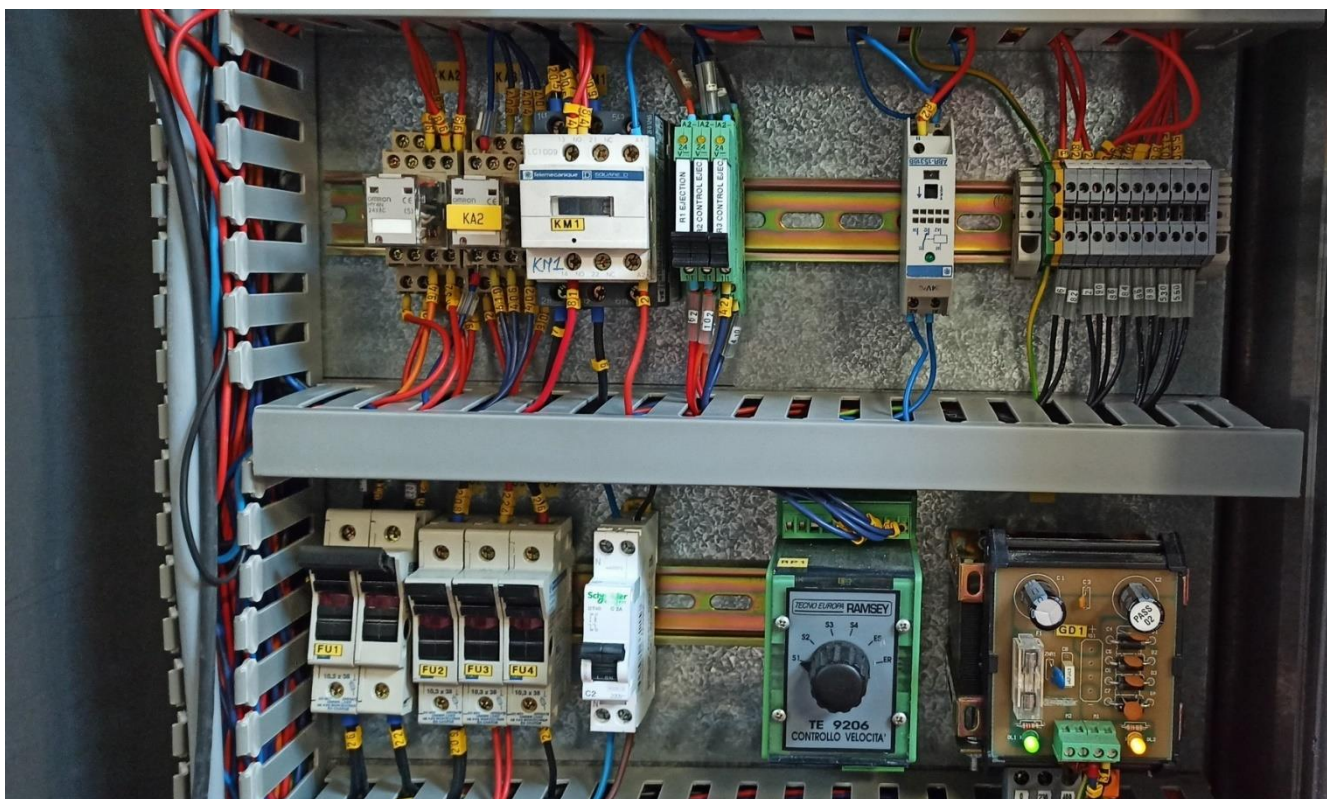
Trieuse pondérale



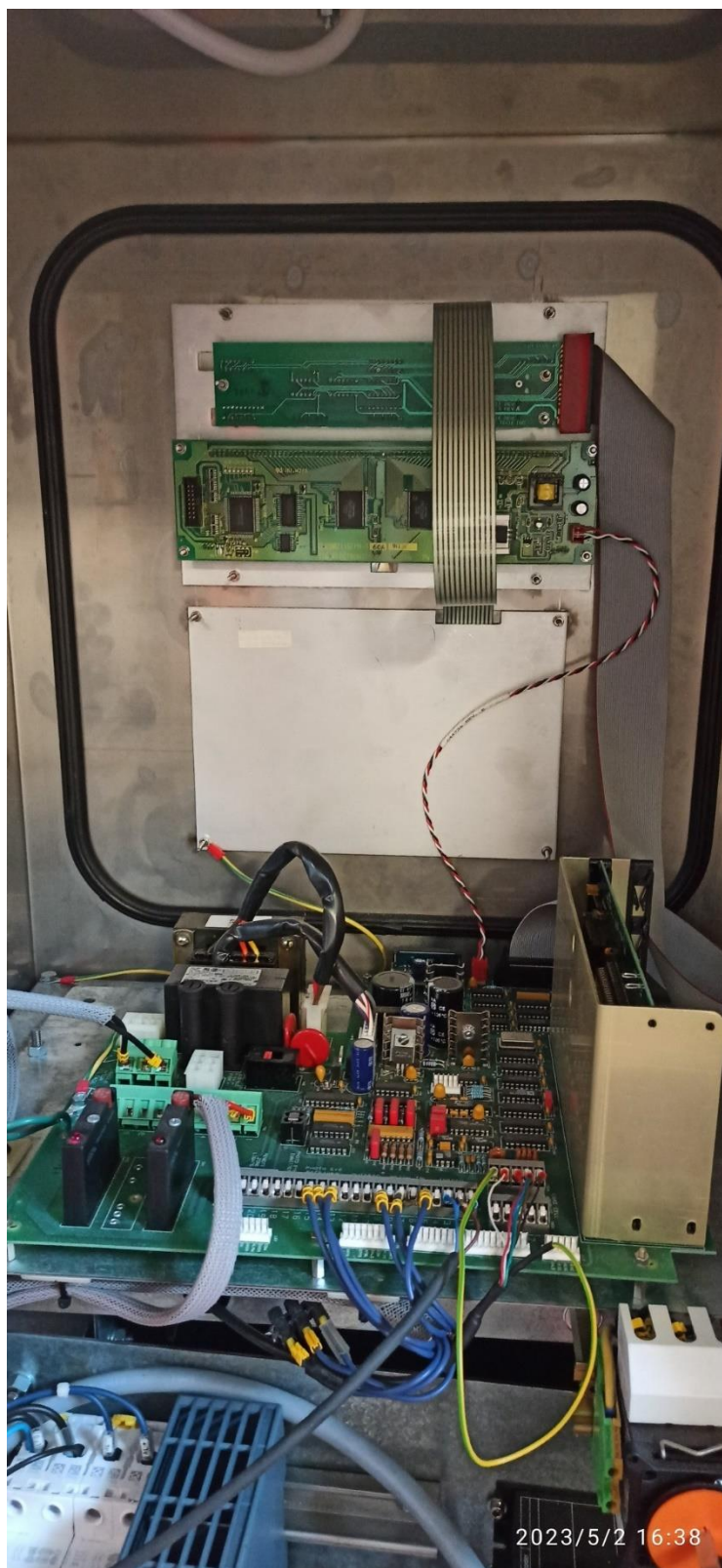


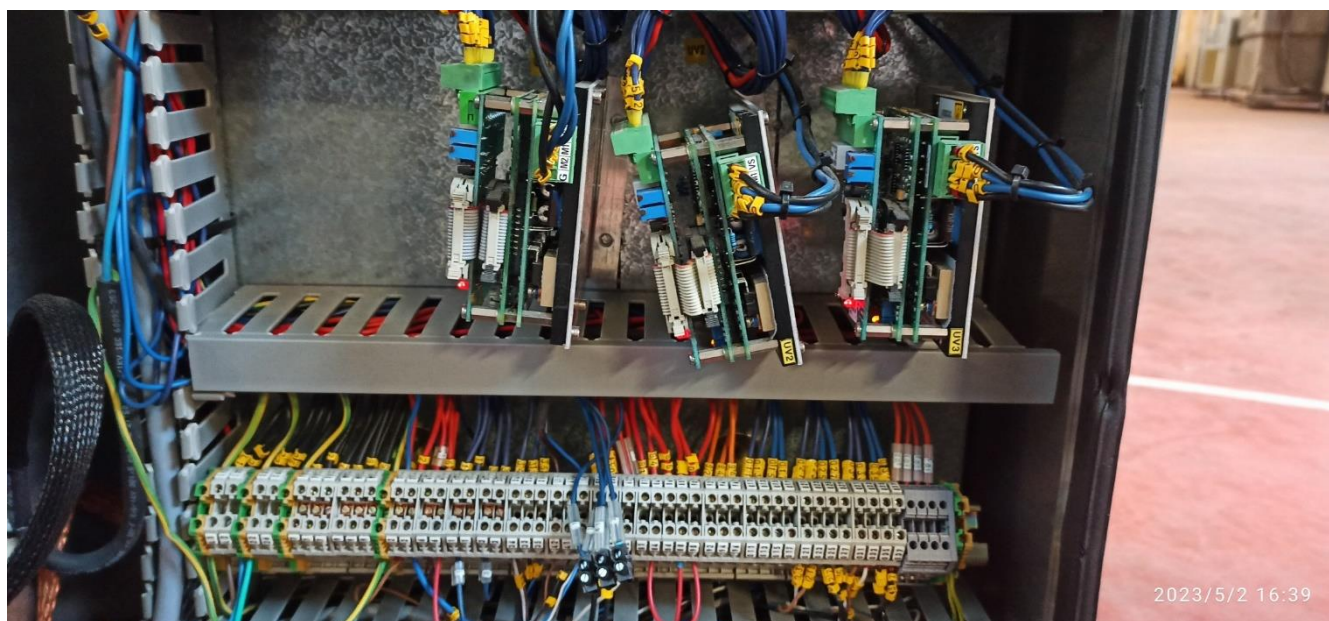
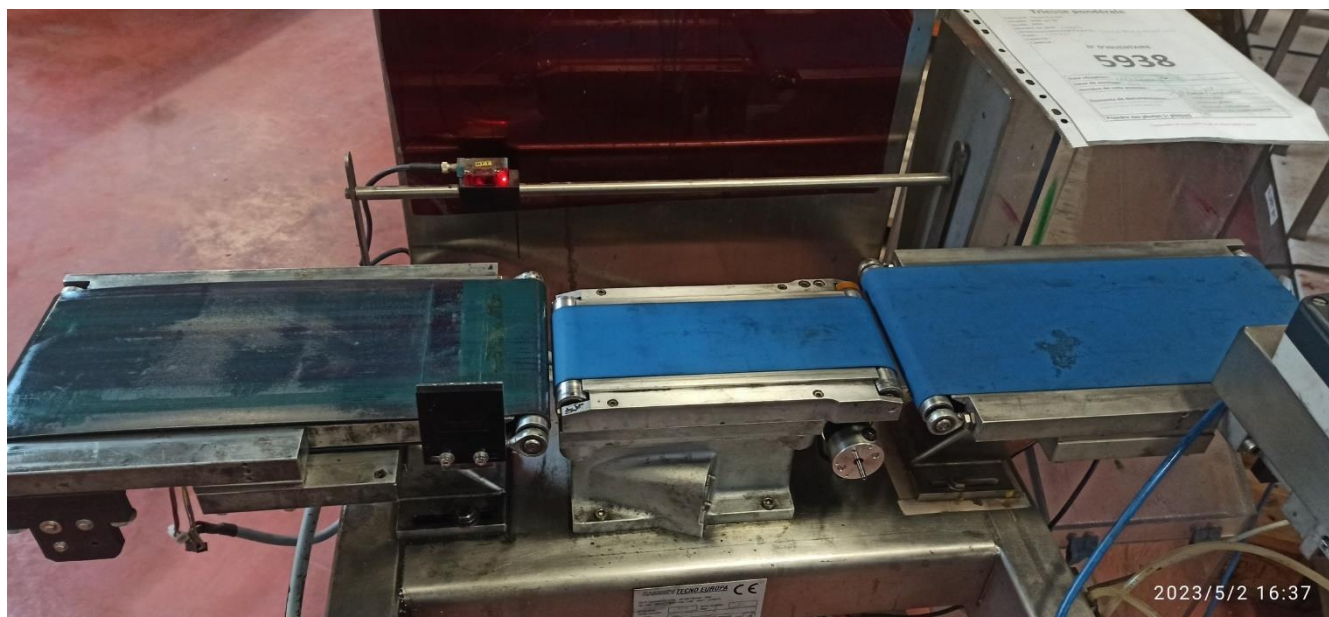


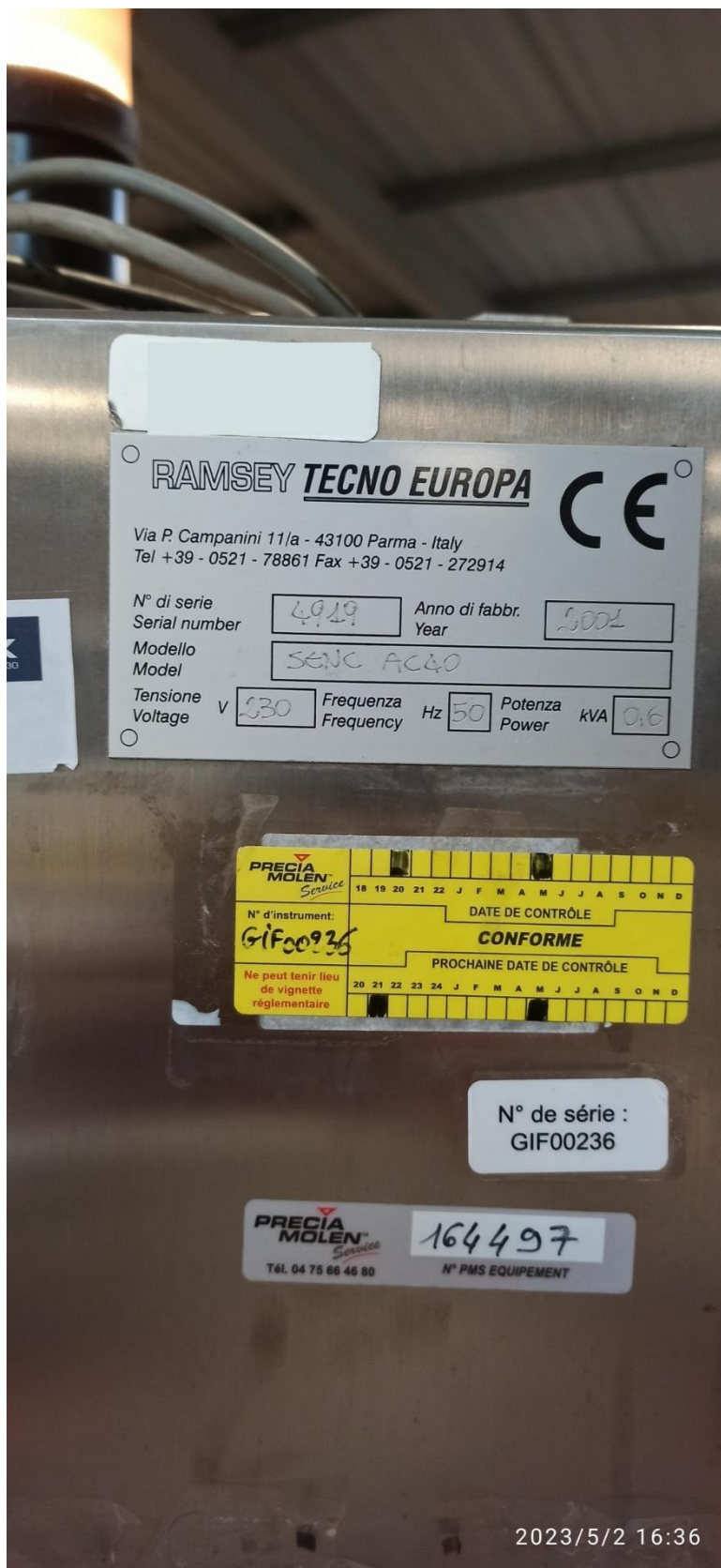
Trieuse pondérale

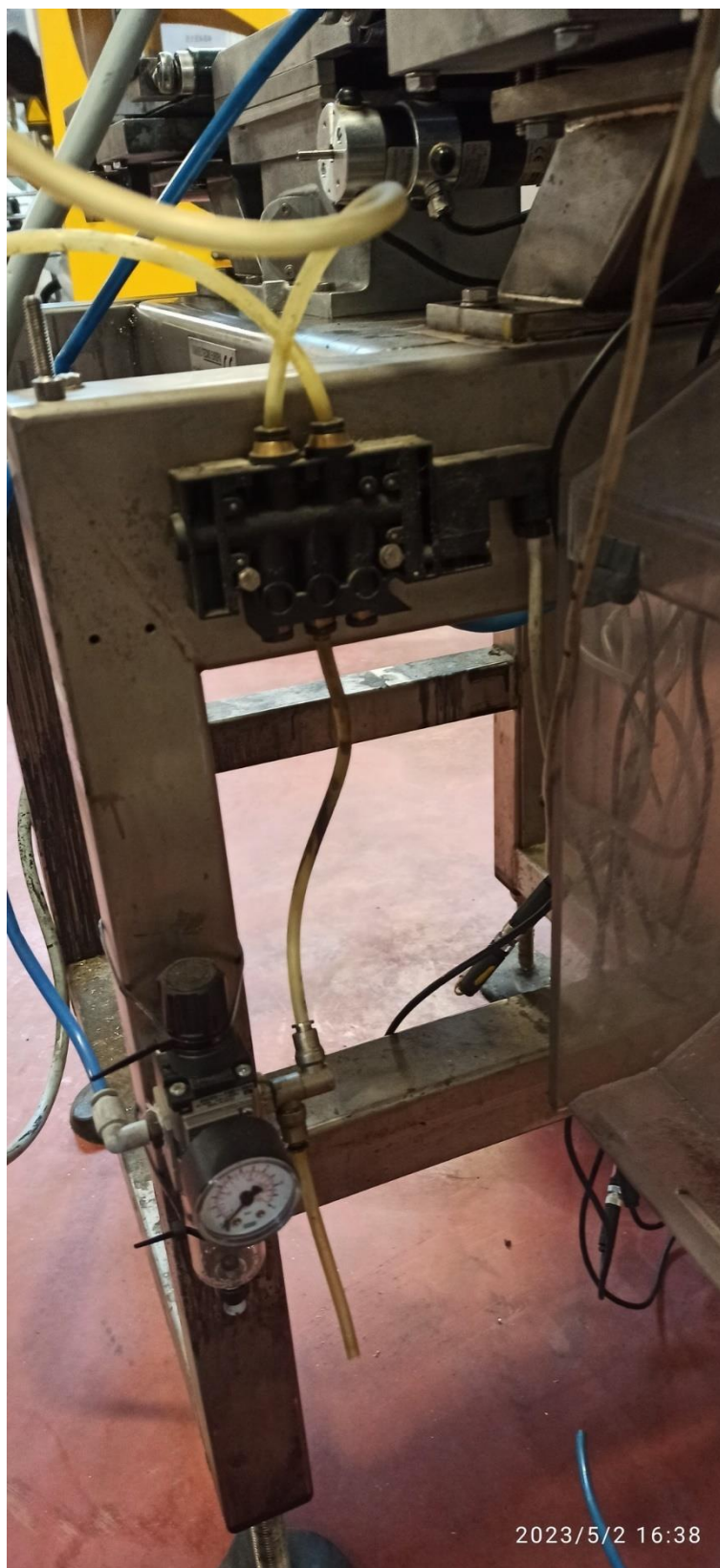


Trieuse pondérale









Trieuse pondérale

