

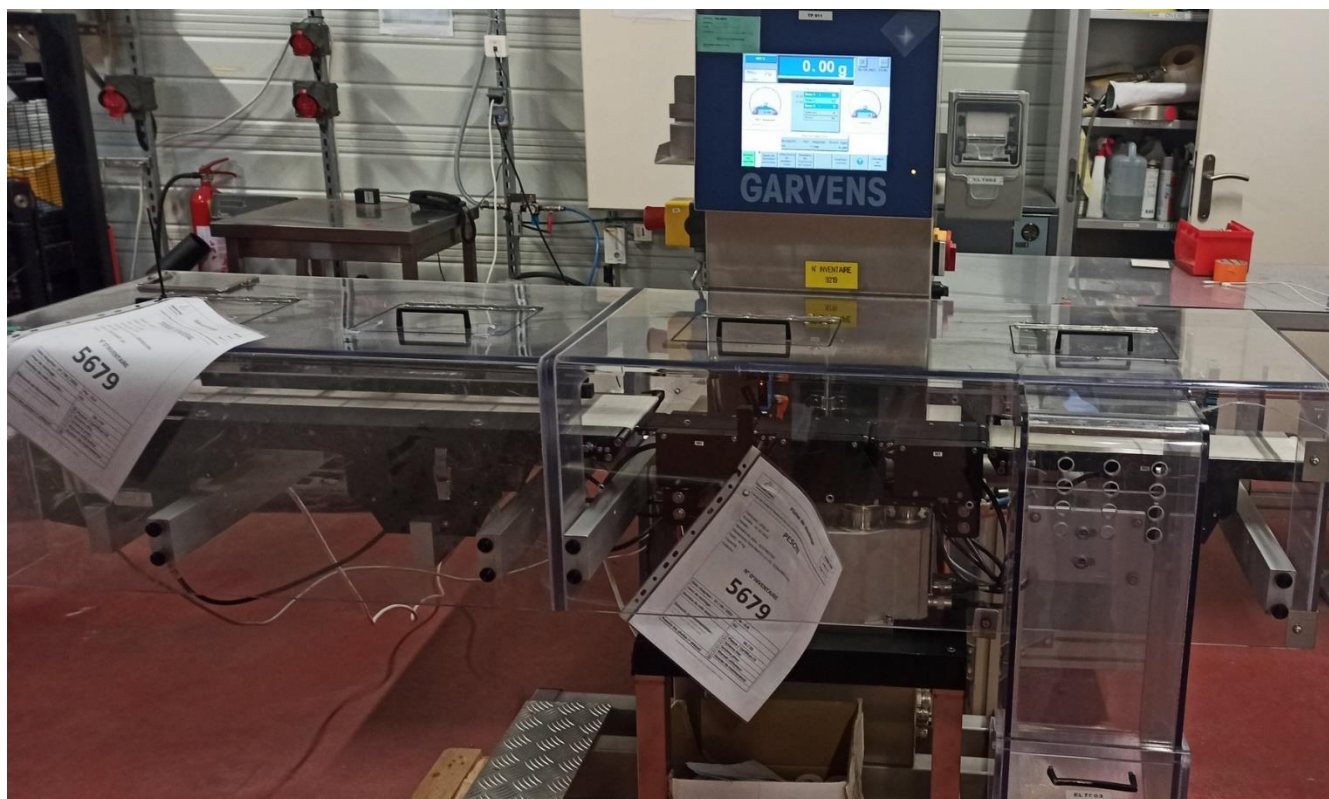
	Fiche machine n°	<h1>Trieuse pondérale</h1>	FRM-007
	5679		Indice A
	Indice A		Page 1 / 15

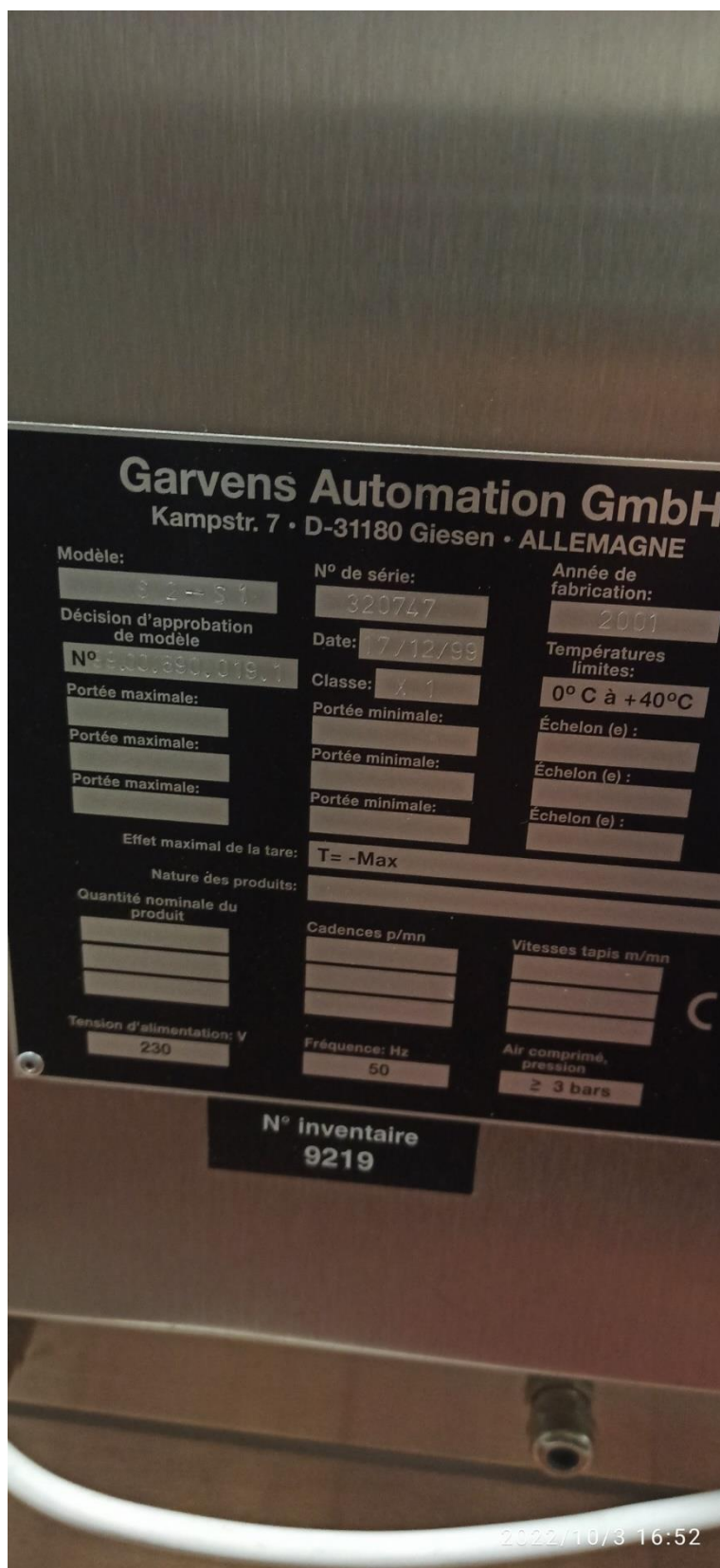
Trieuse pondérale

Fabricant : Garvens
 Modèle : S2-S1
 Année : 2001
 Numéro de série : 320747
 Classe : X1
 Charge max cellule de pesée : 100 g
 Largeur bande : 150 mm
 Alimentation : 230 V / 50 Hz / 3 bar
 Dimensions hors-tout (l x p x h) : 1800 x 900 x 1400 mm
 Documentation technique : présente
 Incoterm : EXW

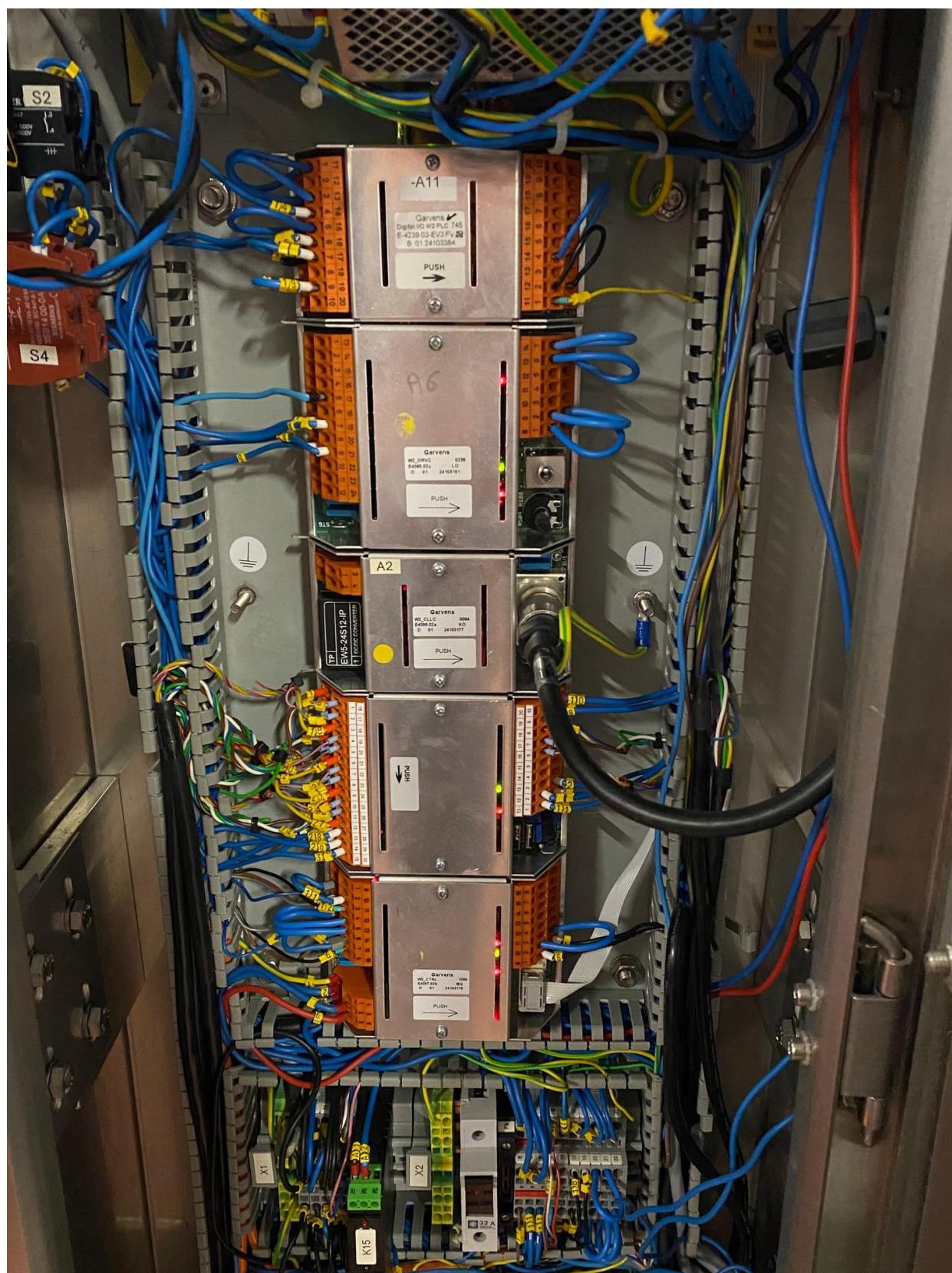
Checkweigher

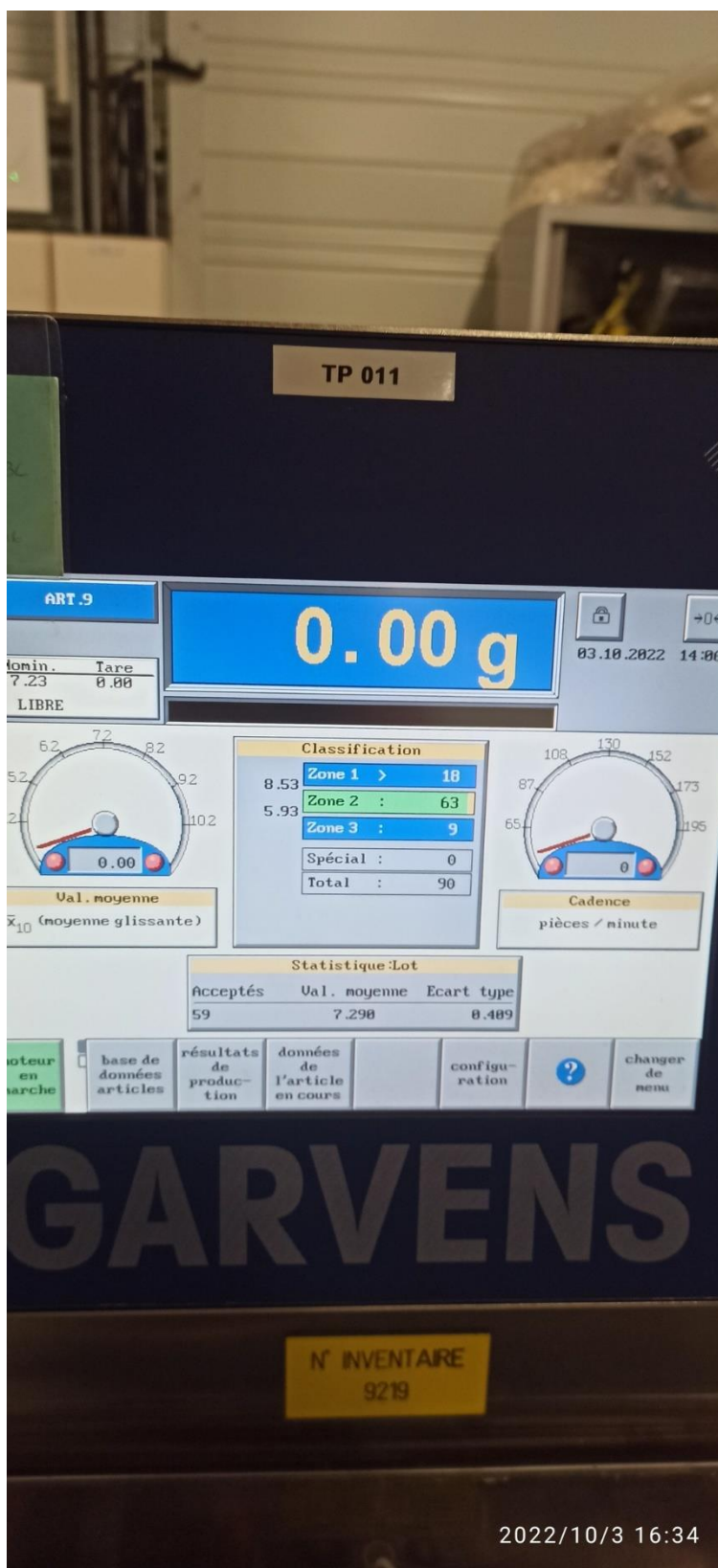
*Manufacturer: Garvens
 Model: S2-S1
 Year: 2001
 Serial number: 320747
 Class: X1
 Weighing cell's max load: 100 g
 Belt's width: 150 mm
 Power supply: 230 V / 50 Hz / 3 bar
 Overall dimensions (l x d x h): 1800 x 900 x 1400 mm
 Technical documentation: available
 Incoterm: EXW*













Ingenneo
used equipment

Fiche machine n°

5679

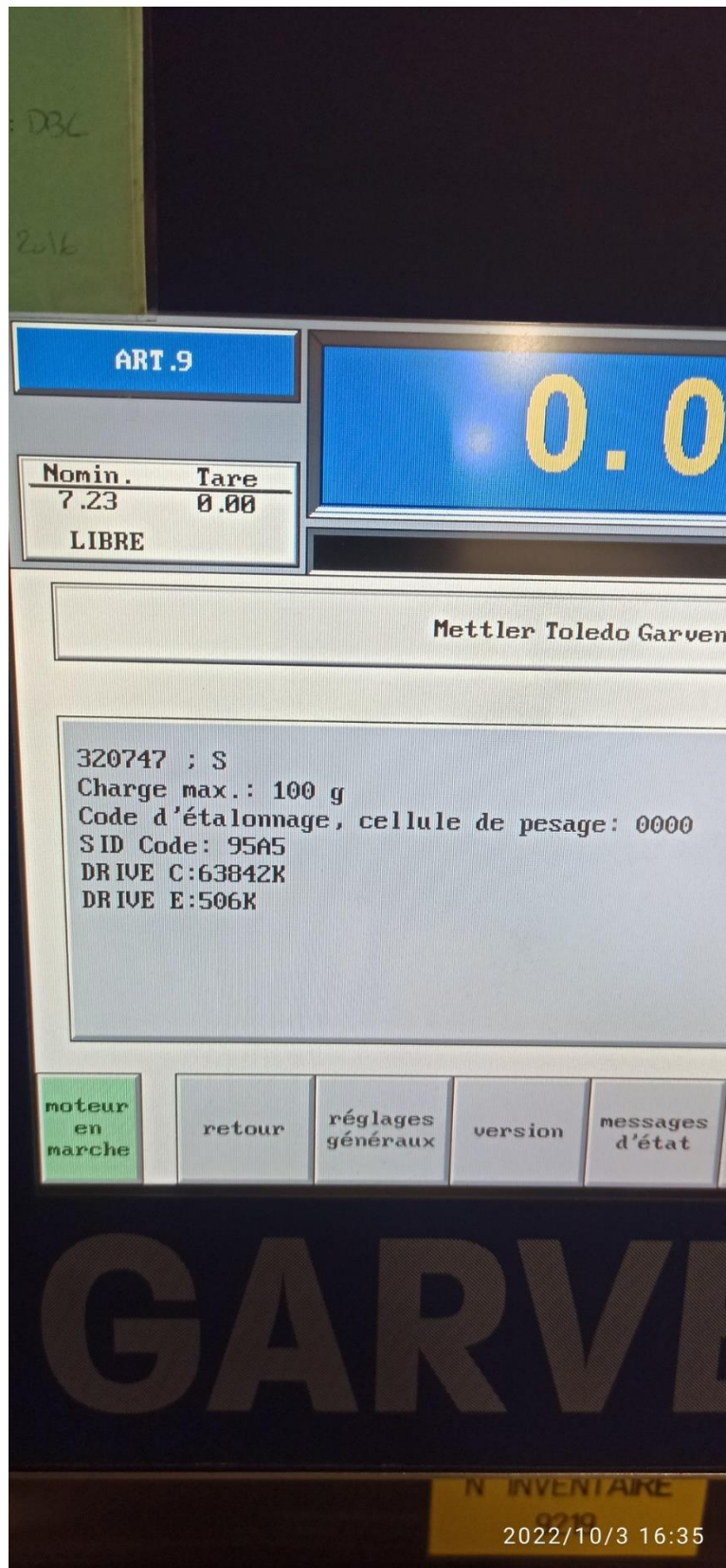
Indice A

Trieuse pondérale

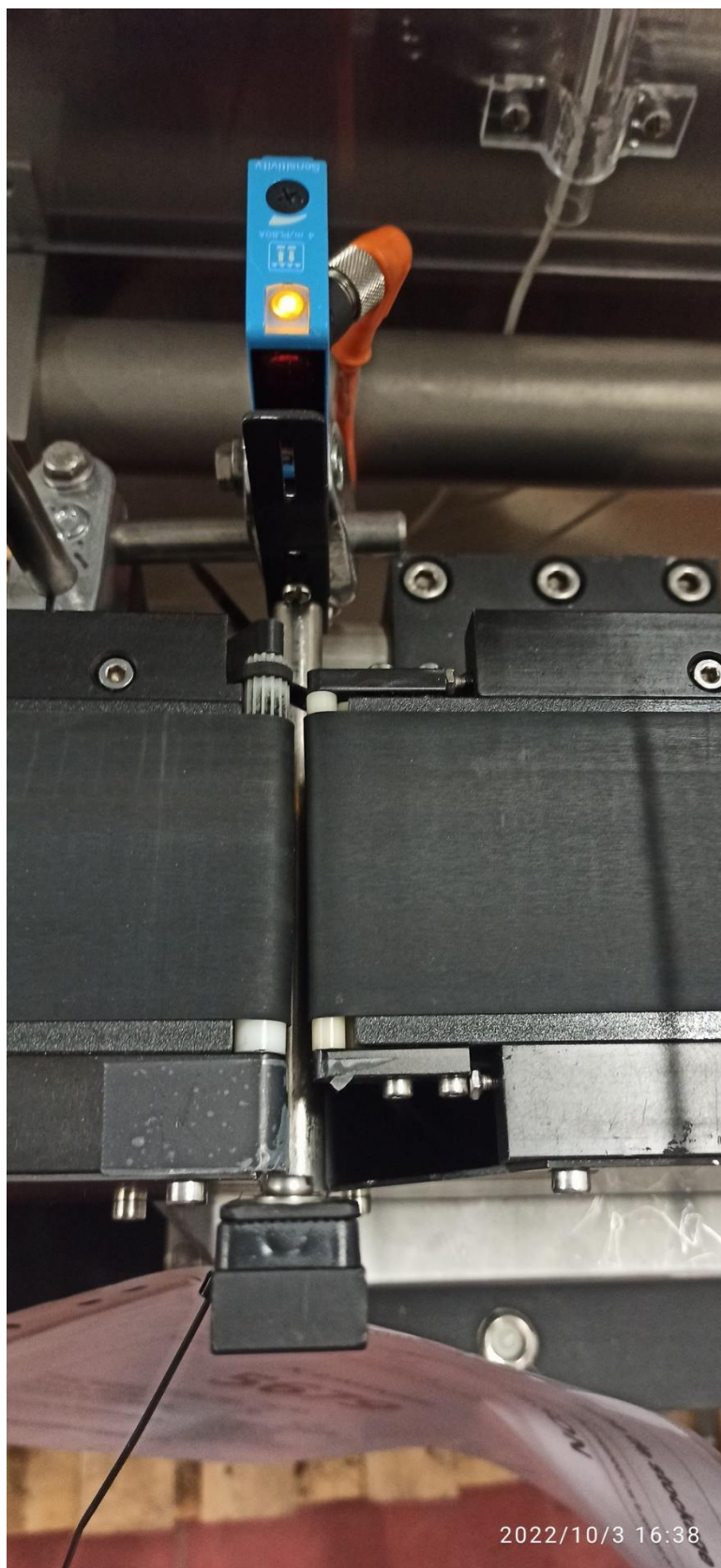
FRM-007

Indice A

Page 7 /
15

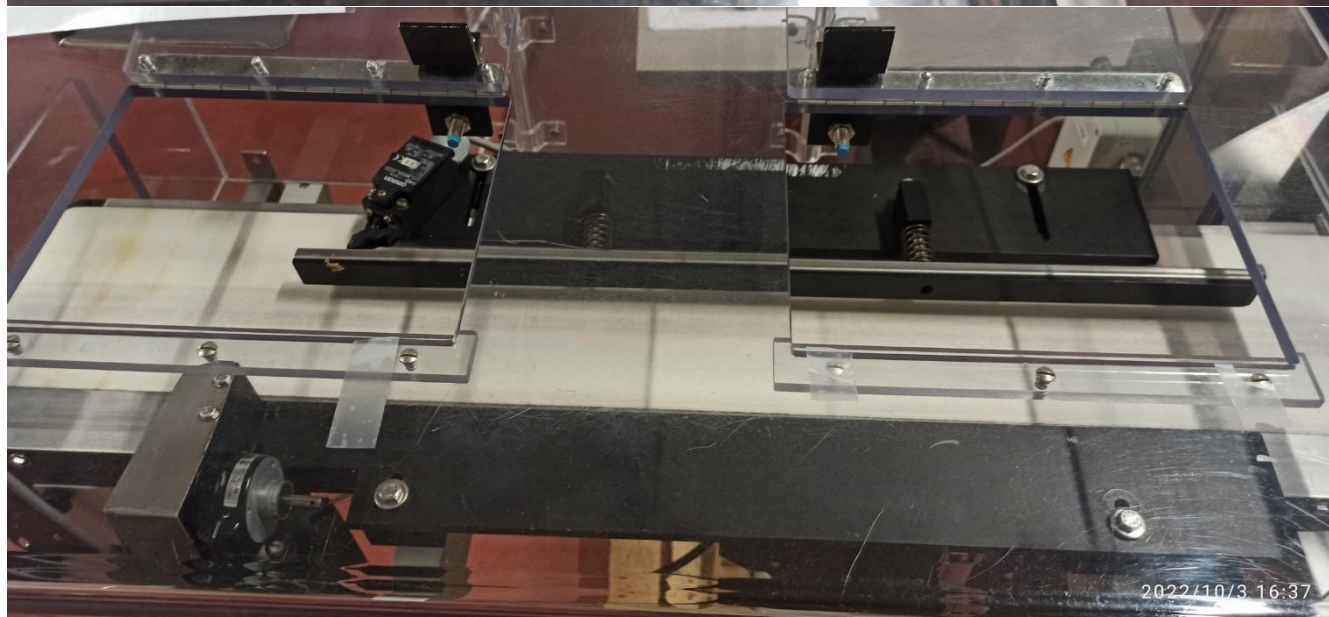
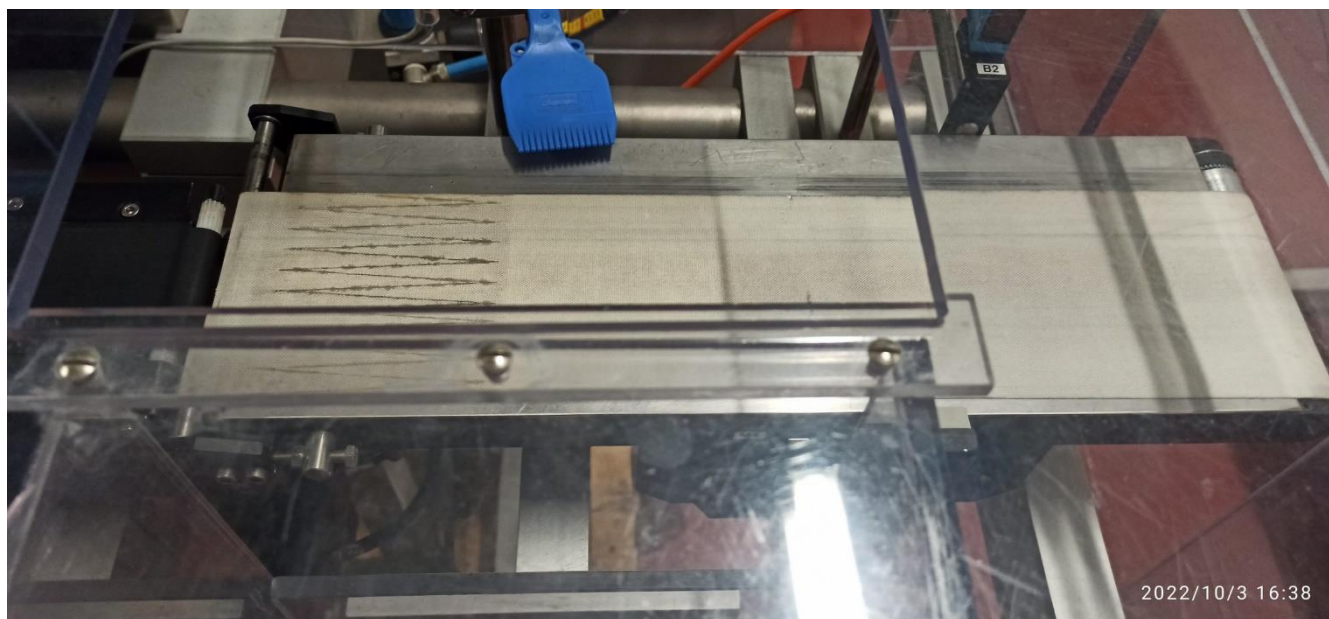








Trieuse pondérale

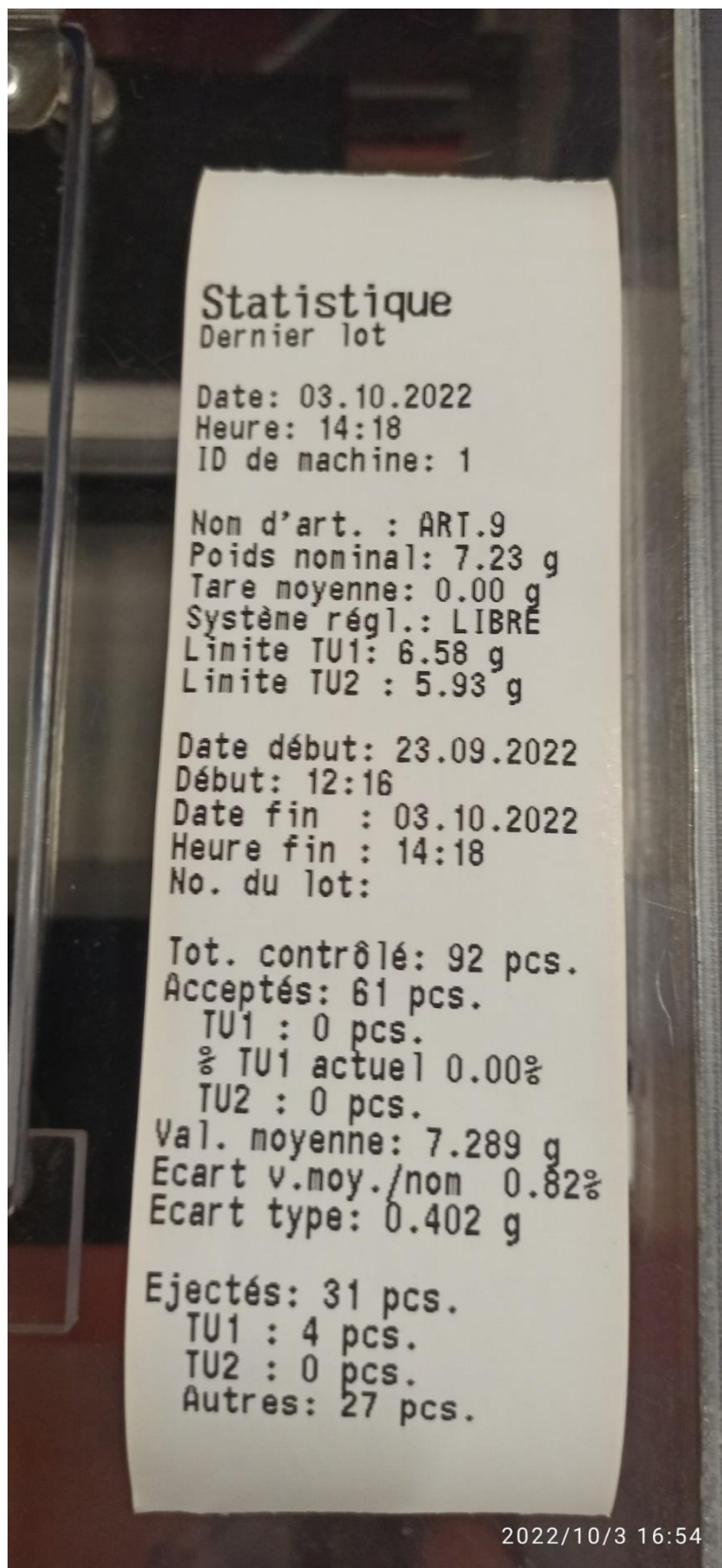


Trieuse pondérale



Trieuse pondérale





Trieuse pondérale

