

Fardeleuse

Fabricant : IMA BFB

Modèle : MS 500 A

Année : 2001

Numéro de série : 4532

Utilisation : groupage d'étuis

Formats :

	A	B	C	D	E	F	H
Min	15	12	50	60	30	50	50
Max	330	100	300	330	200	300	500

Cadence max : 30 min⁻¹

Moteur four T500 : SEIPEE A71B4, vitesse : 1370-1700 tours/ min

Fardeleuse sur roulettes

Dimensions hors-tout L x l x h) : environ 2950 x 1300 x 1900 mm

Pression : 6 bar, 160NI/min

Puissance : 3x400V + T, 50Hz, 15.5kW

Conforme CE

Documentation : Présente

Shrinkwrapper

Manufacturer: IMA BFB

Model: MS 500 A

Year: 2001

Serial number: 4532

Use: bundling cartons

Formats:

	A	B	C	D	E	F	H
<i>Min</i>	15	12	50	60	30	50	50
<i>Max</i>	330	100	300	330	200	300	500

Max cadence: 30 min⁻¹

Motor of T500 oven: SEIPEE A71B4, speed: 1370-1700 RPM

Shrinkwrapper on wheel

Overall dimensions (l x d x h): approximately 2950 x 1300 x 1900 mm

Pressure: 6 bar, 160NI/min

Power: 3x400V + T, 50Hz, 15.5kW

EC compliant

Documentation: available

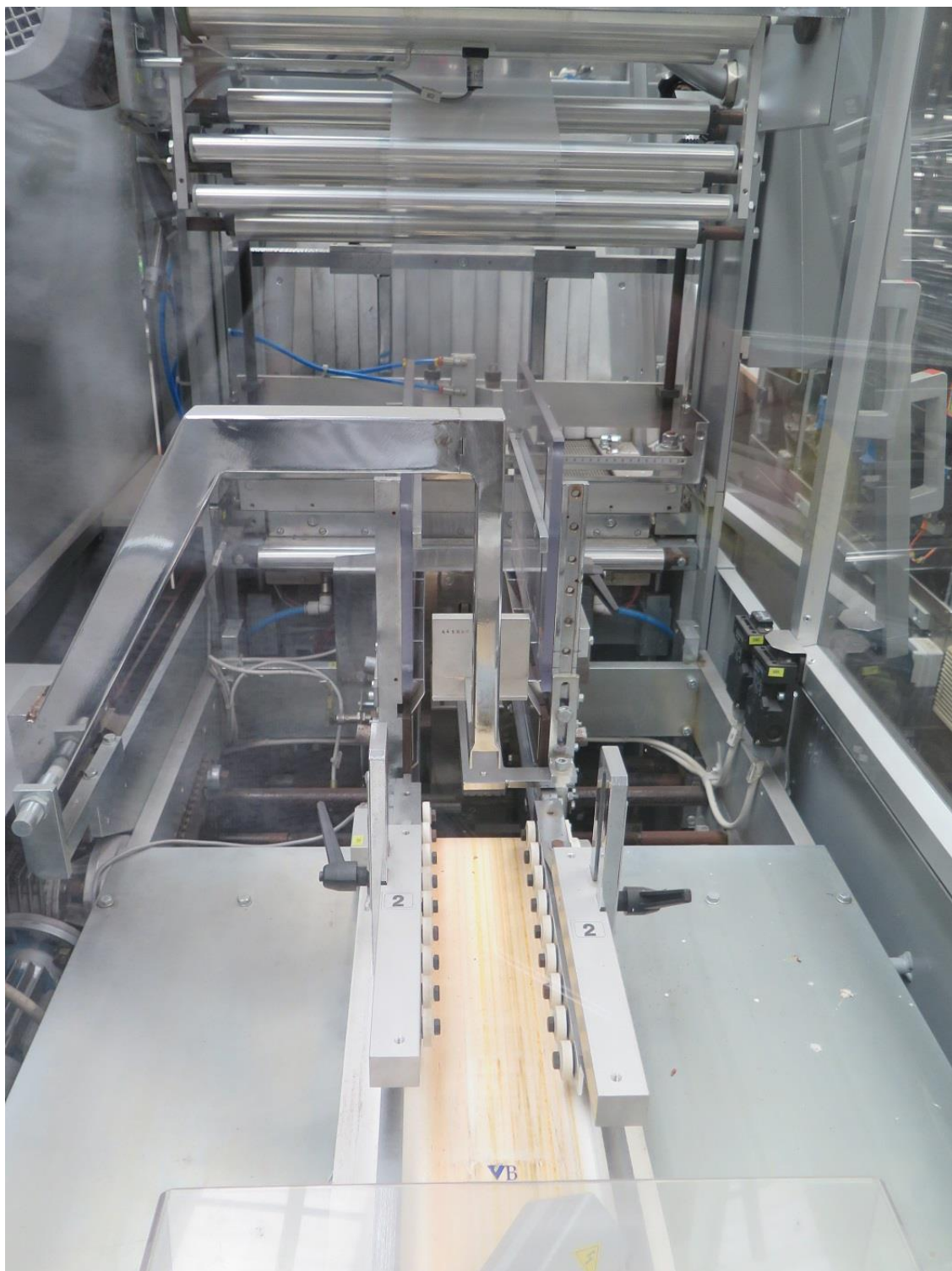
FARDELEUSE



FARDELEUSE



FARDELEUSE





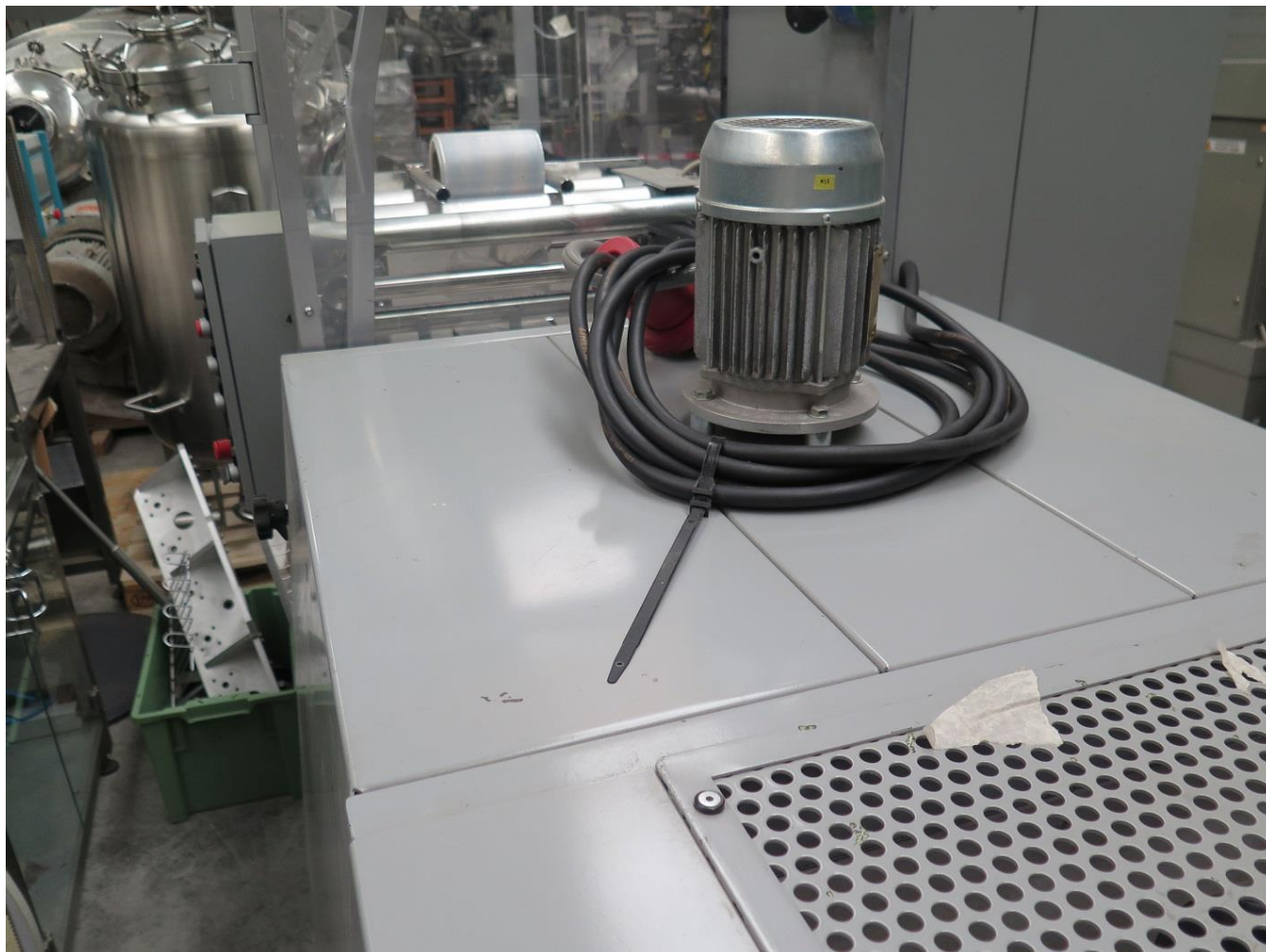
FARDELEUSE

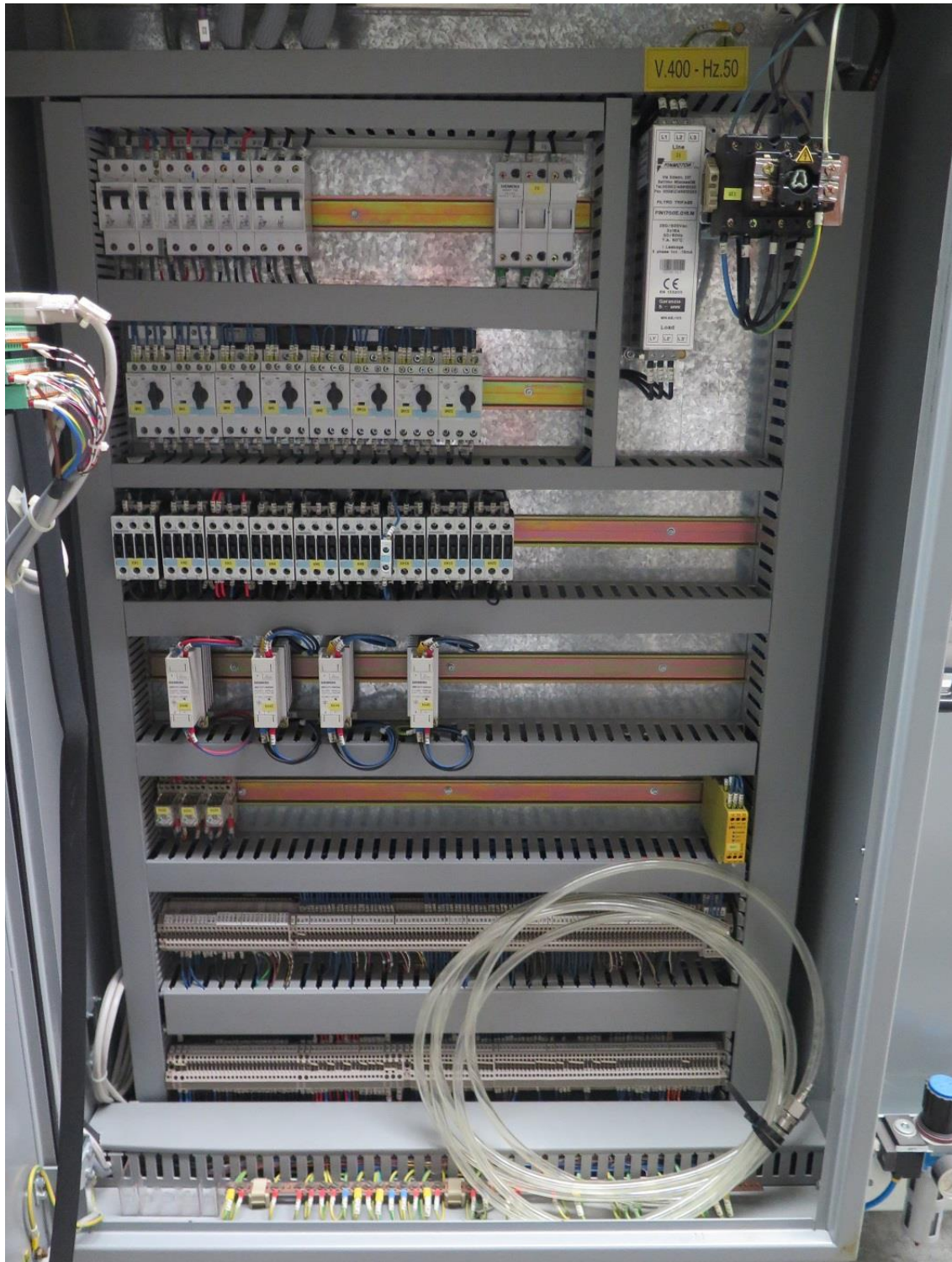


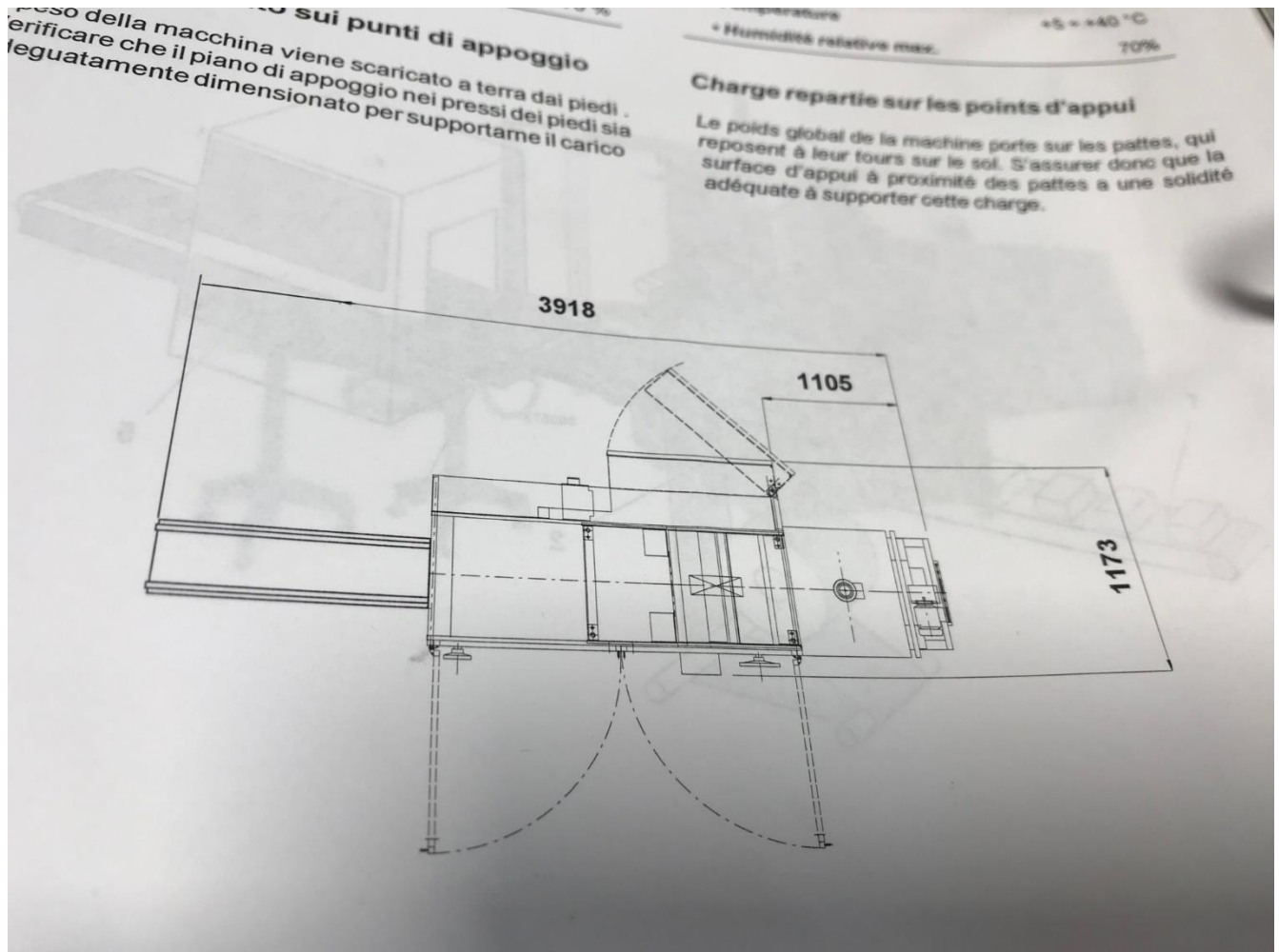
FARDELEUSE



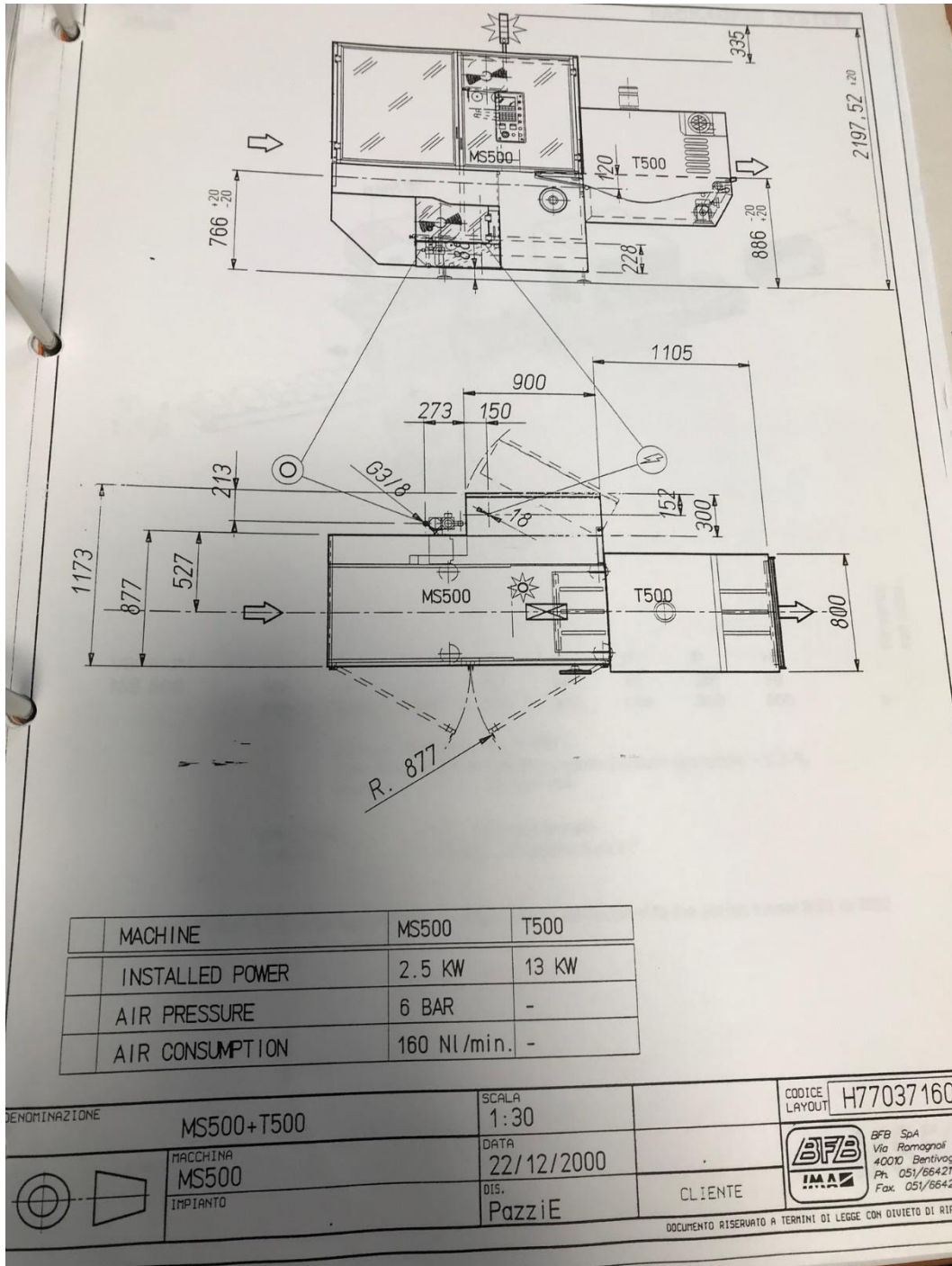
FARDELEUSE



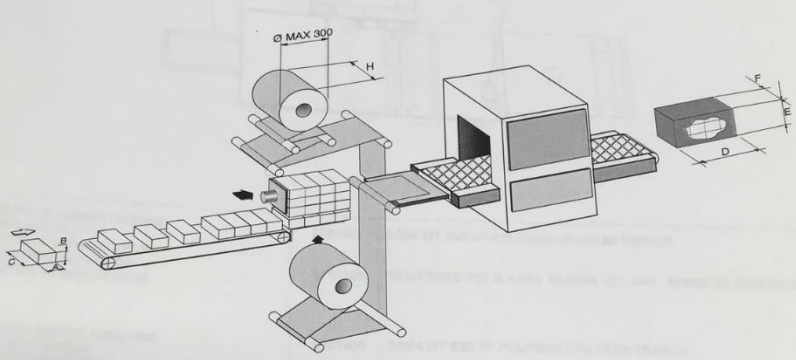




FARDELEUSE



PACKAGING SYSTEM



VERSION	A	B	C	D	E	F	H	Remarks:
MS 500	Min. 15	12	50*	60	30	50*	50	see point...
	Max. 330	100	300	330	200	300	500	a

a Special version E max. = 280
 * Con Filo Fisso lato operatore e lato opposto operatore + C.F.R.
 Cmin.=70 Cmax.=185

BANDING H = F - 30 (approximate)
 SHRINK H = 0.66E + F (approximate)*

*For this package the MS 500 machine has to be coupled to the shrink tunnel M21 or M32

mod.UTM del 13/07/98 MS500